



KINGSTON ROAD

JACKSON-STOPS 

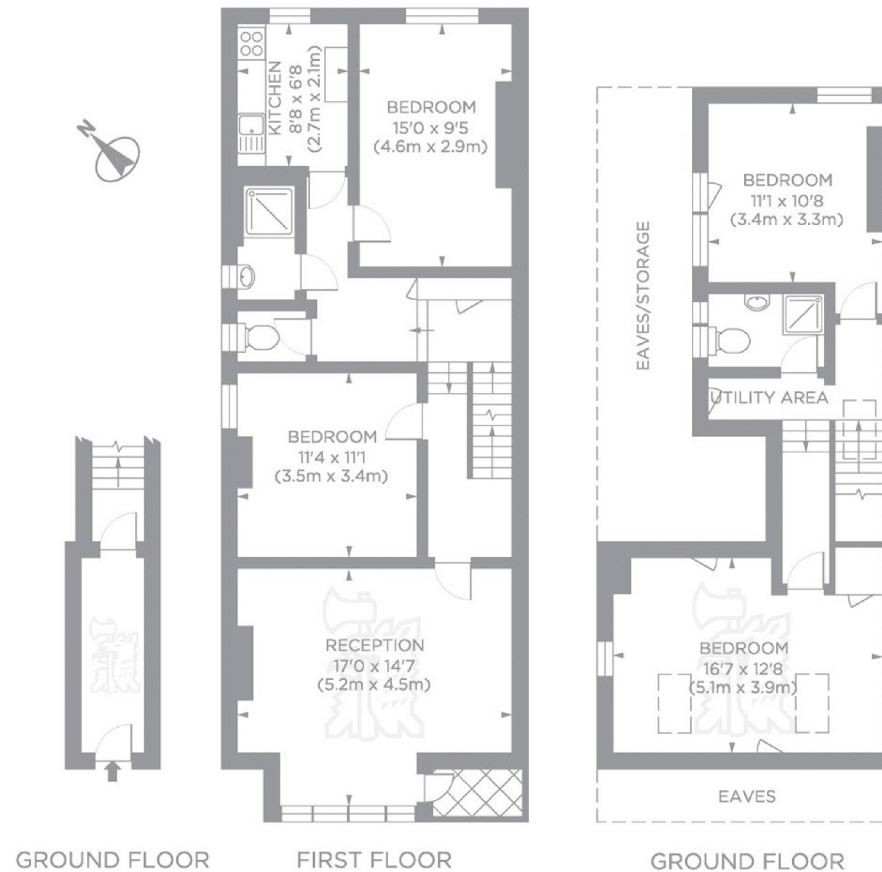
KINGSTON ROAD, , TW11

ASKING PRICE: £2,800 PCM

Ideal for students or sharers a well-proportioned split level maisonette ideally located for local shops and 0.7 miles from Teddington Station. With accommodation spread over three floors comprising of four double bedrooms, two bathrooms, reception room, kitchen and off street parking.

KEY FEATURES

- Split Level
- Four Double Bedrooms
- 1.6 miles to St Marys University
- Close to Station
- Two Bathrooms
- Plenty of Storage



Kingston Road TW11
Gross internal area 1313sq ft/122sq metres
©photosandfloorplans.com

Energy Rating: . We aim to make our particulars both accurate and reliable. However they are not guaranteed; nor do they form part of an offer or contract. If you require clarification on any points then please contact us, especially if you are travelling some distance to view. Please note that appliances and heating systems have not been tested and therefore no warranties can be given as to their good working order.

ASKING PRICE: £2,800 PCM

TEDDINGTON

020 8943 9955

teddington@jackson-stops.co.uk

jackson-stops.co.uk

JACKSON-STOPS 