



**WATER LANE**  
TWICKENHAM

**JACKSON-STOPS** 

## WATER LANE, TWICKENHAM, TW1

ASKING PRICE: £725,000

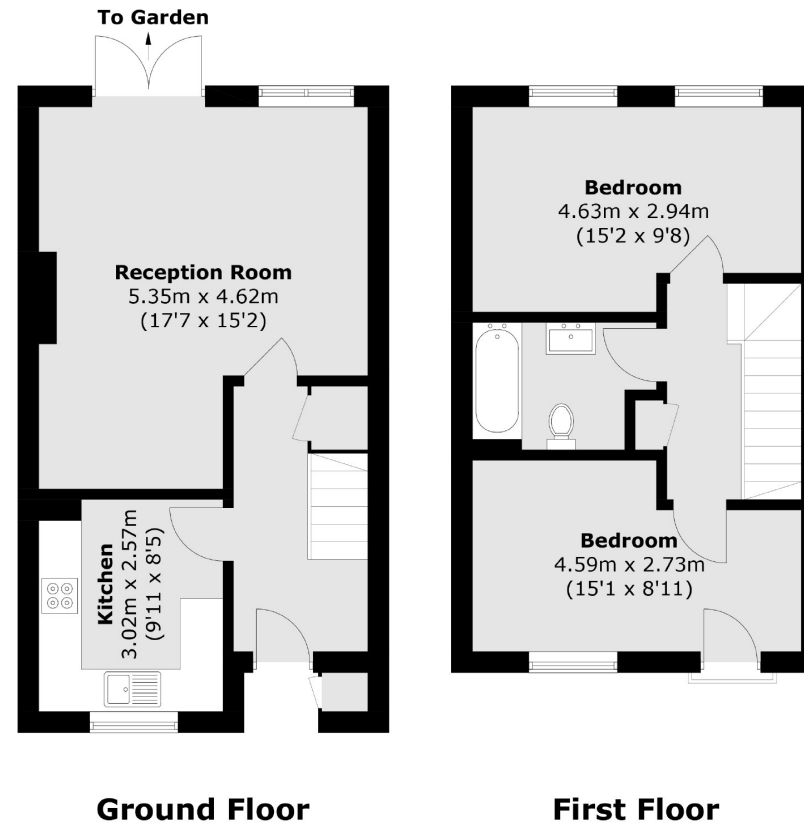
This modern, two bedroom home is situated in central Twickenham, moments from the River Thames and Twickenham Train Station. The property offers just over 800 Sq. ft of living space, set over two floors and is in very good condition throughout with the added benefit of an external storage cupboard to the front of the property.

Located in Twickenham town centre close to the iconic Church Street, River Thames, Jubilee gardens, a number of popular public houses, local transport links and Twickenham mainline station with direct links to London Waterloo.

### KEY FEATURES

- Central Twickenham
- Moments From The River
- Two Double Bedrooms
- Modern Condition Throughout
- Private Enclosed Garden
- Close To Twickenham Station

Energy Rating: . We aim to make our particulars both accurate and reliable. However they are not guaranteed; nor do they form part of an offer or contract. If you require clarification on any points then please contact us, especially if you are travelling some distance to view. Please note that appliances and heating systems have not been tested and therefore no warranties can be given as to their good working order.



Total area (approx.): 74.3 sq. m (799.7 sq. ft)  
External Storage: 0.3 sq. m (3.2 sq. ft)

ASKING PRICE: £725,000

TEDDINGTON

020 8943 9777

teddingtonsales@jackson-stops.com

jackson-stops.co.uk

JACKSON-STOPS 