



SHEEN COURT
RICHMOND

JACKSON-STOPS 

SHEEN COURT, RICHMOND, TW10

ASKING PRICE: £525,000

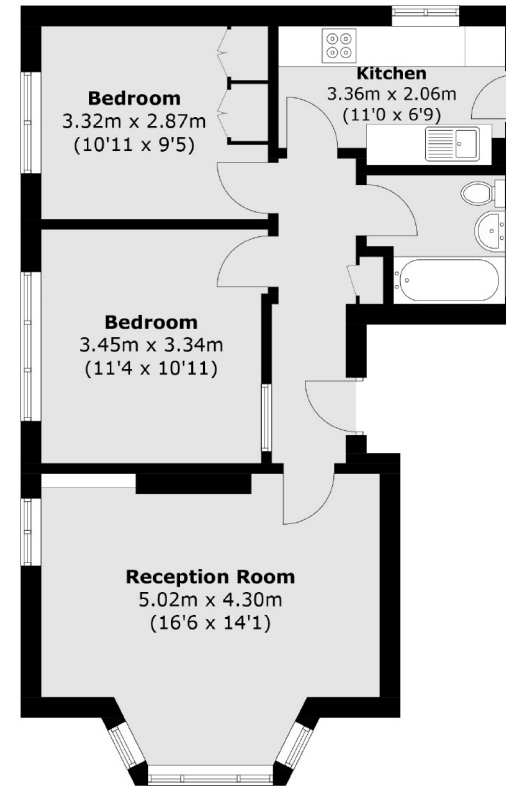
A bright and spacious two bedroom mansion block apartment located on the first floor of the popular Sheen Court development. The property is offered with a share of freehold, benefits from low service charge costs and no forward chain. The property also benefits from the hot water and heating included in the service charge.

Sheen Court is a well maintained private sought after residential development set within extensive communal grounds. Richmond and North Sheen stations offer tube or rail services into Central London via the District Line, South West Trains and London Overground.

KEY FEATURES

- Two Double Bedrooms
- Spacious Reception Room
- Modern Fitted Kitchen
- Share of freehold
- No Forward Chain
- Communal Gardens

Energy Rating: . We aim to make our particulars both accurate and reliable. However they are not guaranteed; nor do they form part of an offer or contract. If you require clarification on any points then please contact us, especially if you are travelling some distance to view. Please note that appliances and heating systems have not been tested and therefore no warranties can be given as to their good working order.



Total area (approx.): 58.4 sq. m (628.6 sq. ft)

ASKING PRICE: £525,000

TEDDINGTON

020 8943 9777

teddington@jackson-stops.co.uk

jackson-stops.co.uk

JACKSON-STOPS 