



UDNEY PARK ROAD
TEDDINGTON

JACKSON-STOPS 

UDNEY PARK ROAD TEDDINGTON, TW11

ASKING PRICE: £574,950

Fullerton Court presents a rare opportunity to secure a home tailored to the needs and desires of those aged 65 and over. Residents can savor their independence while simultaneously enjoying an enhanced quality of life through an array of on-site support services. The development provides a delightful restaurant where residents can enjoy daily lunches, creating a vibrant social hub within the community.

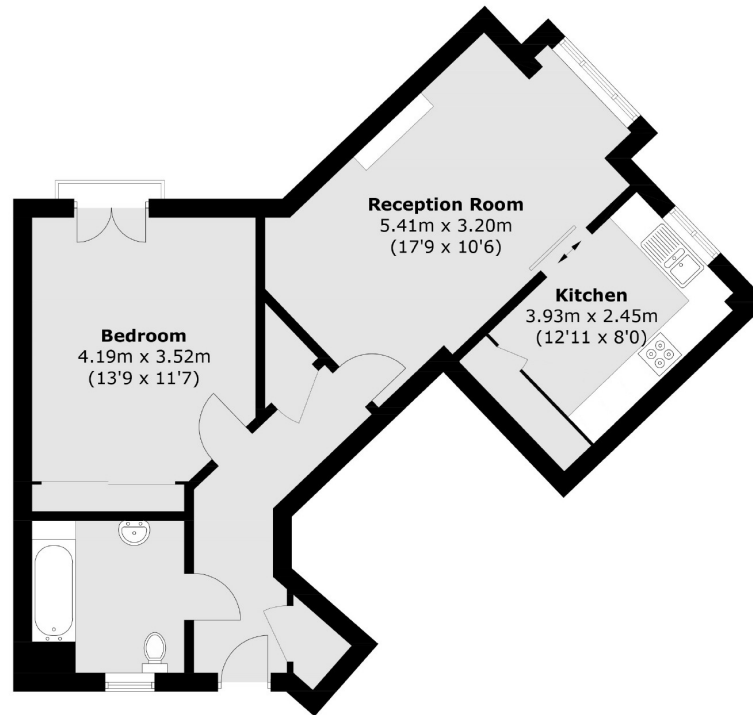
Udney Park Road is located off Teddington High Street giving you easy access to the amenities of Teddington High Street such as pubs, restaurants, cafés and supermarkets. The property is also located very close to bus stops on Teddington High Street.

KEY FEATURES

- For Persons Aged Over 65
- 24 Hour On-Site Management
- Parking For Residents & Visitors
- 1st Floor Apartment







First Floor

Total area (approx.): 62.1 sq. m (668.4 sq. ft)

Energy Rating: . We aim to make our particulars both accurate and reliable. However they are not guaranteed; nor do they form part of an offer or contract. If you require clarification on any points then please contact us, especially if you are travelling some distance to view. Please note that appliances and heating systems have not been tested and therefore no warranties can be given as to their good working order.

36 HIGH STREET, TEDDINGTON, LONDON, TW11 8EW

020 8943 9777

teddington@jackson-stops.co.uk

jackson-stops.co.uk

JACKSON-STOPS 