



**YORK ROAD**  
TEDDINGTON

**JACKSON-STOPS** 

## YORK ROAD, TEDDINGTON, TW11

ASKING PRICE: £675,000

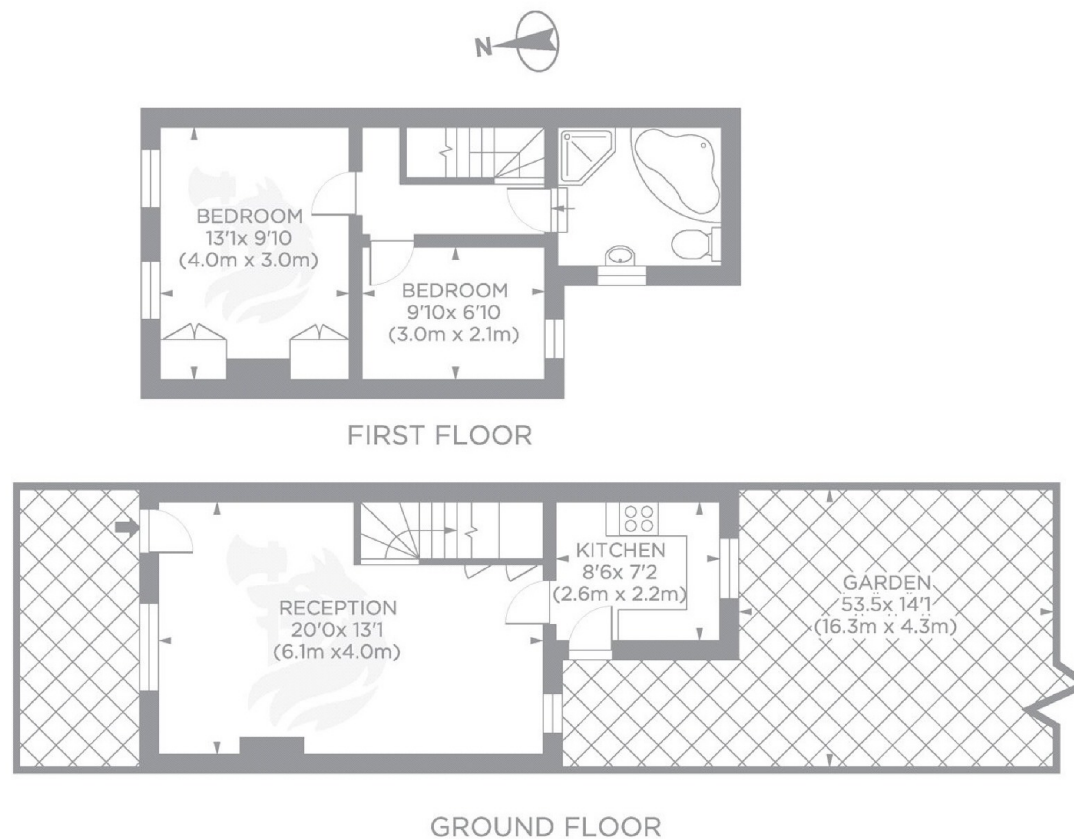
OFFERS IN EXCESS OF £675,000. A truly delightful two double bedroom Victorian cottage, situated on a popular residential street close to local amenities and highly regarded schools. The house offers almost 700 sq.ft of living space over two floors and is in good condition through out.

York Road is a quiet, one-way road with a wonderful community feel. It runs between Stanley Road and Elmtree Road. The house is just 0.5 miles from Fulwell Station, bus routes run to the end of the road, and local shops are within a few minutes walk. The house is close to several reputable schools, with St Mary and St Peters CoE School, Stanley Primary School and Waldegrave School nearby.

### KEY FEATURES

- Victorian Cottage
- Contemporary Interior
- Private Garden
- Upstairs bathroom
- Open plan living area
- Freehold

Energy Rating: . We aim to make our particulars both accurate and reliable. However they are not guaranteed; nor do they form part of an offer or contract. If you require clarification on any points then please contact us, especially if you are travelling some distance to view. Please note that appliances and heating systems have not been tested and therefore no warranties can be given as to their good working order.



York Road TW11

Approximate gross internal area 656sq ft/61sq metres

For Illustration Purposes Only - Not To Scale.

@photosandfloorplans.com

36 HIGH STREET, TEDDINGTON, LONDON, TW11 8EW

020 8943 9777

teddington@jackson-stops.co.uk

jackson-stops.co.uk

JACKSON-STOPS 