



HEATH ROAD  
TWICKENHAM

JACKSON-STOPS 

## HEATH ROAD, TWICKENHAM, TW1

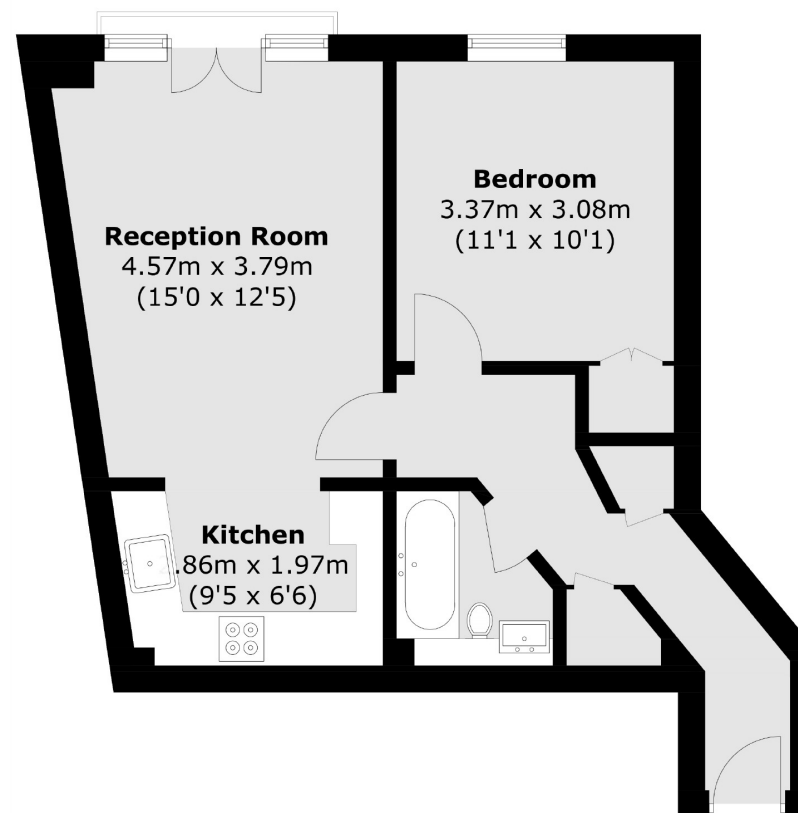
ASKING PRICE: £132,000

SHARED OWNERSHIP AT 40%. This well located one bedroom apartment is offered to the market with no onward chain. The property has been modernised throughout 6 years ago and is in excellent condition and ready to move in to. The property benefits from a modern kitchen and bathroom, gas central heating and double glazed through out. The property has a great amount of storage and offers 501 square feet of living space. You are able to buy 100% of this property for £330,000.

Bradley House is just a 13 minutes walk from Twickenham Station and is also on the door steps of all the local shops restaurants and pubs that Twickenham has to offer. The River Thames is less than a 10 minutes walk and there is a bus stop less than 1 minute from the apartment offering easy links to Richmond Station.

### KEY FEATURES

- First Floor Flat
- Long Lease
- Low Service Charge
- Close To Amenities
- Modern Spec
- Juliette Balcony



Total area (approx.): 46.6 sq. m ( 501.6 sq. ft)

Energy Rating: . We aim to make our particulars both accurate and reliable. However they are not guaranteed; nor do they form part of an offer or contract. If you require clarification on any points then please contact us, especially if you are travelling some distance to view. Please note that appliances and heating systems have not been tested and therefore no warranties can be given as to their good working order.

ASKING PRICE: £132,000

TEDDINGTON

020 8943 9777

teddingtonsales@jackson-stops.com

jackson-stops.co.uk

JACKSON-STOPS 