



CHURCH ROAD
RICHMOND

JACKSON-STOPS 

CHURCH ROAD, RICHMOND, TW10

ASKING PRICE: £6,000 PCM

Within moments of Richmond Park is this wonderful 5-bedroom family home. Benefitting from double garage, large driveway and multiple reception rooms, the property boasts ample space in an idyllic location.

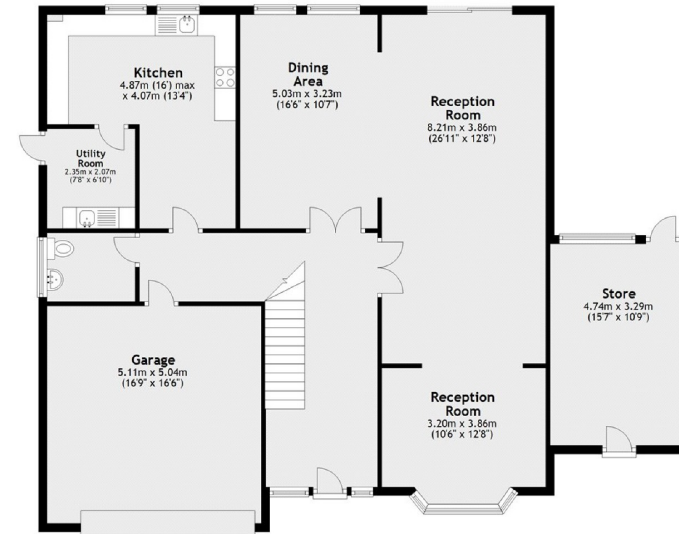
Ham is a sought after location between Richmond and Kingston. Both Richmond Park and the River Thames are close by perfect for young families and those with an interest in the outdoors.

KEY FEATURES

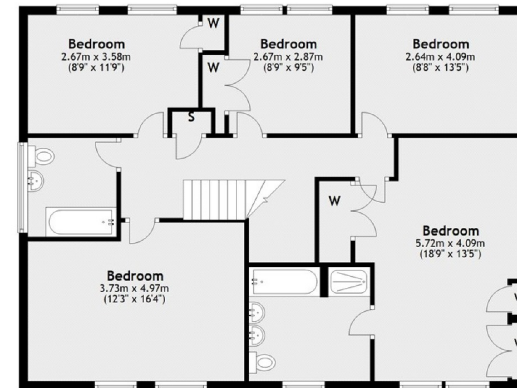
- Double garage
- Large private garden
- 5 double bedrooms
- Multiple reception rooms
- Modern Eat-in Kitchen
- Ham Common

Energy Rating: D. We aim to make our particulars both accurate and reliable. However they are not guaranteed; nor do they form part of an offer or contract. If you require clarification on any points then please contact us, especially if you are travelling some distance to view. Please note that appliances and heating systems have not been tested and therefore no warranties can be given as to their good working order.

Ground Floor



First Floor



Main area: Approx. 206.9 sq. metres (2226.5 sq. feet)
Plus garages, approx. 25.8 sq. metres (277.3 sq. feet)
Plus outbuildings, approx. 15.6 sq. metres (167.9 sq. feet)

3 LICHFIELD TERRACE, SHEEN ROAD, RICHMOND, TW9 1AS

020 8940 0066

richmond@jackson-stops.co.uk

jackson-stops.co.uk

JACKSON-STOPS 