

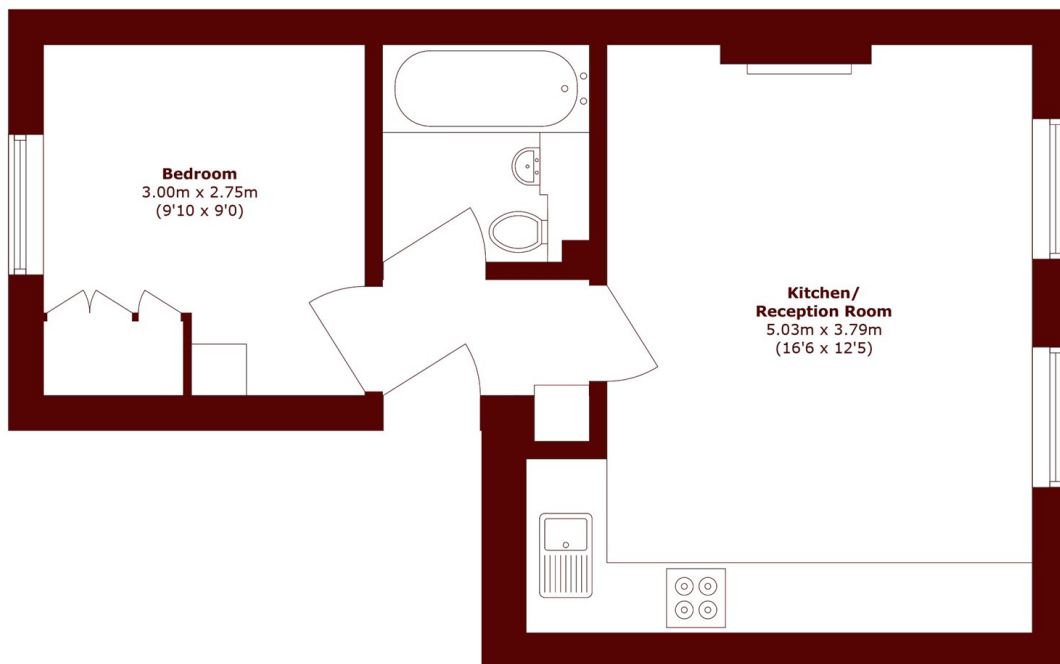


Clifton Road, W9

£540,000



- Period building
- One bedroom apartment
- Built in storage
- Well presented
- Second floor
- Approx 369sq ft



Total area (approx.): 34.3 sq. m (369.2 sq. ft)

Marsh & Parsons Little Venice

35 Maida Vale, Maida Vale,
W9 1TP
020 7993 3050