



Mildrose Court, NW6

£780,000

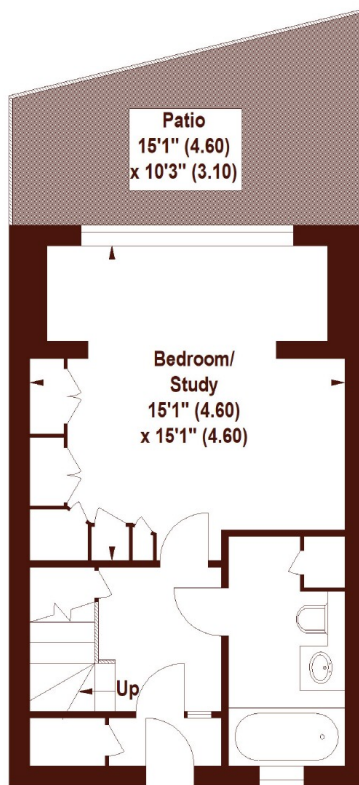


- Two double bedrooms
- Private patio garden
- Off-street parking

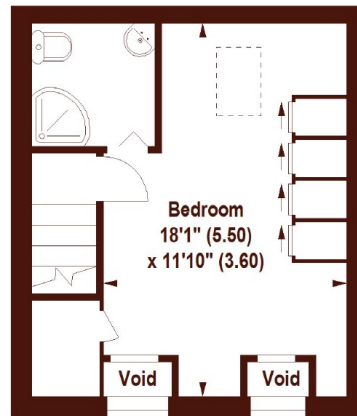
Mildrose Court, Malvern Mews, NW6

APPROX. GROSS INTERNAL FLOOR AREA 974 SQFT / 90.48 SQM

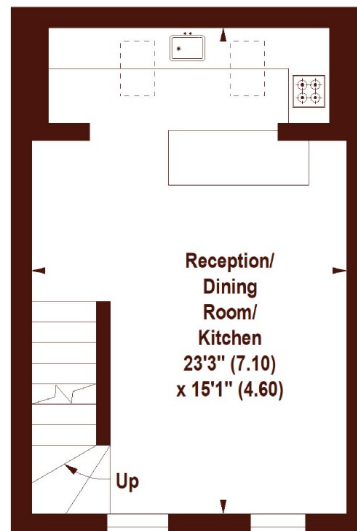
Key :
CH - Ceiling Height



GROUND FLOOR



SECOND FLOOR



FIRST FLOOR

Not to scale, for guidance only and must not be relied upon as a statement of fact.
All measurements and areas are approximate only

Marsh & Parsons Little Venice

35 Maida Vale, Maida Vale,
W9 1TP
020 7993 3050