



Apartment 2, Manor Lodge,
Ruddington, NG11 6DU

Apartment 2, Manor Lodge, Ruddington, NG11 6DU

Welcome to Manor Lodge - 'Churchill Living' in the picturesque Manor Park, Ruddington!

This charming apartment boasts a cosy reception room, perfect for relaxing or entertaining guests. With one spacious bedroom and a well-appointed bathroom, this property offers comfort and convenience in one package. This Apartment to include Curtains, carpets and Light fittings, with solar panels on the roof.

Nestled in a sought-after location, this apartment is ideal for those looking for a peaceful retreat while still being close to local amenities. Whether you're a first-time buyer, downsizing, or seeking an investment opportunity, Manor Lodge has something for everyone.

Don't miss the chance to make this apartment your own and enjoy the tranquility of Manor Park living. Contact us today to arrange a viewing and take the first step towards owning a piece of this delightful neighbourhood!

CALL TO ARRANGE AN APPOINTMENT!!

Asking Price £249,950





Manor Lodge

Manor Lodge comprises just 43 self contained, one and two bedroom apartments.

The development also features communal gardens and parking areas, a Coffee Bar and Owners' Lounge.

OUTSIDE

The property enjoys access to the communal gardens.

Leasehold

Leasehold information is to be made available direct from the Churchill Retirement Living. Appointments to be made with The Lodge to discuss fees including service charge.

Service charge costs for each individual properties are available from the Lodge Manager. Water rates are included in the service charges together with all electrics used in the communal area.

Additional as with all leasehold apartments, they are subject to ground rent. These are reviewed after seven years and are calculated in line with inflation and linked to the Retail price Index.

Council Tax Band

Council Tax Band to be confirmed.

Directions

Manor Lodge can be found off Manor Park, from Wilford Road, Ruddington.

Ruddington

The sought after south Nottinghamshire village of Ruddington is conveniently situated for access to Nottingham City Centre, the QMC and the M1.

The village itself enjoys a wealth of local facilities including excellent restaurants, public houses, shops, a library, schools and the award winning Rushcliffe Country Park.

Referral Arrangement Note

Thomas James Estate Agents always refer sellers (and will offer to refer buyers) to Premier Property Lawyers, Ives & Co, and Curtis & Parkinson for conveyancing services (as above). It is your decision as to whether or not you choose to deal with these conveyancers. Should you decide to use the conveyancers named above, you should know that Thomas James Estate Agents would receive a referral fee of between £120 and £240 including VAT from them, for recommending you to them.

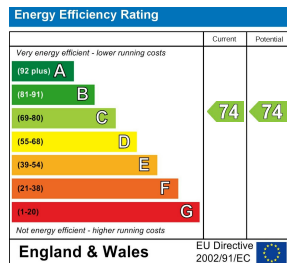


DISCLAIMER NOTES

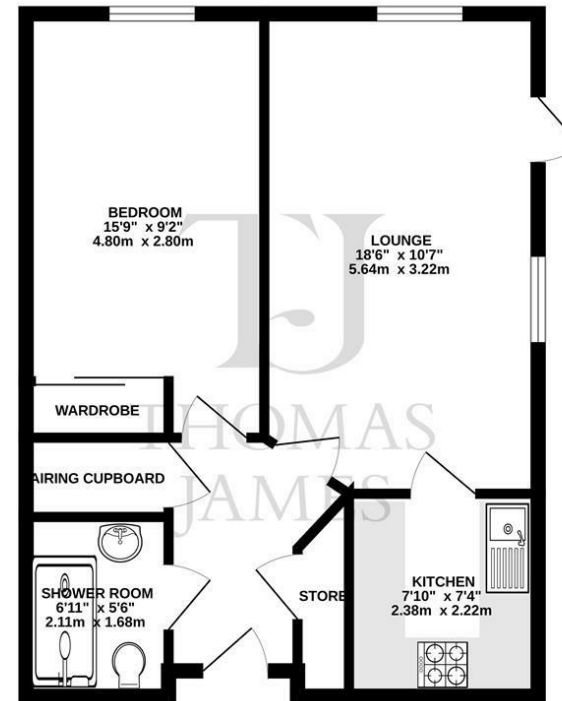
These sales particulars have been prepared by Thomas James Estate Agents on the instruction of the vendor. Services, equipment and fittings mentioned in these particulars have NOT been tested, and as such, no warranties can be given. Prospective purchasers are advised to make their own enquiries regarding such matters. These sales particulars are produced in good faith and are not intended to form part of a contract. Whilst Thomas James Estate Agents have taken care in obtaining internal measurements, they should only be regarded as approximate.

MONEY LAUNDERING

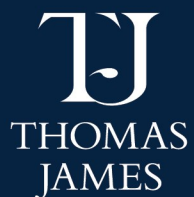
Under the Protecting Against Money Laundering and the Proceeds of Crime Act 2002, Thomas James require any successful purchasers proceeding with a purchase to provide two forms of identification i.e passport or photocard driving license and a recent utility bill. This evidence will be required prior to Thomas James instructing solicitors in the purchase or the sale of a property.



GROUND FLOOR



Whilst every attempt has been made to ensure the accuracy of the floorplan contained here, measurements of doors, windows, rooms and any other items are approximate and no responsibility is taken for any error, omission or mis-statement. This plan is for illustrative purposes only and should be used as such by any prospective purchaser. The services, systems and appliances shown have not been tested and no guarantee as to their operability or efficiency can be given.
Made with Metriplex ©2023



Thomas James Estate Agents
20 High Street, Ruddington,
Nottinghamshire, NG11 6EH

Tel: 0115 984 4660
Email: ruddington@tjea.com
Web: www.tjea.com

Selected as the Best
Independent Agent by the
Relocation Agent Network

These particulars, whilst believed to be accurate are set out as a general outline only for guidance and do not constitute any part of an offer or contract. Intending purchasers should not rely on them as statements of representation of fact, but must satisfy themselves by inspection or otherwise as to their accuracy. No person in this firm's employment has the authority to make or give any representation or warranty in respect of the property.

