



61 Fairway,  
Keyworth, NG12 5DW

# 61 Fairway, Keyworth, NG12 5DW

In need of upgrade throughout, this semi detached home is offered to the market with no upward chain.

The property provides accommodation arranged over two floors including an entrance porch, a lounge, and a kitchen/diner with patio doors opening to the garden on the ground floor, with the first floor landing giving access to three bedrooms, and the family bathroom.

Benefiting from gas central heating and double glazing, the property has gardens to both the front and rear (in need of attention and maintenance), plus a driveway and double garage.

Situated in the highly regarded south Nottinghamshire village of Keyworth, the property is within easy reach of excellent local facilities including shops, schools, churches, a doctors surgery and country park. Main road routes and local transport links gives access to neighbouring villages, and to Nottingham City Centre.

**Guide Price £230,000**





### ACCOMMODATION

The entrance door opens to the entrance porch. From here, a door leads into the lounge.

The lounge has a bay window to the front, an open fireplace, stairs rising to the first floor, and open access to the kitchen/diner.

Fitted with wall and base units, the kitchen/diner has a stainless steel sink and drainer unit with a mixer tap over, space for a tall fridge/freezer, plus a built in oven with a gas hob and extractor hood over. There is a breakfast bar area, a pantry store cupboard, a bay window to the rear, a door into the garage, a timber door opening to the rear, and sliding patio doors opening to the rear garden.

On reaching the first floor, the landing has doors into three bedrooms (one with an over stairs storage cupboard), and the family bathroom, which is fitted with a panelled bath with a shower over, plus a vanity unit incorporating the wash hand basin and wc.

### OUTSIDE

At the front of the property there is a garden, plus a driveway and DOUBLE GARAGE (with timber doors to the front, lighting, and a personnel door into the kitchen/diner).

The rear garden includes a patio seating area, a lawn, and mature trees and plants.

Gardens to both the front and rear are overgrown, and in need of attention.

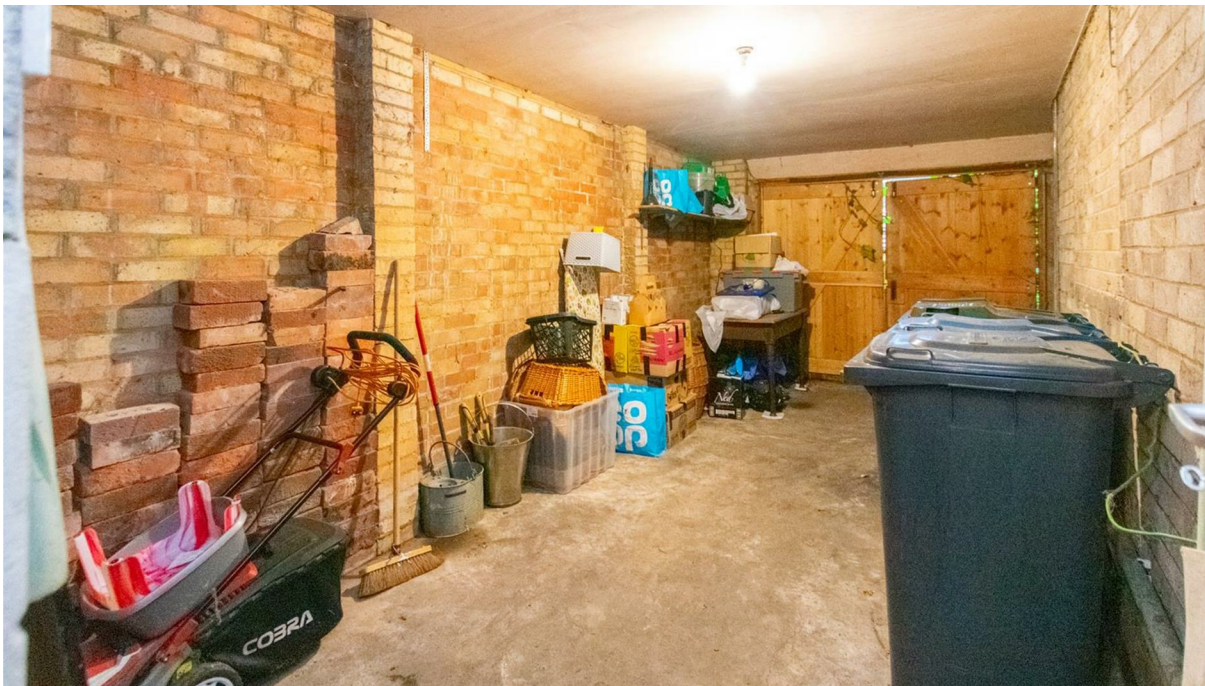
### Council Tax Band

Council Tax Band C. Rushcliffe Borough Council.

Amount Payable 2024/2025 £2,147.80.

### Referral Arrangement Note

Thomas James Estate Agents always refer sellers (and will offer to refer buyers) to Knights PLC, Premier Property Lawyers, Ives & Co, Curtis & Parkinson, Bryan & Armstrong, and Marchants for conveyancing services (as above). It is your decision as to whether or not you choose to deal with these conveyancers. Should you decide to use the conveyancers named above, you should know that Thomas James Estate Agents would receive a referral fee of between £120 and £240 including VAT from them, for recommending you to them.

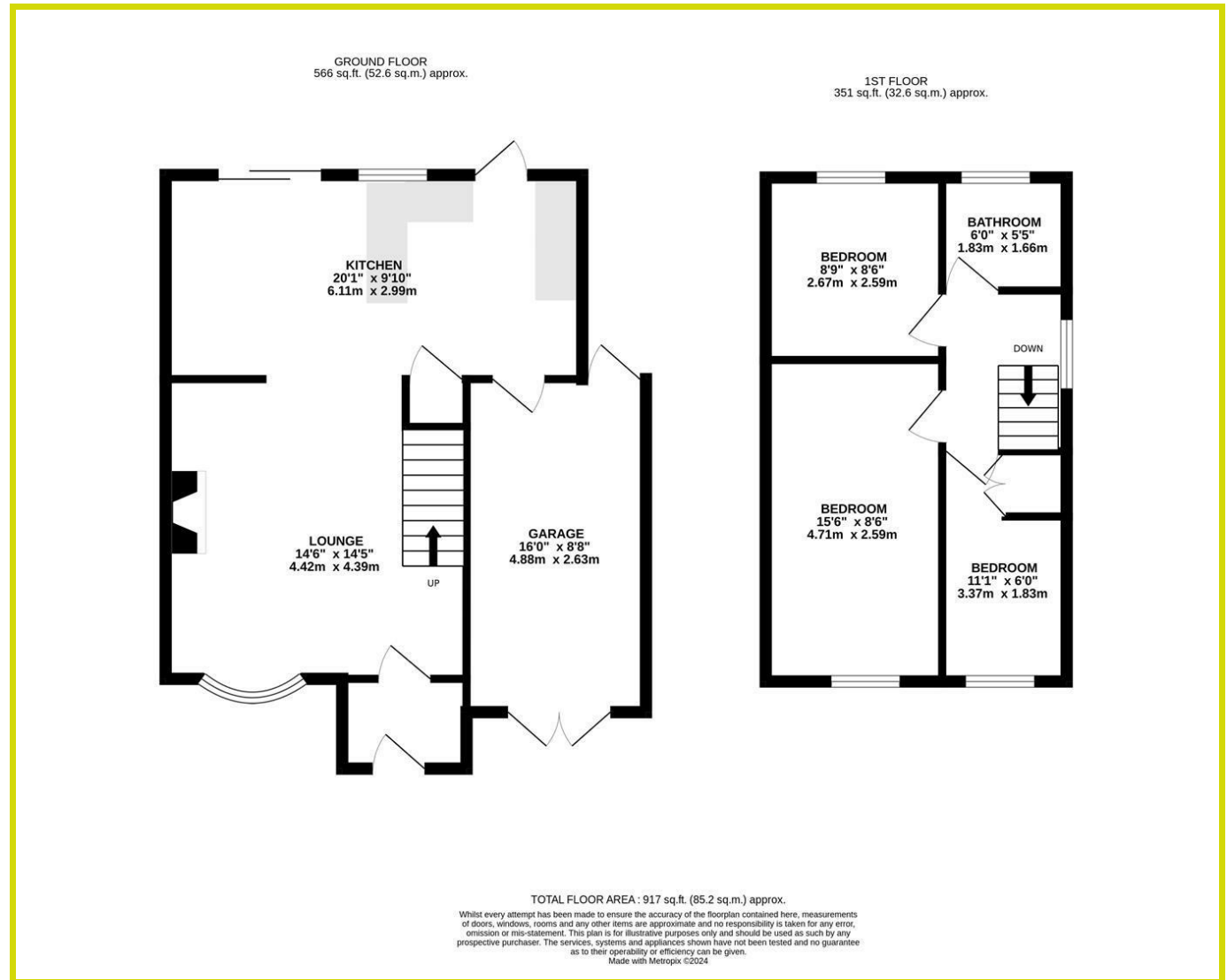
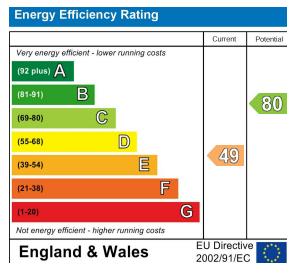


## DISCLAIMER NOTES

These sales particulars have been prepared by Thomas James Estate Agents on the instruction of the vendor. Services, equipment and fittings mentioned in these particulars have NOT been tested, and as such, no warranties can be given. Prospective purchasers are advised to make their own enquiries regarding such matters. These sales particulars are produced in good faith and are not intended to form part of a contract. Whilst Thomas James Estate Agents have taken care in obtaining internal measurements, they should only be regarded as approximate.

## MONEY LAUNDERING

Under the Protecting Against Money Laundering and the Proceeds of Crime Act 2002, Thomas James require any successful purchasers proceeding with a purchase to provide two forms of identification i.e passport or photocard driving license and a recent utility bill. This evidence will be required prior to Thomas James instructing solicitors in the purchase or the sale of a property.



Thomas James Estate Agents, 20 High Street, Ruddington, Nottinghamshire, NG11 6EH

Tel: 0115 9844660 | Email: ruddington@tjea.com | Web: www.tjea.com

These particulars, whilst believed to be accurate are set out as a general outline only for guidance and do not constitute any part of an offer or contract. Intending purchasers should not rely on them as statements of representation of fact, but must satisfy themselves by inspection or otherwise as to their accuracy. No person in this firm's employment has the authority to make or give any representation or warranty in respect of the property.

