

Devon Road

Watford, WD24 4HN



BRITISH
PROPERTY
AWARDS
2022

GOLD WINNER

ESTATE AGENT
IN BUSHEY

jw
&Co.

Incorporating LANGLEYS

Devon Road

Watford, WD24 4HN

£320,000

- First floor masionette
- Lounge/dining room
- Kitchen/breakfast room
- Two double bedrooms
 - Bathroom
- Own rear garden
- Off street parking
- New 99 year lease
- No upper chain





Devon Road

Watford, WD24 4HN

JW & CO is delighted to present this TWO BEDROOM FIRST FLOOR MAISONETTE WITH ITS OWN REAR GARDEN, situated in a highly desirable road just a short distance from Watford Junction and the town centre. With a newly extended lease, this property is an excellent choice for first-time buyers, small families, or landlords seeking a lucrative 'Buy to Let' investment opportunity.

The accommodation comprises a staircase to first floor landing, providing access to all rooms. The lounge / dining room boasts a front-facing double-glazed window, a fireplace with alcoves, and ample space for dining and relaxation. The kitchen offers a charming open space equipped with a range of fitted wall and base units in an attractive beech effect wall and base units with a window overlooking the rear garden. Completing the accommodation is two double bedrooms and a bathroom is complete with a white suite including a full-sized bath, shower, pedestal wash basin, WC, and floor-to-ceiling wall tiles. Situated off the landing is a storage cupboard with its own front-facing window presenting versatility and potential for conversion into an En-suite or dressing area for the main bedroom.

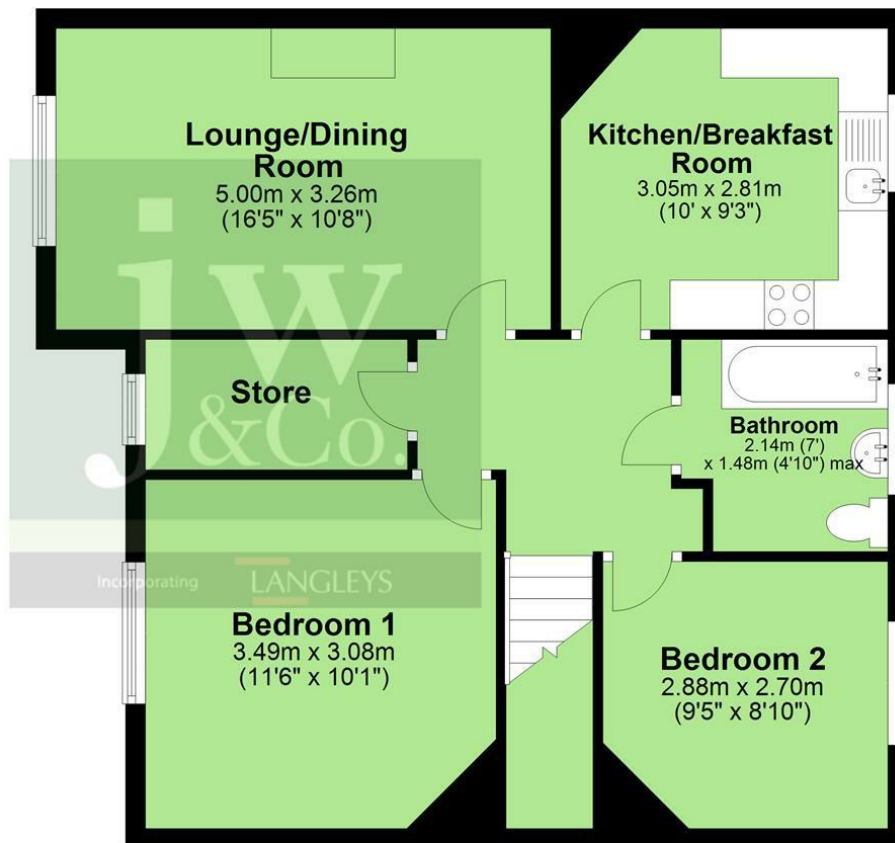
Outside, the property includes off-street parking for two cars. Side access leads to the private entrance to the generous rear garden with several hardstanding areas ideal for entertaining, along with a garden shed.





First Floor

Approx. 61.2 sq. metres (659.0 sq. feet)



JW&Co Bushey Village
 80 High Street, Bushey Village, Hertfordshire, WD23 3HD
 0208 950 3434
 bushey@jwandco.co.uk

Lounge/dining room
 16'5" x 10' (5.00m x 3.05m)

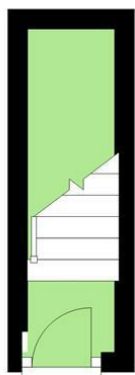
Kitchen/breakfast room
 10'10" x 10' (3.30m x 3.05m)

Bedroom One
 11'7" x 11'6" (3.53m x 3.51m)

Bedroom two
 9'5" x 8'10" (2.87m x 2.69m)

Ground Floor

Approx. 2.9 sq. metres (30.9 sq. feet)



Total area: approx. 64.1 sq. metres (689.8 sq. feet)



Energy Efficiency Rating		
	Current	Potential
<i>Very energy efficient - lower running costs</i>		
(92 plus) A		
(81-91) B		
(69-80) C		
(55-68) D		
(39-54) E		
(21-38) F		
(1-20) G		
<i>Not energy efficient - higher running costs</i>		
	63	77
England & Wales	EU Directive 2002/91/EC	

In accordance with the Consumer Protection from Unfair Trading Regulations 2008 (CPRs) and the Business Protection from Misleading Markets Regulations 2008 (BPRs) JW&CO have prepared these property particulars as a general guide to a broad description of the property. JW&CO as agents for the vendor or lessor and for themselves give notice that (a) these particulars are not intended to constitute part of an offer or contract (b) have not carried out a structural survey and the services, appliances and fittings have not been tested (c) all measurements, photographs, distances and floor plans referred to are given as a guide only and should not be relied upon for the purchase of fixtures and fittings (d) tenure details, service charges and ground rent (where applicable) are given as a guide only and should be checked and confirmed by your solicitor prior to exchange of contracts (e) neither the vendor nor any person in the employment JW&CO has any authority to make or give any representation or warranty whatsoever in respect of the property.