



**Price**

**£100,000**

**Leasehold**

2x  1x  1x 

Nottingham Drive, Kings Hill, West Malling,  
Kent, ME19

*Wards*  
Helping you move forwards





## Main features

- Stunning first floor apartment
- You can purchase 40% at £108,000 or 100% at £270,000
- Chain free - no chain worries
- Parking is stress free with allocated parking
- Lovely open plan living - great for entertaining

## Accommodation

### FIRST FLOOR

Entrance Hall

Bedroom 1: 12'7 x 10'8 (3.84m x 3.25m)

Bathroom

Bedroom 2: 12'1 x 7'10 (3.69m x 2.39m)

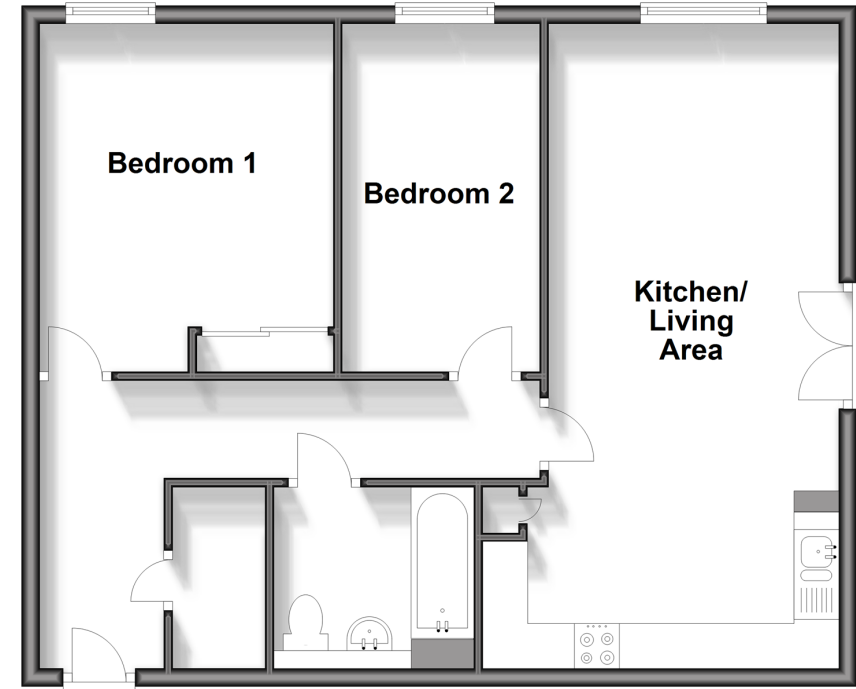
Kitchen/Living Area: 22'9 x 12'7 (6.94m x 3.84m)

### OUTSIDE

Allocated Parking Space

## First Floor

Approx. 63.8 sq. metres (686.6 sq. feet)



**Call Kings Hill - 01732 222211 ■ [wardsofkent.co.uk](http://wardsofkent.co.uk)**

- Legal advice should be taken to verify fixtures/fittings, planning, alterations and/or lease details
- Appliances & services are untested, dimensions are approximate and floor plans are not to scale



12405011/20240916/CH/JT