



**Price**  
**£349,995**

**Freehold**

2x  1x  1x 

**Ernest Road, West  
Malling, Kent, ME19**

*Wards*  
Helping you move forwards





## Main features

- A modern and generous size house
- Located close to the sought-after village of West Malling
- Ideal for first time buyers
- Two allocated parking spaces
- 6 years NHBC warranty remaining

## Accommodation

### GROUND FLOOR

Hallway

Cloakroom

Lounge: 13'6 x 11'6 (4.12m x 3.51m)

Kitchen/Diner: 15'9 x 6'9 (4.80m x 2.06m)

### FIRST FLOOR

Landing

Bedroom 1: 12'2 x 10'1 (3.71m x 3.08m)

En-Suite Shower Room

Bedroom 2: 12'0 x 8'4 (3.66m x 2.54m)

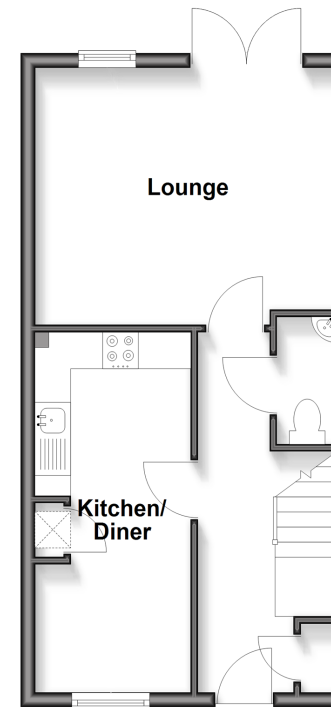
### OUTSIDE

Front & Rear Gardens

2 Allocated Parking Spaces

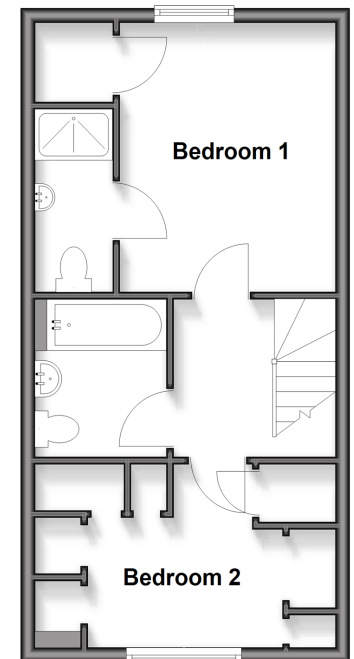
### Ground Floor

Approx. 36.2 sq. metres (389.6 sq. feet)



### First Floor

Approx. 36.2 sq. metres (389.6 sq. feet)



**Call Kings Hill - 01732 222211 ■ [wardsof Kent.co.uk](http://wardsof Kent.co.uk)**

- Legal advice should be taken to verify fixtures/fittings, planning, alterations and/or lease details
- Appliances & services are untested, dimensions are approximate and floor plans are not to scale



12405233/20251007/SW/WA