



OVER 60?

Secure this property
for up to **59% less!**

Guide Price
£221,000

Leasehold

2x  1x  1x 

**Rowan Street,
Leybourne, West
Malling, Kent, ME19**

Wards
Helping you move forwards



Main features

- Outstanding first floor modern purpose built apartment
- Exceptionally well appointed light & airy accommodation
- Close to woodland walks, shops, school & West Malling station
- Highly efficient with low running costs
- Allocated parking space off road

Accommodation

FIRST FLOOR

Entrance Hall

Lounge/Kitchen: 23'6 x 11'5 (7.17m x 3.48m)

Bedroom 1: 12'5 x 12'5 (3.79m x 3.79m)

Bedroom 2: 12'3 x 7'7 (3.74m x 2.31m)

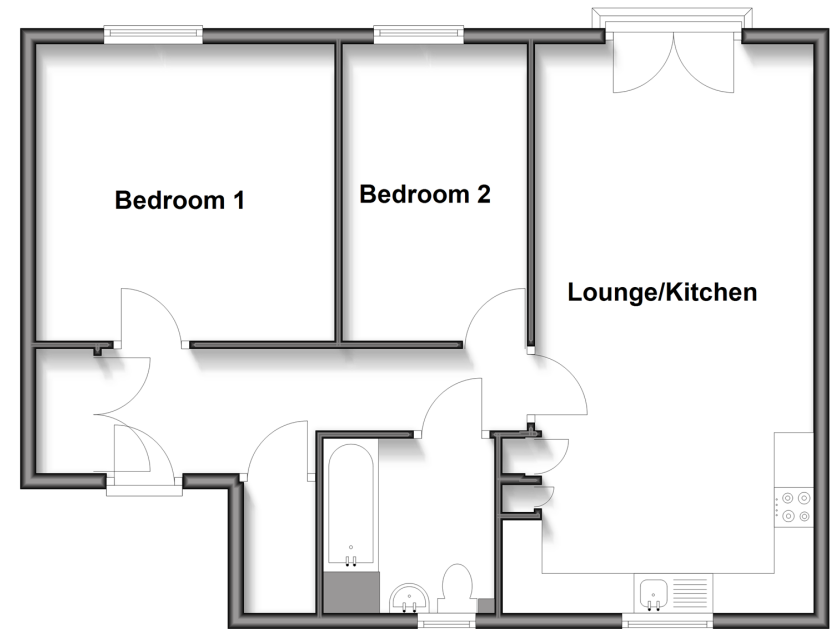
Bathroom

OUTSIDE

Allocated Parking Space

First Floor

Approx. 66.0 sq. metres (710.4 sq. feet)



Call Kings Hill - 01732 222211 ■ wardsof Kent.co.uk

- Legal advice should be taken to verify fixtures/fittings, planning, alterations and/or lease details
- Appliances & services are untested, dimensions are approximate and floor plans are not to scale
- Through a Homewise Home For Life Plan people aged 60+ can secure this property for up to 50% less, by purchasing a Lifetime Lease.



12405100/20251015/EN/NR