



Guide Price
£335,000

Freehold

2x  1x  2x 

**Javelin Road, West
Malling, Kent, ME19**

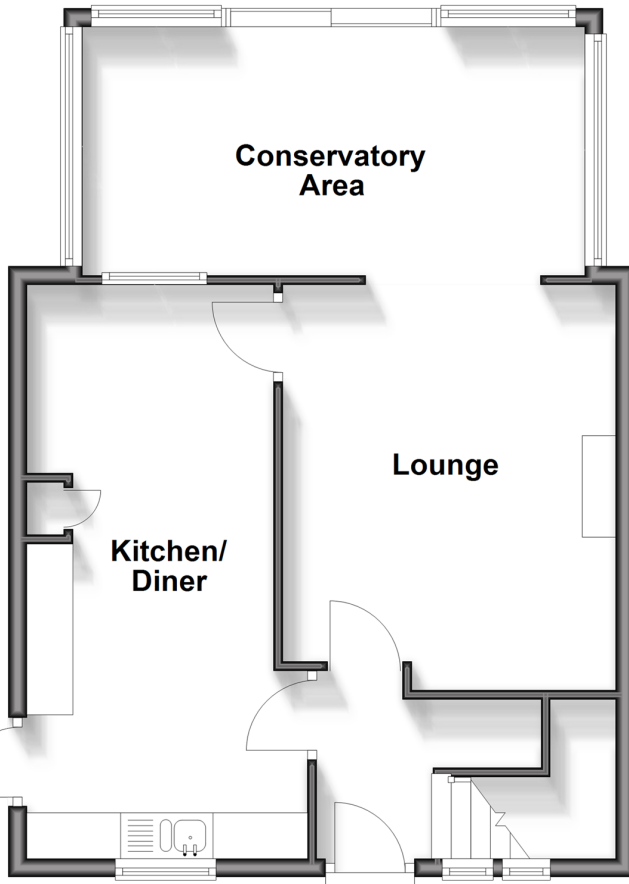
OVER 60?

Secure this property
for up to **59% less!**

Wards
Helping you move forwards

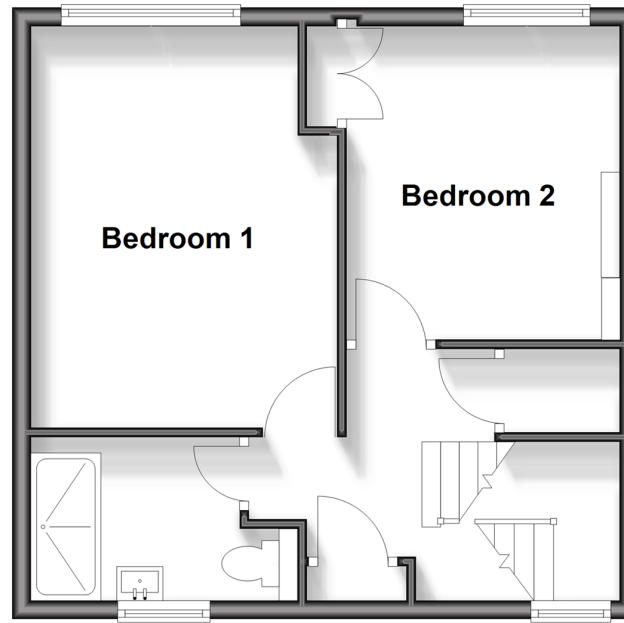
Ground Floor

Approx. 57.6 sq. metres (620.2 sq. feet)



First Floor

Approx. 39.7 sq. metres (427.4 sq. feet)



Accommodation

GROUND FLOOR

Entrance Hall

Lounge: 14'4 x 11'11 (4.37m x 3.63m)

Kitchen/Diner: 20'5 x 9'11 (6.23m x 3.02m)

Conservatory Area: 18'6 x 9'7 (5.64m x 2.92m)

FIRST FLOOR

Landing

Bedroom 1: 14'1 x 11'0 (4.30m x 3.36m)

Bedroom 2: 11'2 x 9'8 (3.41m x 2.95m)

Shower Room

OUTSIDE

Front & Rear Gardens

Double Driveway



Main features

- Improved semi-detached house with double bedrooms
- Light, bright and airy accommodation that must be viewed
- Multi vehicle brick bloc driveway
- Delightful sunny aspect rear garden
- Chain free with vacant possession



Nearest Schools

Primary Schools: Valley Invicta Primary 0.5 miles, Kings Hill School 0.5 miles, Mereworth Community Primary 1.2 miles
Secondary Schools: Grange Park School 2.4 miles, The Malling School 2.4 miles, Aylesford School - Sports



Transport Information

Train Stations: West Malling 1.8 miles, Watlington 1.9 miles, East Malling 2.4 miles



Address

Javelin Road, West Malling, Kent, ME19



Directions

For directions to this property please contact us.



Wards
Helping you move forwards

Call Kings Hill Branch 01732 222211 ■ wardsofkent.co.uk



- Legal advice should be taken to verify fixtures/fittings, planning, alterations and/or lease details
- Appliances & services are untested, dimensions are approximate and floor plans are not to scale
- Through a Homewise Home For Life Plan people aged 60+ can secure this property for up to 59% less, by purchasing a Lifetime Lease.



12405131/20250503/HJ20/NR