



OVER 60?

Secure this property
for up to **59% less!**

Price

£450,000

Freehold

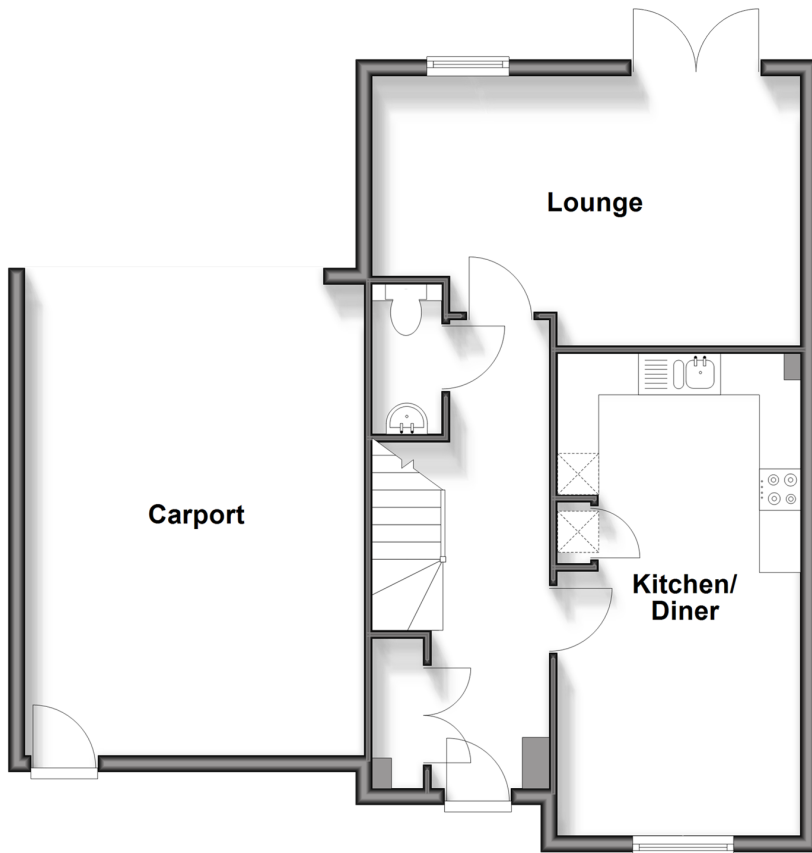
3x  2x  1x 

**Bedwyn Walk, Kings
Hill, West Malling, Kent,
ME19**

Wards
Helping you move forwards

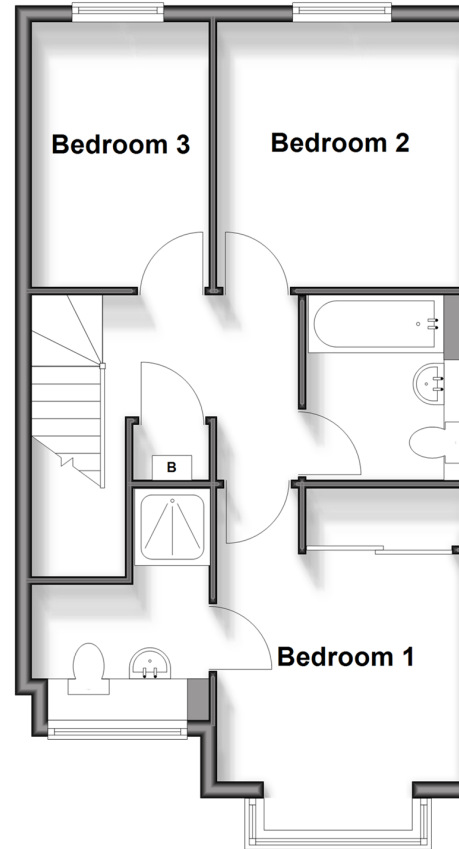
Ground Floor

Approx. 70.7 sq. metres (761.3 sq. feet)



First Floor

Approx. 46.7 sq. metres (502.2 sq. feet)



Accommodation

GROUND FLOOR

Entrance Hall

Cloakroom

Kitchen/Diner: 18'11 x 9'9 (5.77m x 2.97m)

Lounge: 17'1 x 10'6 (5.21m x 3.20m)

FIRST FLOOR

Landing

Bedroom 1: 14'9 x 9'9 (4.50m x 2.97m)

En-Suite Shower Room

Bedroom 2: 10'9 x 9'9 (3.28m x 2.97m)

Bedroom 3: 10'6 x 7'1 (3.20m x 2.16m)

Bathroom

OUTSIDE

Front & Rear Gardens

Carport: 18'6 x 13'7 (5.64m x 4.14m)

Driveway

Car Charge Port



Main features

- Beautifully presented modern semi-detached house
- Glorious setting overlooking a lovely green
- 7 years of the NHBC guarantee remaining
- Landscaped rear garden
- Large car port with EV charger & private driveway



Nearest Schools

Primary Schools: The Discovery School 0.4 miles, Kings Hill School 0.4 miles, Valley Invicta Primary 0.5 miles
Secondary Schools: The Malling School 1.6 miles, Grange Park School 2.0 miles, Aylesford School - Sports College 2.9 miles



Transport Information

Train Stations: West Malling 1.2 miles, Watlington 1.4 miles, East Malling 1.5 miles



Address

Bedwyn Walk, Kings Hill, West Malling, Kent, ME19



Directions

For directions to this property please contact us.



Wards
Helping you move forwards

Call Kings Hill Branch 01732 222211 ■ wardsofkent.co.uk



■ Legal advice should be taken to verify fixtures/fittings, planning, alterations and/or lease details ■ Appliances & services are untested, dimensions are approximate and floor plans are not to scale
■ Through a Homewise Home For Life Plan people aged 60+ can secure this property for up to 59% less, by purchasing a Lifetime Lease.



12405130/20250402/NR/NR