



**OVER 60?**

Secure this property  
for up to **59% less!**

**Price**

**£450,000**

**Freehold**

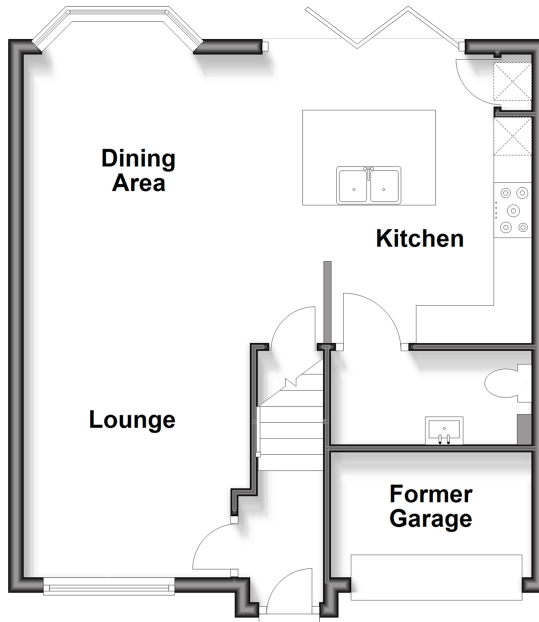
3x  1x  1x 

**Saxon Close, Kings Hill,  
Kent, ME19**

*Wards*  
Helping you move forwards

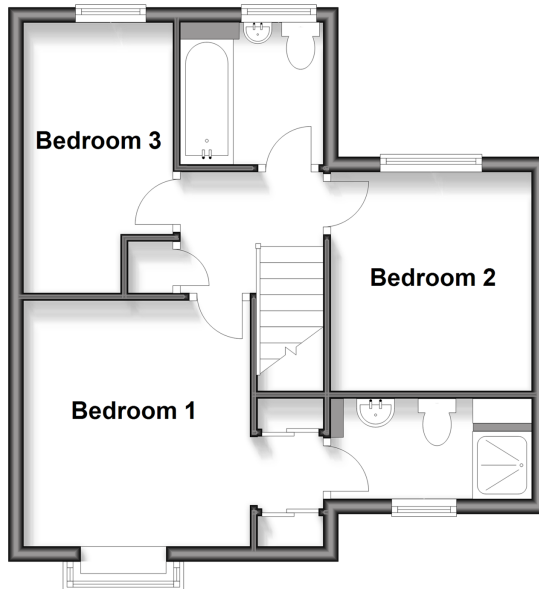
## Ground Floor

Approx. 47.0 sq. metres (506.1 sq. feet)



## First Floor

Approx. 39.5 sq. metres (425.0 sq. feet)



## Accommodation

### GROUND FLOOR

Entrance Hall

Cloakroom

Lounge: 14'9 x 9'10 (4.50m x 3.00m)

Dining Area: 10'6 x 7'5 (3.20m x 2.26m)

Kitchen: 21'9 x 12'5 (6.63m x 3.79m)

### FIRST FLOOR

Landing

Bedroom 1: 10'8 x 9'8 (3.25m x 2.95m)

En-Suite Shower Room

Bedroom 2: 9'4 x 7'8 (2.85m x 2.34m)

Bedroom 3: 9'9 x 6'4 (2.97m x 1.93m)

Bathroom

### OUTSIDE

Front & Rear Gardens

Driveway

Former Garage: 7'9 x 4'1 (2.36m x 1.25m)





## Main features

- Beautifully presented terraced family house in sought after location
- Phase 1 located within Kings Hill
- Close to all local amenities
- Recently improved with bi-folding doors onto garden
- Garage& off street parking



### Nearest Schools

Primary Schools: Valley Invicta Primary 0.6 miles, Kings Hill School 0.7 miles, The Discovery School 1.6 miles  
Secondary Schools: Grange Park School 4.3 miles, The Malling School 4.6 miles, Oakwood Park Grammar School 4.6 miles



### Transport Information

Train Stations: West Malling 2.9 miles, East Farleigh 3.9 miles, Aylesford 3.9 miles



### Address

Saxon Close, Kings Hill, Kent, ME19



### Directions

For directions to this property please contact us.





Call Kings Hill Branch 01732 222211 ■ [wardsofkent.co.uk](http://wardsofkent.co.uk)



- Legal advice should be taken to verify fixtures/fittings, planning, alterations and/or lease details
- Appliances & services are untested, dimensions are approximate and floor plans are not to scale
- Through a Homewise Home For Life Plan people aged 60+ can secure this property for up to 59% less, by purchasing a Lifetime Lease.



12405116/20250310/SW/NR