



Price
£500,000

Freehold

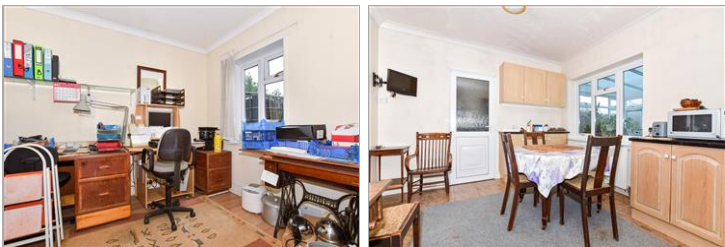
3x  2x  1x 

**London Road,
Addington, West
Malling, Kent, ME19**

OVER 60?

Secure this property
for up to **59% less!**

Wards
Helping you move forwards



Main features

- **Fantastic chalet style bungalow**
- **A fantastic investment with the opportunity to add value**
- **Large rear garden with stunning views**
- **Ample parking and garage to the front**
- **Situated in a sought after location**

Accommodation

GROUND FLOOR

Lounge: 20'1 x 11'7 (6.13m x 3.53m)
 Conservatory: 17'7 x 9'5 (5.36m x 2.87m)
 Kitchen/Diner: 25'9 x 10'7 (7.85m x 3.23m)
 Utility : 7'11 x 4'6 (2.41m x 1.37m)
 Study: 10'8 x 8'7 (3.25m x 2.62m)
 Bedroom 2: 12'9 x 11'4 (3.89m x 3.46m)
 Bedroom 3: 11'1 10 x 9'0 (3.38m x 2.75m)
 Shower/WC

FIRST FLOOR

Landing
 Bedroom 1: 14'8 x 8'5 (4.47m x 2.57m)
 En-Suite

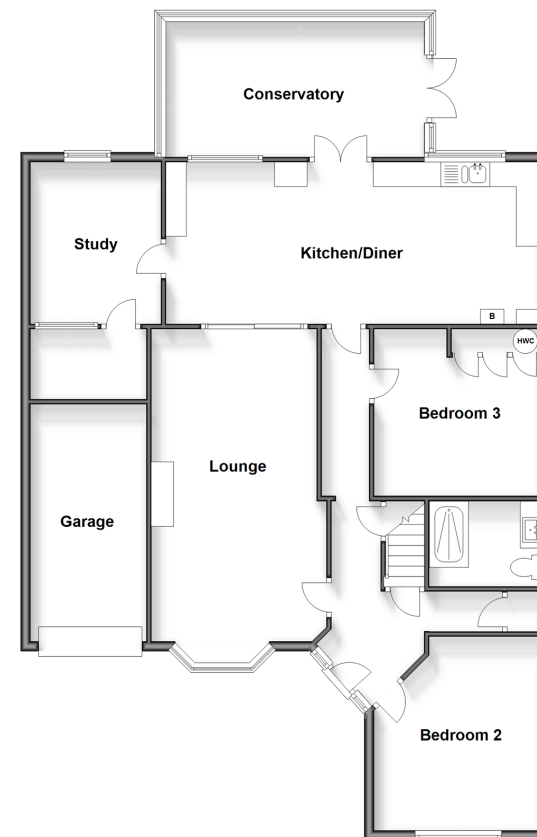
OUTSIDE

Front & Rear Gardens
 Garage & Parking

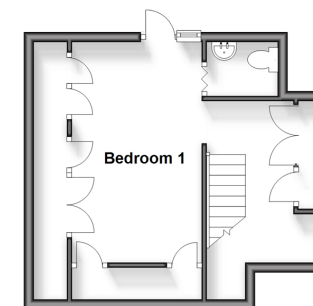
Call Kings Hill - 01732 222211 ■ wardsofkent.co.uk

- Legal advice should be taken to verify fixtures/fittings, planning, alterations and/or lease details
- Appliances & services are untested, dimensions are approximate and floor plans are not to scale
- Through a Homewise Home For Life Plan people aged 60+ can secure this property for up to 59% less, by purchasing a Lifetime Lease.

Ground Floor
 Approx. 130.0 sq. metres (1399.7 sq. feet)



First Floor
 Approx. 28.8 sq. metres (310.0 sq. feet)



EPC RATING	CURRENT:	POTENTIAL:
	D(67)	B(81)



12403789/20250218/GD/GD