



OVER 60?

Secure this property
for up to **59% less!**

Price
£390,000

Freehold

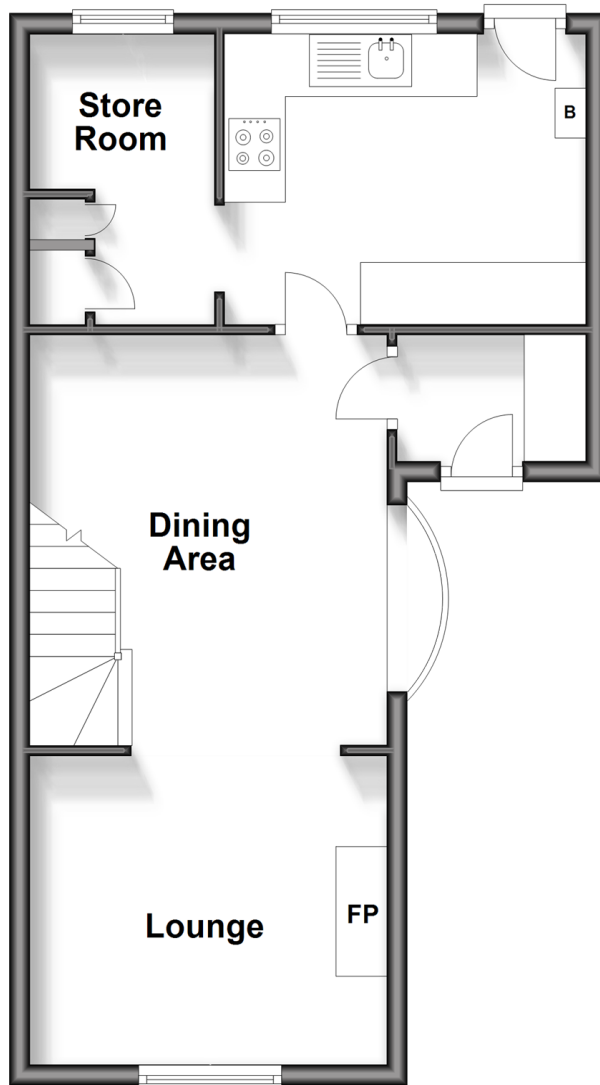
3x  1x  1x 

**Alma Road, West
Malling, Kent, ME19**

Wards
Helping you move forwards

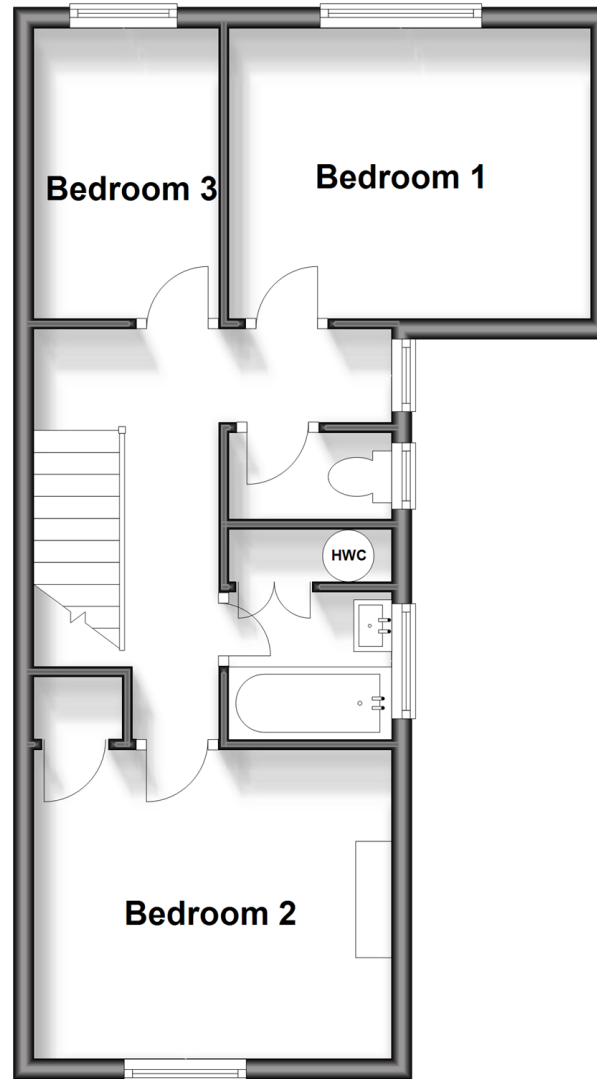
Ground Floor

Approx. 42.9 sq. metres (462.2 sq. feet)



First Floor

Approx. 40.1 sq. metres (431.9 sq. feet)



Accommodation

GROUND FLOOR

Entrance Hall

Lounge : 11'5 x 10'6 (3.48m x 3.20m)

Dining Area: 13'0 x 11'6 (3.97m x 3.51m)

Kitchen: 11'8 x 9'1 (3.56m x 2.77m)

Store Room: 9'2 x 6'0 (2.80m x 1.83m)

FIRST FLOOR

Landing

Bedroom 1: 11'8 x 10'0 (3.56m x 3.05m)

Bedroom 2: 11'10 x 9'1 (3.61m x 2.77m)

Bedroom 3: 9'3 x 5'9 (2.82m x 1.75m)

Bathroom

Separate WC

OUTSIDE

Rear Garden

Driveway



Main features

- Semi-detached house ideal first time purchase or investment
- Chain free & brimming with potential to extend (subject to planning permission)
- Outstanding value for money
- Easy access to West Malling High Street & mainline station
- Well stocked rear garden



Nearest Schools

Primary Schools: West Malling C of E Voluntary Controlled Primary and Language 0.2 miles, More Park Catholic Primary 0.8 miles, Offham Primary 0.8 miles
Secondary Schools: Grange Park School 0.7 miles, The Malling School 1.6 miles



Transport Information

Train Stations: West Malling 0.7 miles, East Malling 1.8 miles, New Hythe 2.6 miles



Address

Alma Road, West Malling, Kent, ME19



Directions

For directions to this property please contact us.



Call Kings Hill Branch 01732 222211 ■ wardsofkent.co.uk



- Legal advice should be taken to verify fixtures/fittings, planning, alterations and/or lease details
- Appliances & services are untested, dimensions are approximate and floor plans are not to scale
- Through a Homewise Home For Life Plan people aged 60+ can secure this property for up to 59% less, by purchasing a Lifetime Lease.



12405019/20250109/SW/NR