

OVER 60?

Secure this property
for up to **59% less!**

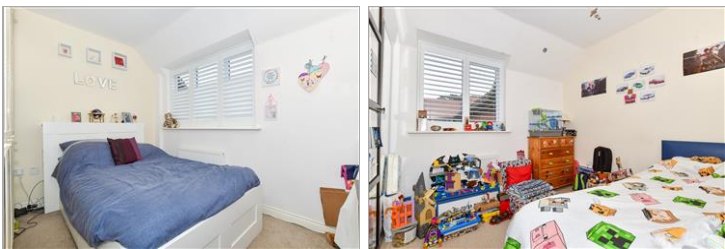


Guide Price
£270,000
Freehold

2x  1x  1x 

Teddington Drive, West Malling, Kent,
ME19

Wards
Helping you move forwards



Main features

- Stylish well appointed modern coach house
- Light, bright and airy open plan accommodation
- Courtyard setting with no passing traffic
- Car port parking directly underneath
- Ideal first purchase or investment

Accommodation

FIRST FLOOR

Entrance Hall

Kitchen/Living Area: 20'6 x 19'6 (6.25m x 5.95m)

Bedroom 1: 10'7 x 9'0 (3.23m x 2.75m)

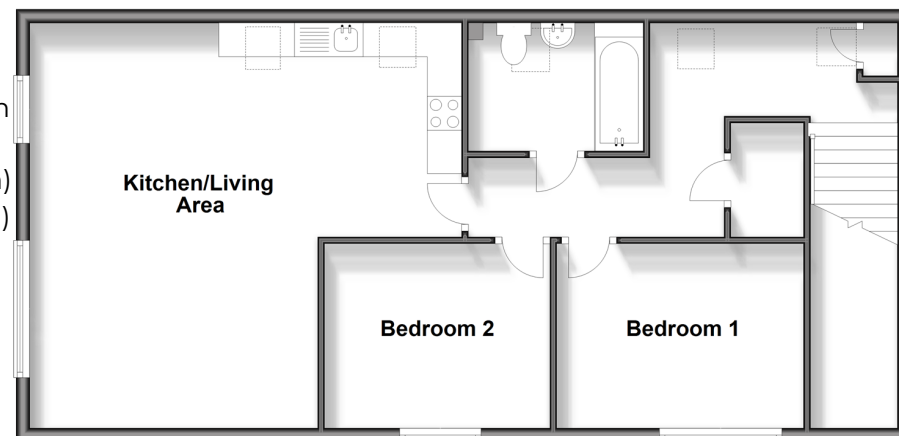
Bedroom 2: 10'7 x 9'3 (3.23m x 2.82m)

Bathroom

OUTSIDE

Car Port

First Floor
Approx. 75.7 sq. metres (814.7 sq. feet)



Call Kings Hill - 01732 222211 ■ wardsofkent.co.uk

- Legal advice should be taken to verify fixtures/fittings, planning, alterations and/or lease details
- Appliances & services are untested, dimensions are approximate and floor plans are not to scale
- Through a Homewise Home For Life Plan people aged 60+ can secure this property for up to 59% less, by purchasing a Lifetime Lease.



12405079/20250409/HJ20/NR