



**Guide Price**  
**£625,000**

**Freehold**

4x  2x  2x 

**Goldings Close, Kings  
Hill, West Malling, Kent,  
ME19**

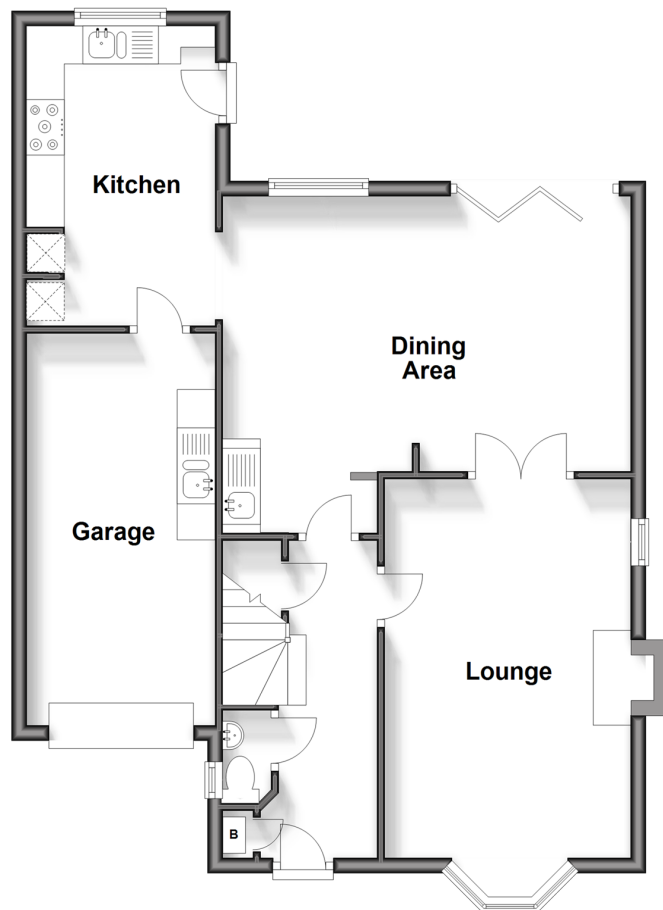
**OVER 60?**

Secure this property  
for up to **59% less!**

*Wards*  
Helping you move forwards

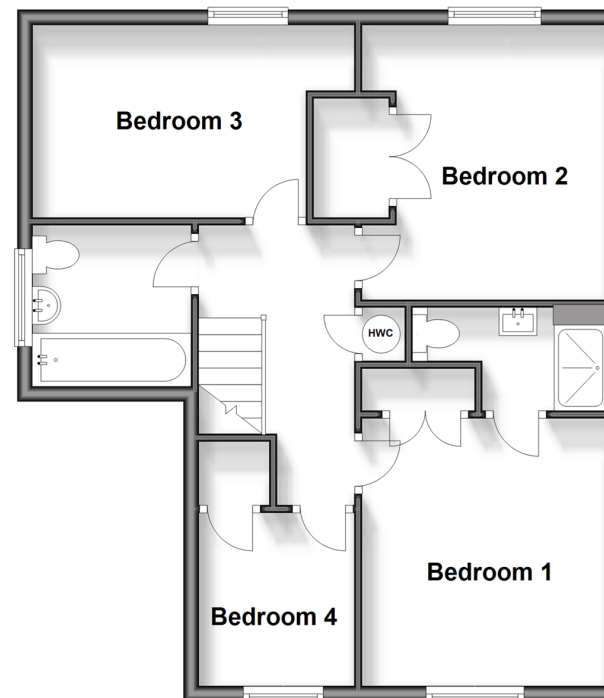
## Ground Floor

Approx. 70.9 sq. metres (762.9 sq. feet)



## First Floor

Approx. 57.5 sq. metres (619.5 sq. feet)



## Accommodation

### GROUND FLOOR

Entrance Hall  
Cloakroom  
Lounge: 18'2 x 10'8 (5.54m x 3.25m)  
Dining Area: 17'11 x 14'7 (5.46m x 4.45m)  
Kitchen: 12'10 x 8'1 (3.91m x 2.47m)

### FIRST FLOOR

Landing  
Bedroom 1: 11'6 x 10'8 (3.51m x 3.25m)  
En-Suite Shower Room  
Bedroom 2: 12'0 x 9'5 (3.66m x 2.87m)  
Bedroom 3: 11'4 x 8'6 (3.46m x 2.59m)  
Bedroom 4: 7'4 x 6'11 (2.24m x 2.11m)  
Bathroom

### OUTSIDE

Front & Rear Gardens  
Garage & Driveway





## Main features

- A beautifully presented & well maintained detached family house
- Many modern improvements made throughout
- Phase 1 with no estate agency charges to pay
- Glorious sunny aspect landscaped rear garden
- Desired cul-de-sac setting with little passing traffic



### Nearest Schools

Primary Schools: Kings Hill School 0.3 miles, Valley Invicta Primary 0.4 miles, The Discovery School 1.4 miles  
Secondary Schools: Grange Park School 4.2 miles, The Malling School 4.4 miles, The Maplesden Noakes School 4.9 miles



### Transport Information

Train Stations: West Malling 2.7 miles, Aylesford 3.6 miles, East Farleigh 3.7 miles



### Address

Goldings Close, Kings Hill, West Malling, Kent, ME19



### Directions

For directions to this property please contact us.





**Wards**  
Helping you move forwards

Call Kings Hill Branch 01732 22211 ■ [wardsofkent.co.uk](http://wardsofkent.co.uk)



- Legal advice should be taken to verify fixtures/fittings, planning, alterations and/or lease details
- Appliances & services are untested, dimensions are approximate and floor plans are not to scale
- Through a Homewise Home For Life Plan people aged 60+ can secure this property for up to 59% less, by purchasing a Lifetime Lease.



12405037/20241116/SW/NR