



Guide Price
£560,000

Freehold

4x  2x  3x 

**McArthur Drive, Kings
Hill, West Malling, Kent,
ME19**

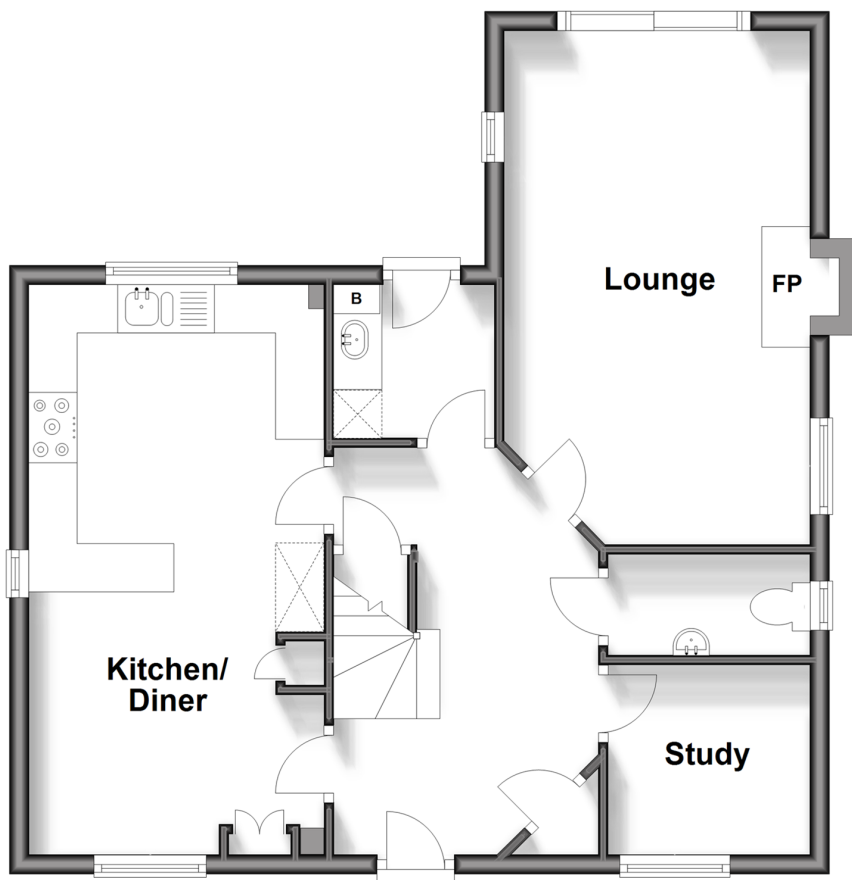
OVER 60?

Secure this property
for up to **59% less!**

Wards
Helping you move forwards

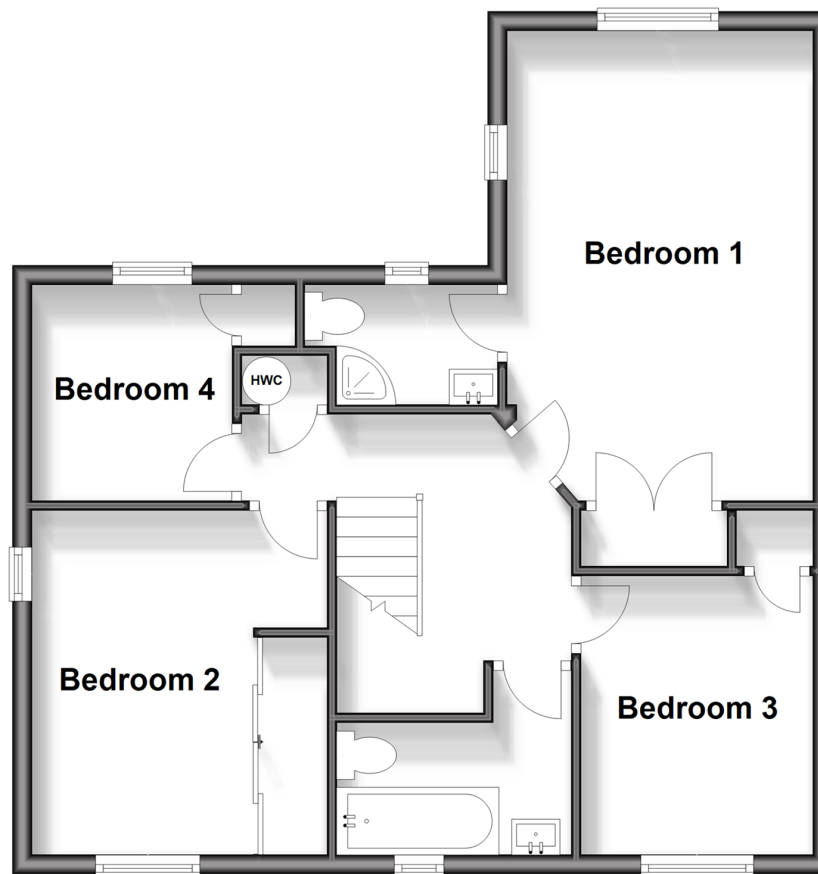
Ground Floor

Approx. 56.1 sq. metres (603.9 sq. feet)



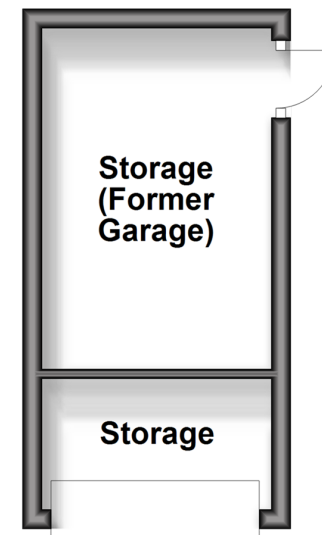
First Floor

Approx. 56.1 sq. metres (603.9 sq. feet)



Outbuilding

Approx. 11.8 sq. metres (127.5 sq. feet)



Accommodation

GROUND FLOOR

Entrance Hall
Cloakroom
Lounge: 17'7 x 10'5 (5.36m x 3.18m)
Study: 7'1 x 6'11 (2.16m x 2.11m)
Kitchen/Diner: 19'5 x 10'0 (5.92m x 3.05m)
Utility Room

Landing

Bedroom 1: 15'9 x 10'4 (4.80m x 3.15m)
En-Suite Shower Room
Bedroom 2: 11'9 x 10'2 (3.58m x 3.10m)
Bedroom 3: 10'6 x 8'3 (3.20m x 2.52m)
Bedroom 4: 7'5 x 7'1 (2.26m x 2.16m)
Bathroom

Front & Rear Gardens

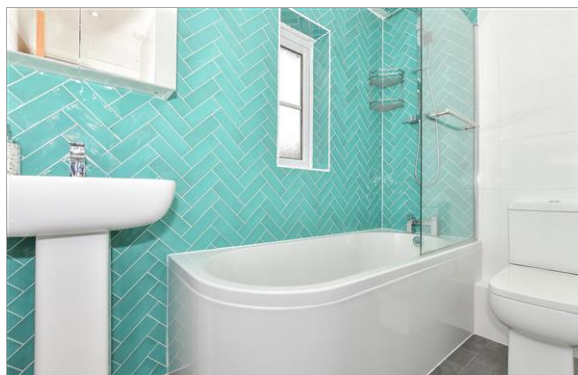
Driveway

OUT BUILDING

Converted Garage: 11'7 x 7'9 (3.53m x 2.36m)

FIRST FLOOR

OUTSIDE



Main features

- A beautifully presented & move in ready detached family house
- Generous accommodation to include three reception rooms
- Partially converted garage ideal for home working
- Extended double driveway
- Discovery school, woodland walks & cricket pitch only a short walk away



Nearest Schools

Primary Schools: Valley Invicta Primary 0.0 miles, The Discovery School 0.2 miles, Kings Hill School 1.0 miles
Secondary Schools: Grange Park School 4.2 miles, St Simon Stock Catholic School 4.3 miles, St Augustine Academy 4.4 miles



Transport Information

Train Stations: West Malling 3.5 miles, Barming 3.6 miles, New Hythe 3.6 miles



Address

McArthur Drive, Kings Hill, West Malling, Kent, ME19



Directions

For directions to this property please contact us.



Call Kings Hill Branch 01732 222211 ■ wardsofkent.co.uk



- Legal advice should be taken to verify fixtures/fittings, planning, alterations and/or lease details
- Appliances & services are untested, dimensions are approximate and floor plans are not to scale
- Through a Homewise Home For Life Plan people aged 60+ can secure this property for up to 59% less, by purchasing a Lifetime Lease.



12405060/20241019/SW/NR