



Price
£425,000

Freehold

3x  2x  1x 

**Malpass Drive,
Leybourne, West
Malling, Kent, ME19**

OVER 60?

Secure this property
for up to **59% less!**

Wards
Helping you move forwards



Main features

- Practical & versatile semi-detached living accommodation over 3 floors
- Well proportioned sunny aspect rear garden
- Private driveway for 2 cars & garage
- Remaining NHBC guarantee for peace of mind
- Incredibly popular Phase II development of Leybourne Chase

Accommodation

GROUND FLOOR

Entrance Hall

Cloakroom

Lounge: 14'0 x 10'4 (4.27m x 3.15m)

Kitchen: 10'7 x 7'4 (3.23m x 2.24m)

FIRST FLOOR

Landing

Bedroom 2: 14'0 x 10'4 (4.27m x 3.15m)

Bedroom 3: 9'7 x 7'3 (2.92m x 2.21m)

Bathroom

SECOND FLOOR

Landing

Bedroom 1: 16'0 x 12'0 (4.88m x 3.66m)

En-Suite Shower Room

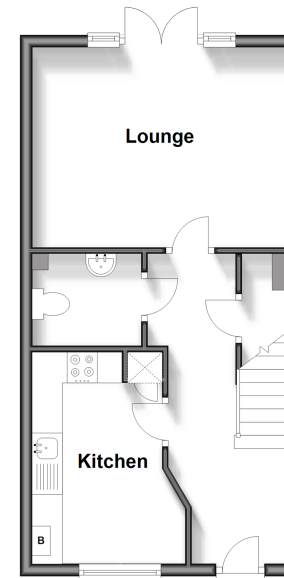
OUTSIDE

Front & Rear Gardens

Garage & Driveway

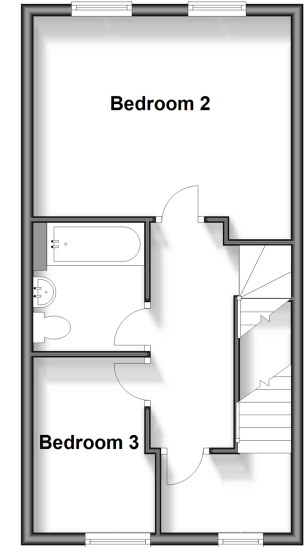
Ground Floor

Approx. 35.9 sq. metres (386.1 sq. feet)



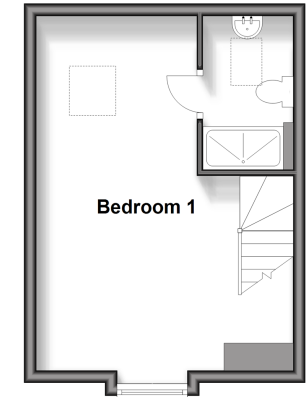
First Floor

Approx. 35.9 sq. metres (386.1 sq. feet)



Second Floor

Approx. 24.8 sq. metres (267.4 sq. feet)



Call Kings Hill - 01732 222211 ■ wardsofkent.co.uk

- Legal advice should be taken to verify fixtures/fittings, planning, alterations and/or lease details
- Appliances & services are untested, dimensions are approximate and floor plans are not to scale
- Through a Homewise Home For Life Plan people aged 60+ can secure this property for up to 59% less, by purchasing a Lifetime Lease.



12405065/20241014/CH/NR