

**OVER 60?**

Secure this property  
for up to **59% less!**



**Guide Price**  
**£550,000**  
**Freehold**

3x  2x  2x 

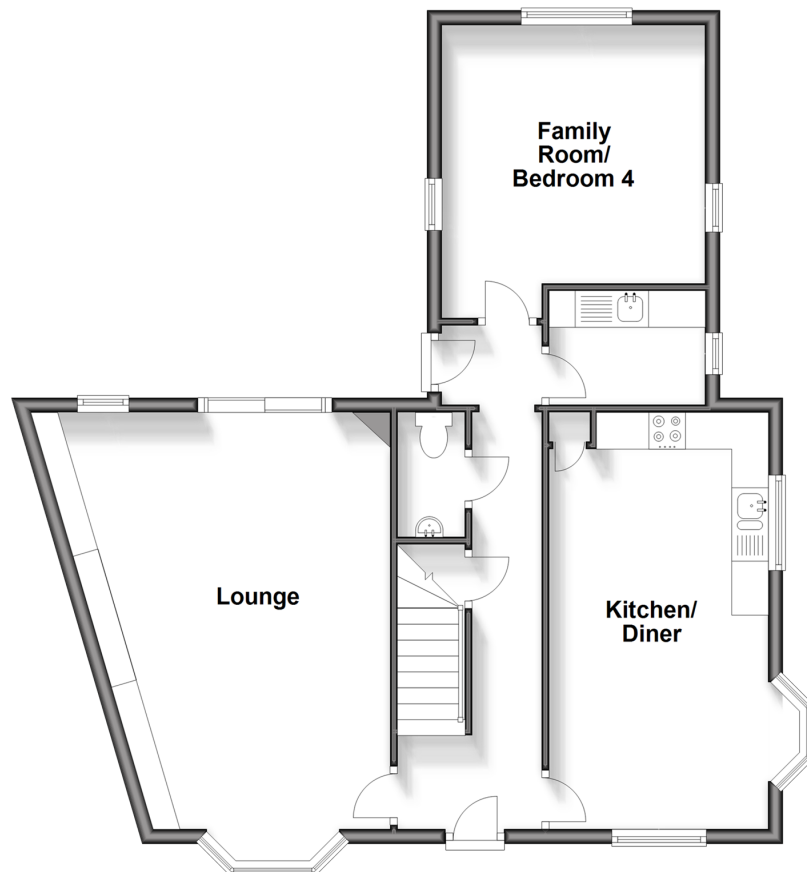
Discovery Drive, Kings Hill, West Malling,  
Kent, ME19

**Wards**  
Helping you move forwards



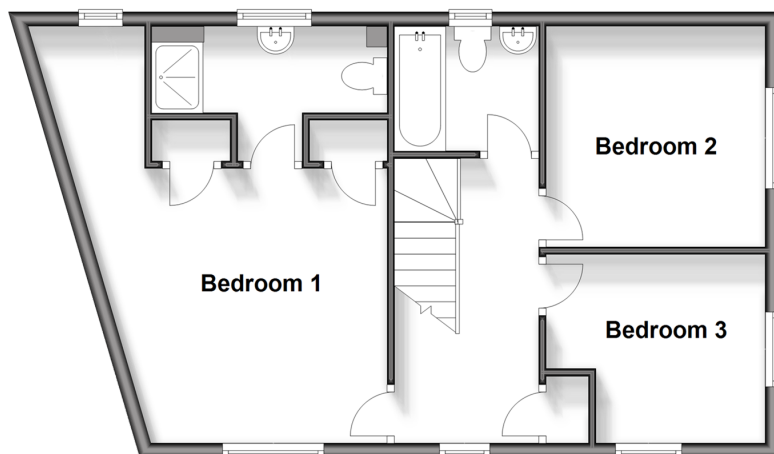
### Ground Floor

Approx. 71.7 sq. metres (771.6 sq. feet)



### First Floor

Approx. 52.4 sq. metres (563.6 sq. feet)



## Accommodation

### GROUND FLOOR

Entrance Hall

Cloakroom

Lounge: 19'4 x 16'1 (5.90m x 4.91m)

Kitchen/Diner: 18'8 x 9'10 (5.69m x 3.00m)

Family Room/Bedroom 4: 13'1 x 11'6 (3.99m x 3.51m)

Utility Room: 9'11 x 4'11 (3.02m x 1.50m)

### FIRST FLOOR

Landing

Bedroom 1: 19'4 x 14'1 (5.90m x 4.30m)

En-Suite Shower Room

Bedroom 2: 9'10 x 9'10 (3.00m x 3.00m)

Bedroom 3: 9'10 x 8'6 (3.00m x 2.59m)

Bathroom

### OUTSIDE

Front & Rear Gardens

Garage & Driveway



## Main features

- Most impressive improved end of terraced modern house
- Painstakingly renovated throughout
- Ideal layout for modern family living
- Driveway & partially converted garage
- Close to Discovery school, woodland walks & Liberty Square



### Nearest Schools

Primary Schools: The Discovery School 0.3 miles, Valley Invicta Primary 0.7 miles, Kings Hill School 0.9 miles  
Secondary Schools: St Augustine Academy 3.7 miles, Oakwood Park Grammar School 3.7 miles, Holmesdale Technology College 3.8 miles



### Transport Information

Train Stations: Yalding 3.0 miles, East Farleigh 3.0 miles, Aylesford 3.1 miles



### Address

Discovery Drive, Kings Hill, West Malling, Kent, ME19



### Directions

For directions to this property please contact us.





**Wards**  
Helping you move forwards

Call Kings Hill Branch 01732 222211 ■ [wardsofkent.co.uk](http://wardsofkent.co.uk)



■ Legal advice should be taken to verify fixtures/fittings, planning, alterations and/or lease details ■ Appliances & services are untested, dimensions are approximate and floor plans are not to scale  
■ Through a Homewise Home For Life Plan people aged 60+ can secure this property for up to 59% less, by purchasing a Lifetime Lease.



12404561/20241003/SW/NR