



Guide Price
£900,000

Freehold

5x  4x  3x 

**Wells Close, Kings Hill,
West Malling, Kent,
ME19**

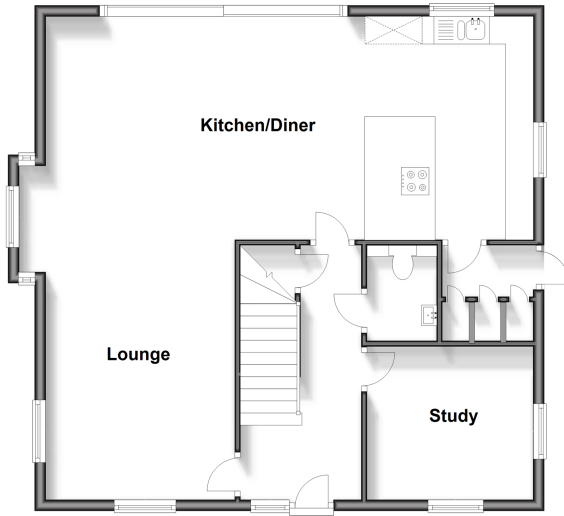
OVER 60?

Secure this property
for up to **59% less!**

Wards
Helping you move forwards

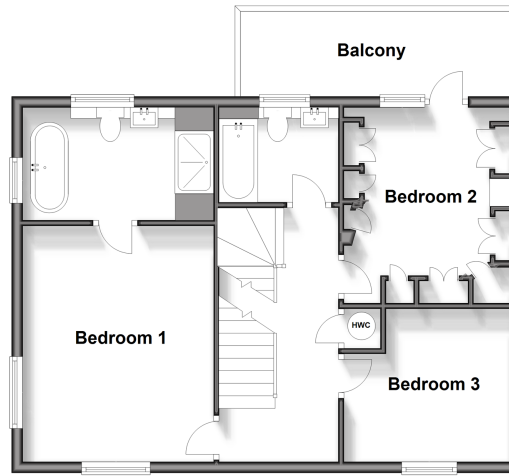
Ground Floor

Approx. 77.9 sq. metres (838.7 sq. feet)



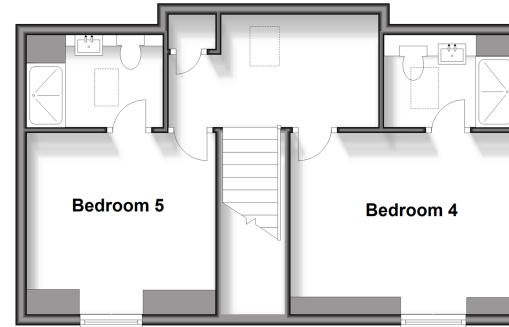
First Floor

Approx. 56.5 sq. metres (608.7 sq. feet)



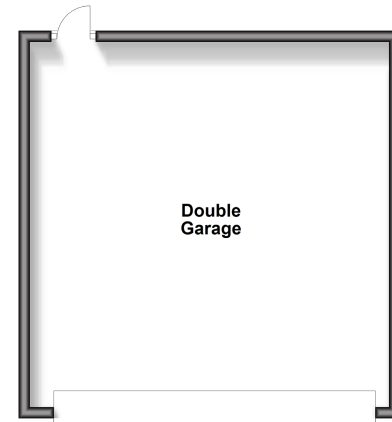
Second Floor

Approx. 46.0 sq. metres (495.0 sq. feet)



Outbuilding

Approx. 43.0 sq. metres (462.9 sq. feet)



Accommodation

GROUND FLOOR

Entrance Hall
Cloakroom
Lounge: 16'9 x 11'3 (5.11m x 3.43m)
Kitchen/Diner: 32'2 x 12'1 (9.81m x 3.69m)
Study: 10'2 x 9'0 (3.10m x 2.75m)
Utility Room: 5'10 x 5'2 (1.78m x 1.58m)

FIRST FLOOR

Landing
Bedroom 1: 13'11 x 11'2 (4.24m x 3.41m)
En-Suite Bathroom
Bedroom 2: 10'2 x 9'2 (3.10m x 2.80m)
Bedroom 3: 10'0 x 10'0 (3.05m x 3.05m)
Bathroom

SECOND FLOOR

Landing
Bedroom 4: 13'6 x 10'0 (4.12m x 3.05m)
En-Suite Shower Room
Bedroom 5: 11'5 x 11'4 (3.48m x 3.46m)
En-Suite Shower Room

OUTSIDE

Landscaped Rear Garden
Double Garage: 21'6 x 21'6 (6.56m x 6.56m)
Double Driveway



Main features

- Prime non overlooked position enjoying woodland views
- Substantial upgrades throughout this extended detached house
- Sensational landscaped rear garden & double garage
- Double bedrooms & 4 bathroom/shower rooms the most attractive desirable property within this phase of the development



Nearest Schools

Primary Schools: Horsmonden Primary 353 miles, Pembury School 353 miles, Brenchley and Matfield C of E Voluntary Aided Primary 353 miles
Secondary Schools: Oakley School 353 miles, Kent College Pembury 353 miles, Meadows School 353 miles



Transport Information

Train Stations: Paddock Wood 353 miles, Beltring 353 miles, Yalding 353 miles



Address

Wells Close, Kings Hill, West Malling, Kent, ME19



Directions

For directions to this property please contact us.



Wards
Helping you move forwards

Call Kings Hill Branch 01732 22211 ■ wardsof Kent.co.uk



- Legal advice should be taken to verify fixtures/fittings, planning, alterations and/or lease details
- Appliances & services are untested, dimensions are approximate and floor plans are not to scale
- Through a Homewise Home For Life Plan people aged 60+ can secure this property for up to 59% less, by purchasing a Lifetime Lease.



12405034/20241026/SW/NR