



Price

£125,000

Leasehold

2x  1x  1x 

**Tower View, Kings Hill,
West Malling, Kent,
ME19**

Wards
Helping you move forwards



Main features

- An incredibly spacious ground floor flat
- Light, bright and airy accommodation throughout
- Close to Liberty Square with its vast amenities
- An incredible opportunity for a first time purchase
- Chain free with allocated parking

Accommodation

GROUND FLOOR

Entrance Hall

Lounge: 14'1 x 13'1 (4.30m x 3.99m)

Kitchen/Breakfast Room: 13'9 x 9'6 (4.19m x 2.90m)

Bedroom 1: 13'10 x 9'10 (4.22m x 3.00m)

Bedroom 2: 8'10 x 8'10 (2.69m x 2.69m)

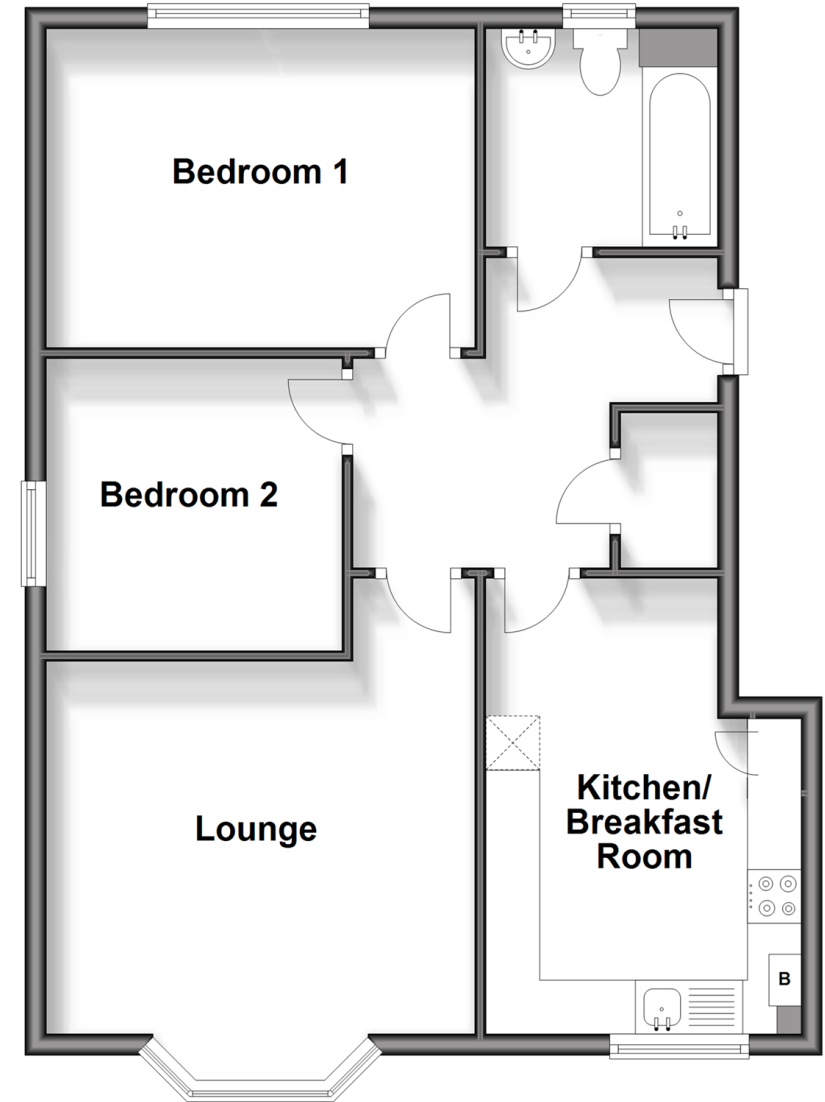
Bathroom

OUTSIDE

Allocated Parking

Ground Floor

Approx. 60.9 sq. metres (655.8 sq. feet)



Call Kings Hill - 01732 222211 ■ wardsof Kent.co.uk

- Legal advice should be taken to verify fixtures/fittings, planning, alterations and/or lease details
- Appliances & services are untested, dimensions are approximate and floor plans are not to scale



12404982/20240827/NR/NR