



Price

£226,950

Leasehold

2x  1x  1x 

Hawley Drive, Leybourne, West Malling,
Kent, ME19

Wards
Helping you move forwards



Main features

- Beautifully presented modern ground floor apartment
- Light bright & airy accommodation
- Surrounded by woodlands walks
- Discounted open market value scheme
- Allocated parking in front of the property

Accommodation

GROUND FLOOR

Entrance Hall

Lounge/Kitchen: 23'7 x 11'11 (7.19m x 3.63m)

Bedroom 1: 16'6 x 10'4 (5.03m x 3.15m)

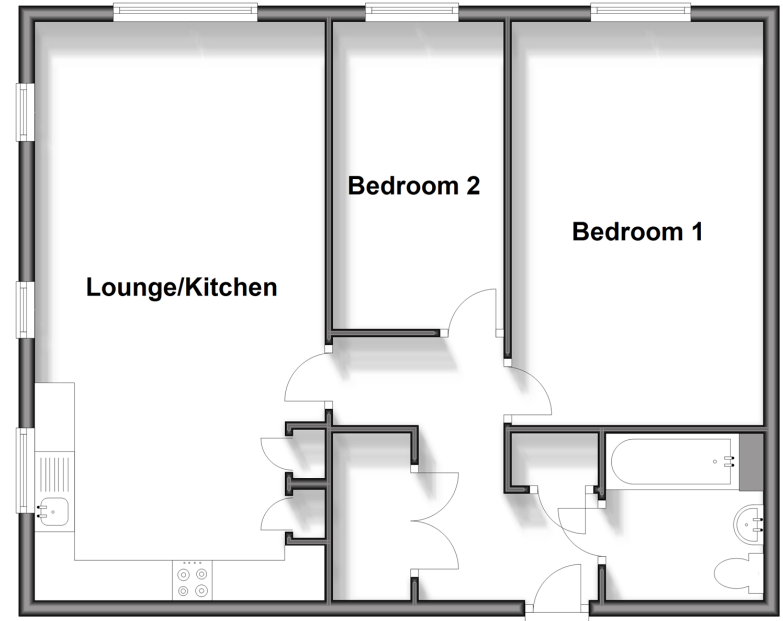
Bedroom 2: 12'7 x 7'0 (3.84m x 2.14m)

Bathroom

OUTSIDE

Allocated parking

Ground Floor
Approx. 65.9 sq. metres (709.5 sq. feet)



Call Kings Hill - 01732 222211 ■ wardsof Kent.co.uk

- Legal advice should be taken to verify fixtures/fittings, planning, alterations and/or lease details
- Appliances & services are untested, dimensions are approximate and floor plans are not to scale



12405016/20240715/SG/NR