



Price
£750,000

Freehold

4x  2x  1x 

**Woodlands Close,
Teston, Maidstone, Kent,
ME18**

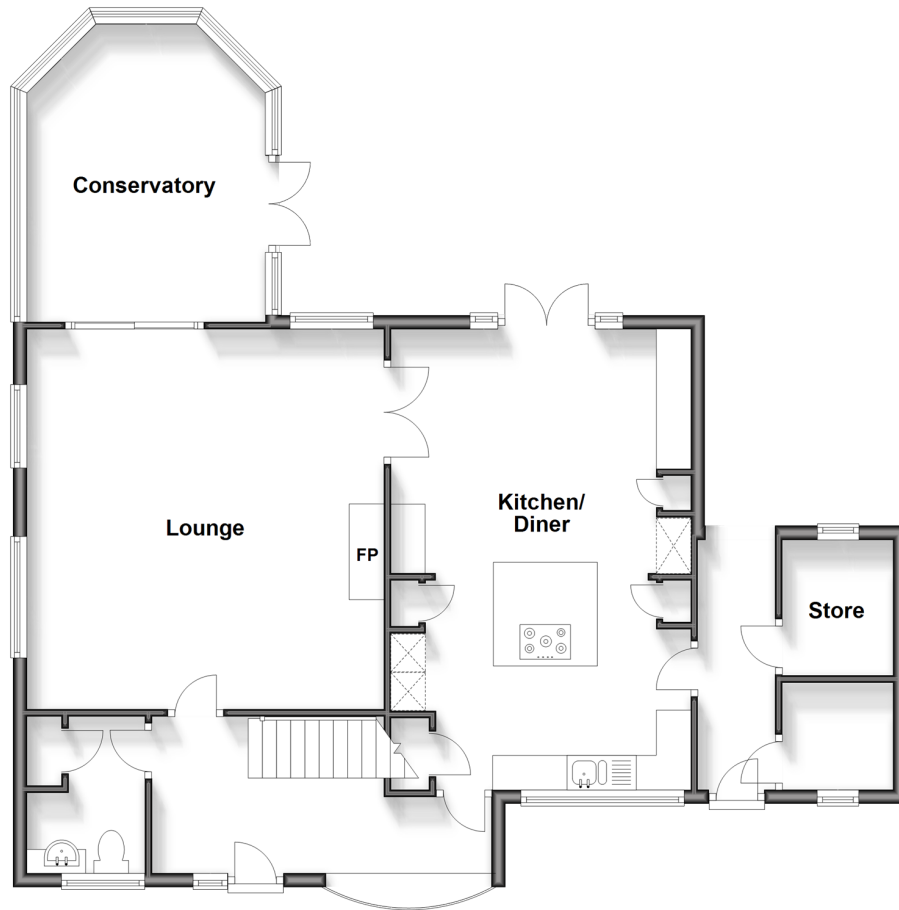
OVER 60?

Secure this property
for up to **59% less!**

Wards
Helping you move forwards

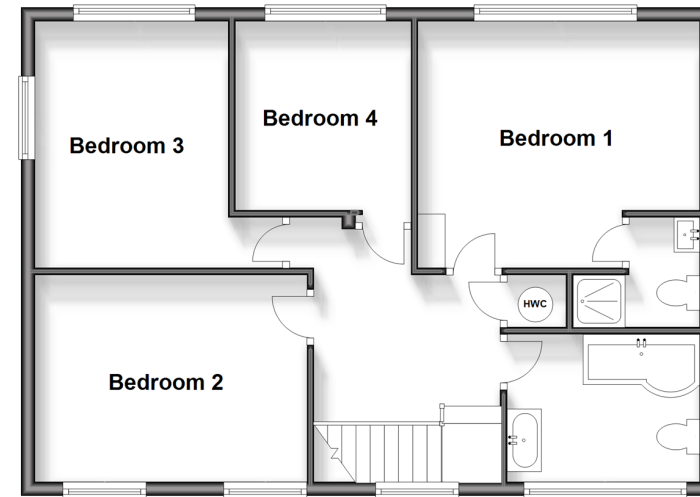
Ground Floor

Approx. 96.7 sq. metres (1041.1 sq. feet)



First Floor

Approx. 63.7 sq. metres (685.5 sq. feet)



Accommodation

GROUND FLOOR

Entrance Hall
Cloakroom
Lounge: 18'0 x 17'2 (5.49m x 5.24m)
Kitchen/Diner: 28'6 x 11'0 (8.69m x 3.36m)
Conservatory: 11'2 x 11'2 (3.41m x 3.41m)

FIRST FLOOR

Landing
Bedroom 1: 12'5 x 11'0 (3.79m x 3.36m)
En-Suite Shower Room
Bedroom 2: 12'0 x 9'4 (3.66m x 2.85m)
Bedroom 3: 12'5 x 11'0 (3.79m x 3.36m)
Bedroom 4: 9'4 x 9'3 (2.85m x 2.82m)
Bathroom

OUTSIDE

Front & Rear Gardens
Garage
Large Driveway



Main features

- Generous detached family house on a substantial secluded plot
- Benefiting from modern improvements & renovation
- Quiet cul-de-sac setting within a popular village
- Beautiful well stocked sunny aspect rear garden
- Excellent potential for extension (subject to planning permission)



Nearest Schools

Primary Schools: Watlingbury C of E Primary 1.0 miles, Barming Primary 1.5 miles, The Discovery School 1.5 miles
Secondary Schools: Bower Grove School 2.1 miles, The Malling School 2.3 miles, Oakwood Park Grammar School 2.5 miles



Transport Information

Train Stations: Watlingbury 0.8 miles, East Farleigh 1.8 miles, East Malling 2.0 miles



Address

Woodlands Close, Teston, Maidstone, Kent, ME18



Directions

For directions to this property please contact us.



Call Kings Hill Branch 01732 222211 ■ wardsofkent.co.uk



■ Legal advice should be taken to verify fixtures/fittings, planning, alterations and/or lease details ■ Appliances & services are untested, dimensions are approximate and floor plans are not to scale
■ Through a Homewise Home For Life Plan people aged 60+ can secure this property for up to 59% less, by purchasing a Lifetime Lease.



12404997/20240711/CH/NR