



Guide Price
£650,000

Freehold

4x  2x  2x 

**Goldings Close, Kings
Hill, West Malling, Kent,
ME19**

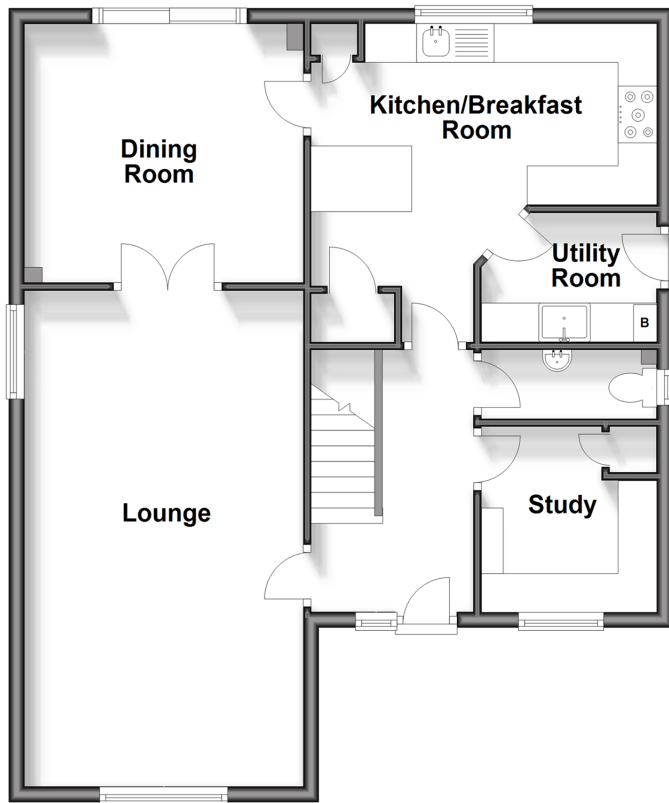
OVER 60?

Secure this property
for up to **59% less!**

Wards
Helping you move forwards

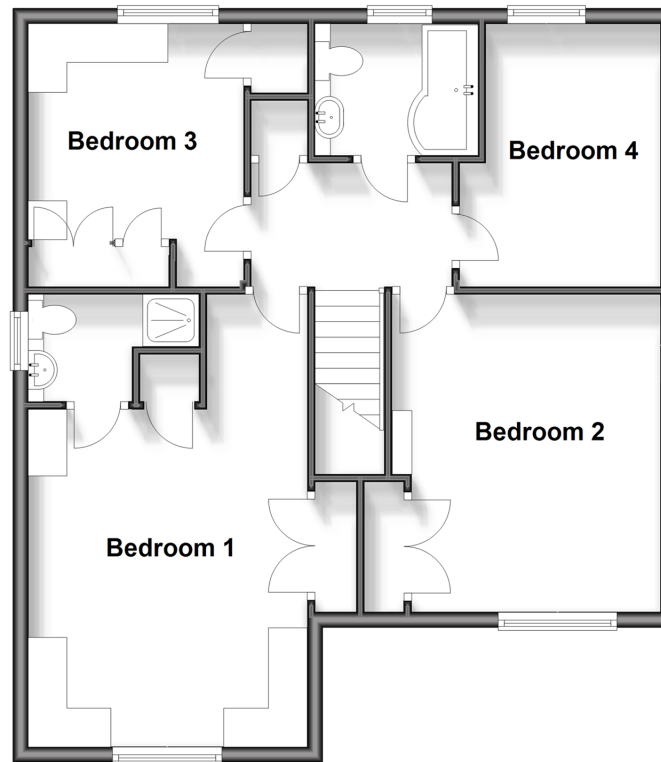
Ground Floor

Approx. 70.1 sq. metres (754.5 sq. feet)



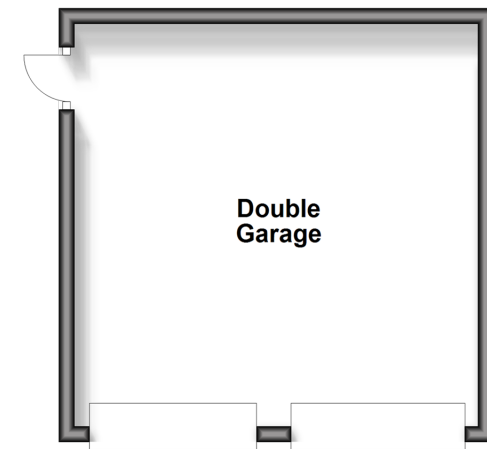
First Floor

Approx. 68.2 sq. metres (734.6 sq. feet)



Outbuilding

Approx. 27.1 sq. metres (291.6 sq. feet)



Accommodation

GROUND FLOOR

- Entrance Hall
- Cloakroom
- Lounge: 20'5 x 11'4 (6.23m x 3.46m)
- Dining room: 11'5 x 10'6 (3.48m x 3.20m)
- Kitchen/Breakfast Room: 14'3 x 13'0 (4.35m x 3.97m)
- Study: 7'5 x 7'2 (2.26m x 2.19m)
- Utility Room: 7'1 x 5'1 (2.16m x 1.55m)

FIRST FLOOR

- Landing
- Bedroom 1: 14'2 x 11'4 (4.32m x 3.46m)
- En-Suite Shower Room
- Bedroom 2: 13'3 x 10'9 (4.04m x 3.28m)
- Bedroom 3: 10'7 x 9'6 (3.23m x 2.90m)
- Bedroom 4: 10'7 x 8'6 (3.23m x 2.59m)
- Bathroom

OUTSIDE

- Front & Rear Gardens
- Double Garage
- Double Driveway
- Further Allocated Space



Main features

- Generous detached house in an idyllic cul-de-sac setting
- Desired phase 1 with no estate charges to pay
- Intriguing plot with copious parking
- Ideally placed for woodland walks & Liberty Square
- Secluded gardens & potential to extend (subject to planning permission)



Nearest Schools

Primary Schools: Kings Hill School 0.3 miles, Valley Invicta Primary 0.4 miles, The Discovery School 1.4 miles
Secondary Schools: Grange Park School 4.2 miles, The Malling School 4.4 miles, The Maplesden Noakes School 4.9 miles



Transport Information

Train Stations: West Malling 2.7 miles, Aylesford 3.6 miles, East Farleigh 3.7 miles



Address

Goldings Close, Kings Hill, West Malling, Kent, ME19



Directions

For directions to this property please contact us.



Wards
Helping you move forwards

Call Kings Hill Branch 01732 22211 ■ wardsofkent.co.uk



■ Legal advice should be taken to verify fixtures/fittings, planning, alterations and/or lease details ■ Appliances & services are untested, dimensions are approximate and floor plans are not to scale
■ Through a Homewise Home For Life Plan people aged 60+ can secure this property for up to 59% less, by purchasing a Lifetime Lease.

EPC RATING Lightbulb icon 4 bars	CURRENT: D(68)	POTENTIAL: B(81)
--	--------------------------	----------------------------

12402112/20240723/NR/NR