



Guide Price
£700,000

Freehold

6x  4x  2x 

**Atlas Close, Kings Hill,
West Malling, Kent,
ME19**

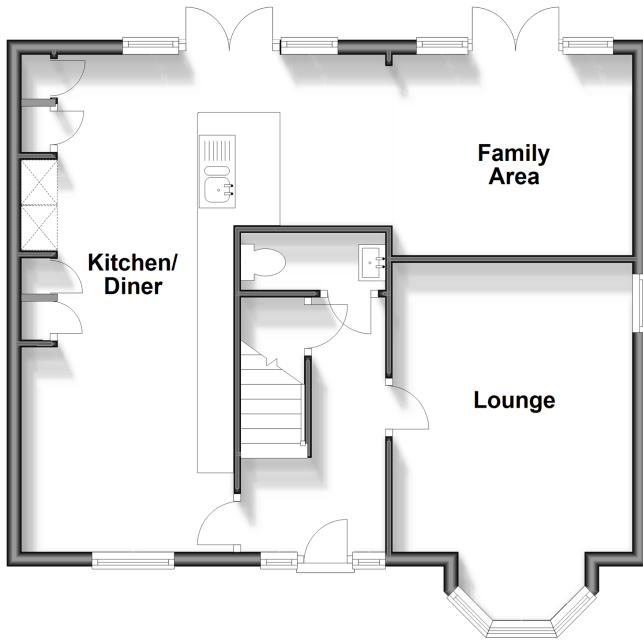
OVER 60?

Secure this property
for up to **59% less!**

Wards
Helping you move forwards

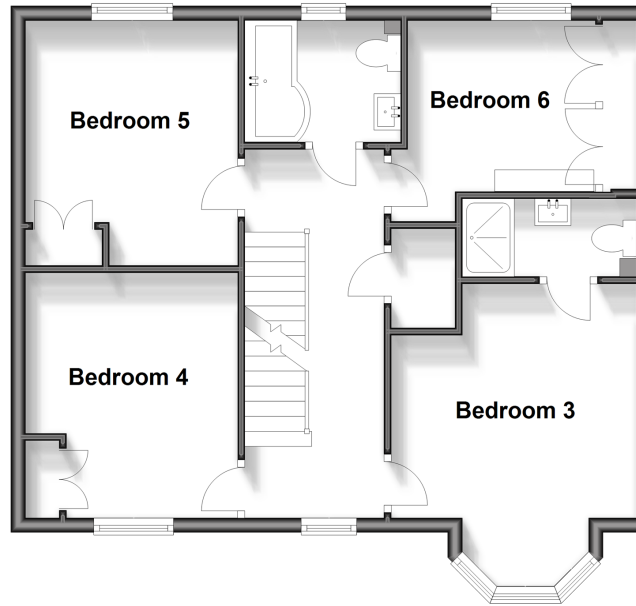
Ground Floor

Approx. 59.3 sq. metres (638.3 sq. feet)



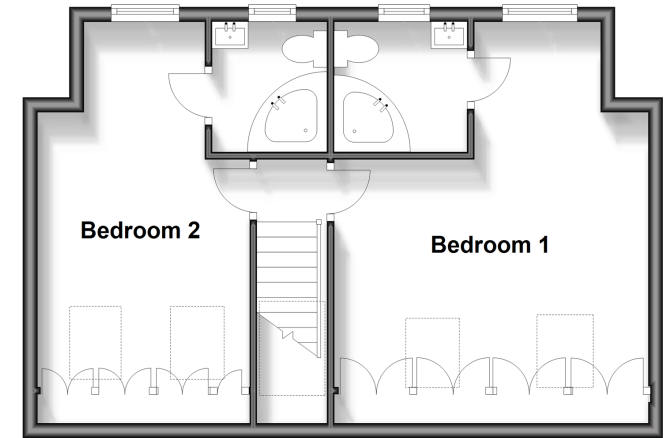
First Floor

Approx. 59.4 sq. metres (639.8 sq. feet)



Second Floor

Approx. 44.2 sq. metres (475.7 sq. feet)



Accommodation

GROUND FLOOR

Entrance Hall

Cloakroom

Lounge: 16'3 into bay x 10'3 (4.96m x 3.13m)

Kitchen/Diner: 22'8 x 9'6 (6.91m x 2.90m)

Family Area: 18'0 x 8'11 (5.49m x 2.72m)

FIRST FLOOR

Landing

Bedroom 3: 13'5 x 10'11 (4.09m x 3.33m)

En-Suite Shower Room

Bedroom 4: 11'4 x 9'10 (3.46m x 3.00m)

Bedroom 5: 11'0 x 9'10 (3.36m x 3.00m)

Bedroom 6: 9'3 x 9'0 (2.82m x 2.75m)

Bathroom

SECOND FLOOR

Landing

Bedroom 1: 16'8 x 13'10 (5.08m x 4.22m)

En-Suite Shower Room

Bedroom 2: 16'10 x 9'9 (5.13m x 2.97m)

En-Suite Shower Room

OUTSIDE

Rear Garden

Garage & Large Driveway



Main features

- Beautifully appointed modern detached family house
- Extended and improved throughout
- Impressive high specification loft conversion
- Garage and extended driveway for 5 cars
- Close to Discovery school, sports park & woodland walks



Nearest Schools

Primary Schools: The Discovery School 0.0 miles, More Park Catholic Primary 0.8 miles, Kings Hill School 0.8 miles
Secondary Schools: The Malling School 1.9 miles, Grange Park School 2.1 miles, Bower Grove School 3.0 miles



Transport Information

Train Stations: West Malling 0.7 miles, East Malling 2.1 miles, East Farleigh 2.8 miles



Address

Atlas Close, Kings Hill, West Malling, Kent, ME19



Directions

For directions to this property please contact us.



Wards
Helping you move forwards

Call Kings Hill Branch 01732 222211 ■ wardsof Kent.co.uk



- Legal advice should be taken to verify fixtures/fittings, planning, alterations and/or lease details
- Appliances & services are untested, dimensions are approximate and floor plans are not to scale
- Through a Homewise Home For Life Plan people aged 60+ can secure this property for up to 59% less, by purchasing a Lifetime Lease.

EPC RATING

CURRENT: B(32) POTENTIAL: B(33)

12404990/20240522/NR/NR