



Guide Price
£550,000

Freehold

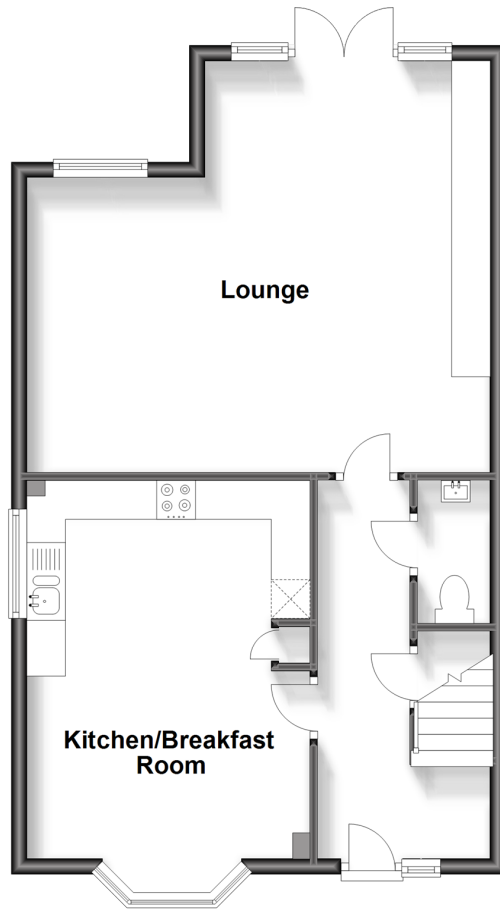
4x  2x  1x 

**Arditi Walk, Kings Hill,
West Malling, Kent,
ME19**

Wards
Helping you move forwards

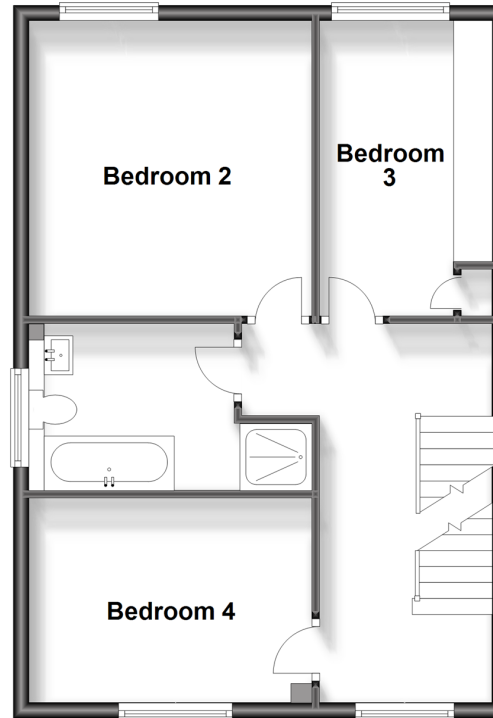
Ground Floor

Approx. 58.3 sq. metres (627.3 sq. feet)



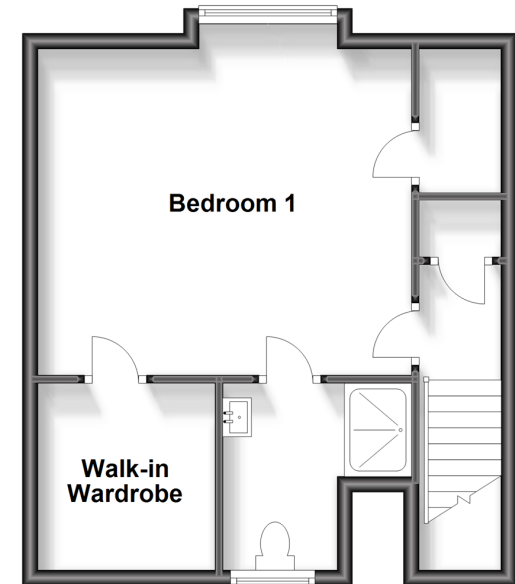
First Floor

Approx. 52.7 sq. metres (566.8 sq. feet)



Second Floor

Approx. 39.6 sq. metres (426.0 sq. feet)



Accommodation

GROUND FLOOR

Entrance Hall

Cloakroom

Kitchen/Breakfast Room: 15'7 x 12'0
(4.75m x 3.66m)

Lounge: 19'7 x 17'4 (5.97m x 5.29m)

FIRST FLOOR

Landing

Bedroom 2: 12'6 x 12'1 (3.81m x 3.69m)

Bedroom 3: 12'6 x 7'3 (3.81m x 2.21m)

Bedroom 4: 12'1 x 7'8 (3.69m x 2.34m)

Bathroom

SECOND FLOOR

Landing

Bedroom 1: 15'9 x 13'9 (4.80m x 4.19m)

Walk-in Wardrobe

En-Suite Shower Room

OUTSIDE

Front & Rear Gardens

Garage & Driveway



Main features

- Substantial 2015 Crest Nicholson built modern 4 bedroom semi-detached house
- Deceptively spacious & high specification accommodation
- Existing NHBC guarantee for peace of mind
- Quiet cul-de-sac setting close to schools & woodland walks
- A chain free sale with a highly motivated seller awaits



Nearest Schools

Primary Schools: The Discovery School 0.2 miles, Kings Hill School 0.8 miles, Valley Invicta Primary 0.8 miles
Secondary Schools: The Malling School 1.3 miles, Grange Park School 1.9 miles, Aylesford School - Sports College 2.6 miles



Transport Information

Train Stations: West Malling 1.1 miles, East Malling 1.2 miles, Watlington 1.4 miles



Address

Arditi Walk, Kings Hill, West Malling, Kent, ME19



Directions

For directions to this property please contact us.



Call Kings Hill Branch 01732 222211 ■ wardsofkent.co.uk



■ Legal advice should be taken to verify fixtures/fittings, planning, alterations and/or lease details ■ Appliances & services are untested, dimensions are approximate and floor plans are not to scale



12404843/20240711/CH/NR