



Guide Price
£500,000

Freehold

4x  2x  1x 

**Laxton Walk, Kings Hill,
West Malling, Kent,
ME19**

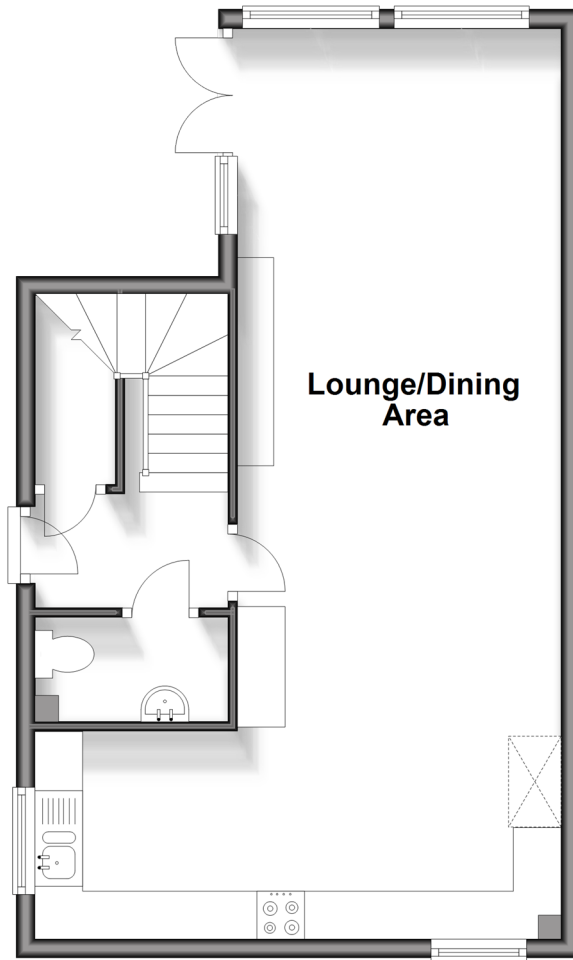
OVER 60?

Secure this property
for up to **59% less!**

Wards
Helping you move forwards

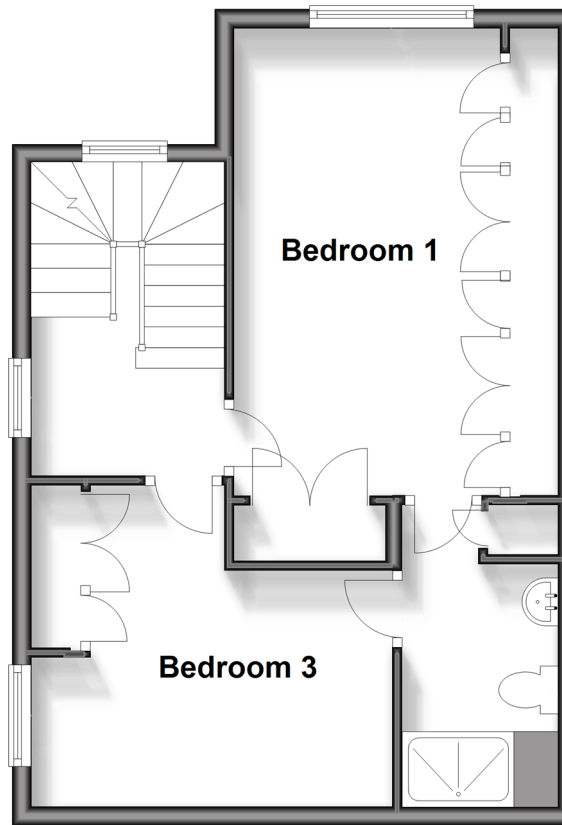
Ground Floor

Approx. 46.5 sq. metres (501.0 sq. feet)



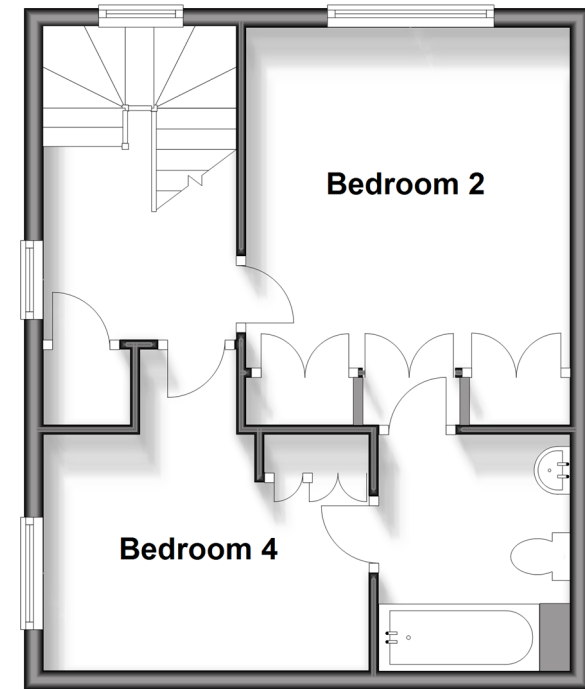
First Floor

Approx. 41.8 sq. metres (449.9 sq. feet)



Second Floor

Approx. 37.4 sq. metres (402.5 sq. feet)



Accommodation

GROUND FLOOR

Entrance Hall

Cloakroom

Lounge/Dining Area: 24'1 x 11'9 (7.35m x 3.58m)

Kitchen Area: 18'0 x 7'2 (5.49m x 2.19m)

FIRST FLOOR

Landing

Bedroom 1: 18'2 x 9'0 (5.54m x 2.75m)

Jack & Jill Shower Room

Bedroom 3: 12'3 x 11'2 (3.74m x 3.41m)

SECOND FLOOR

Landing

Bedroom 2: 11'9 x 11'2 (3.58m x 3.41m)

Jack & Jill Bathroom

Bedroom 4: 11'2 x 8'0 (3.41m x 2.44m)

OUTSIDE

Rear Garden

Car Barn & Driveway



Main features

- Greatly improved modern semi-detached family house
- Quiet walkway setting with no passing traffic
- The ideal layout for modern family living
- Close to Golf course & Liberty Square and its vast amenities
- Car barn & driveway with EV charger



Nearest Schools

Primary Schools: Kings Hill School 0.1 miles, Valley Invicta Primary 0.3 miles, The Discovery School 0.7 miles
Secondary Schools: The Malling School 2.0 miles, Grange Park School 2.3 miles, Aylesford School - Sports College 3.4 miles



Transport Information

Train Stations: Wateringbury 1.4 miles, West Malling 1.5 miles, East Malling 1.9 miles



Address

Laxton Walk, Kings Hill, West Malling, Kent, ME19



Directions

For directions to this property please contact us.



Wards
Helping you move forwards

Call Kings Hill Branch 01732 22211 ■ wardsof Kent.co.uk



- Legal advice should be taken to verify fixtures/fittings, planning, alterations and/or lease details
- Appliances & services are untested, dimensions are approximate and floor plans are not to scale
- Through a Homewise Home For Life Plan people aged 60+ can secure this property for up to 59% less, by purchasing a Lifetime Lease.

EPC RATING	CURRENT:	POTENTIAL:
	C(79)	B(87)

12404940/20240518/NR/NR