



OVER 60?

Secure this property
for up to **59% less!**

Price

£600,000

Freehold

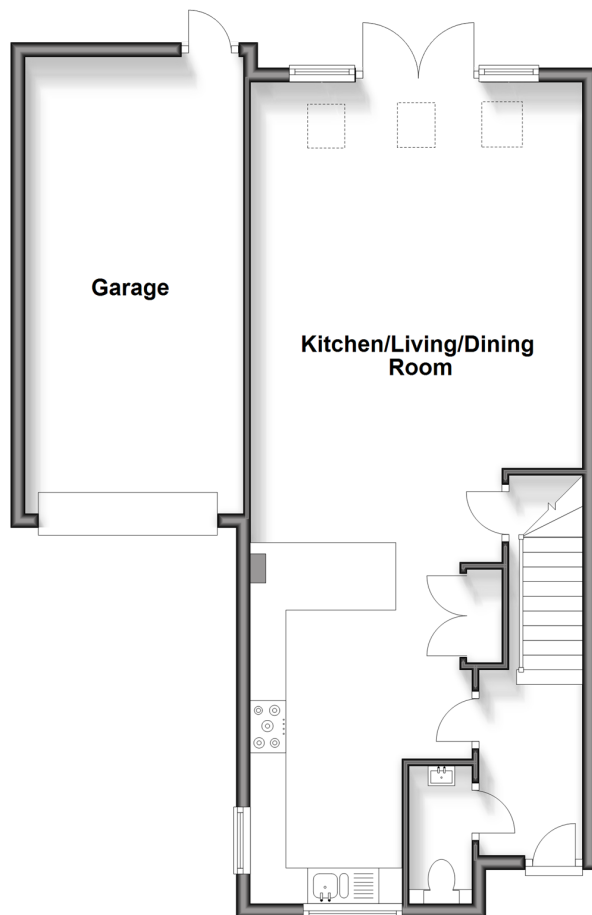
5x  3x  1x 

**Ruton Square, Kings Hill,
West Malling, Kent,
ME19**

Wards
Helping you move forwards

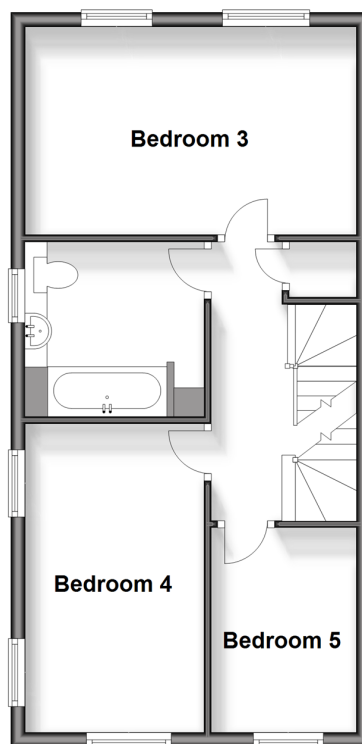
Ground Floor

Approx. 72.9 sq. metres (784.2 sq. feet)



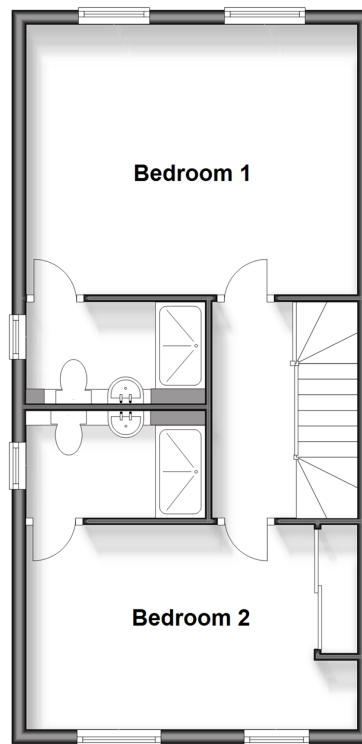
First Floor

Approx. 46.1 sq. metres (496.7 sq. feet)



Second Floor

Approx. 46.2 sq. metres (497.8 sq. feet)



Accommodation

GROUND FLOOR

Entrance Hall

Cloakroom

Kitchen/Living/Dining Room: 37'9 x 15'3
(11.51m x 4.65m)

FIRST FLOOR

Landing

Bedroom 3: 15'1 x 9'6 (4.60m x 2.90m)

Bedroom 4: 14'2 x 8'4 (4.32m x 2.54m)

Bedroom 5: 9'4 x 6'9 (2.85m x 2.06m)

Bathroom

SECOND FLOOR

Landing

Bedroom 1: 15'3 x 12'6 (4.65m x 3.81m)

En-Suite Shower Room

Bedroom 2: 15'3 x 9'5 (4.65m x 2.87m)

En-Suite Shower Room

OUTSIDE

Front & Rear Gardens

Garage: 21'4 x 10'0 (6.51m x 3.05m)

Driveway



Main features

- Generous & exciting modern detached family house
- Excellent rail & road commuter links
- High specification home with outstanding facilities
- School, Liberty Square & sports park all close by
- Peace of mind with remaining NHBC guarantee



Nearest Schools

Primary Schools: Valley Invicta Primary 0.3 miles, Kings Hill School 0.5 miles, The Discovery School 0.7 miles
Secondary Schools: The Malling School 1.6 miles, Grange Park School 1.7 miles, Aylesford School - Sports College 3.0 miles



Transport Information

Train Stations: West Malling 1.0 miles, East Malling 1.6 miles, Watlington 1.8 miles



Address

Ruton Square, Kings Hill, West Malling, Kent, ME19



Directions

For directions to this property please contact us.



Wards
Helping you move forwards

Call Kings Hill Branch 01732 222211 ■ wardsofkent.co.uk



■ Legal advice should be taken to verify fixtures/fittings, planning, alterations and/or lease details ■ Appliances & services are untested, dimensions are approximate and floor plans are not to scale
■ Through a Homewise Home For Life Plan people aged 60+ can secure this property for up to 59% less, by purchasing a Lifetime Lease.



12404697/20240325/SG/NR