



OVER 60?

Secure this property
for up to **59% less!**

Guide Price
£550,000

Freehold

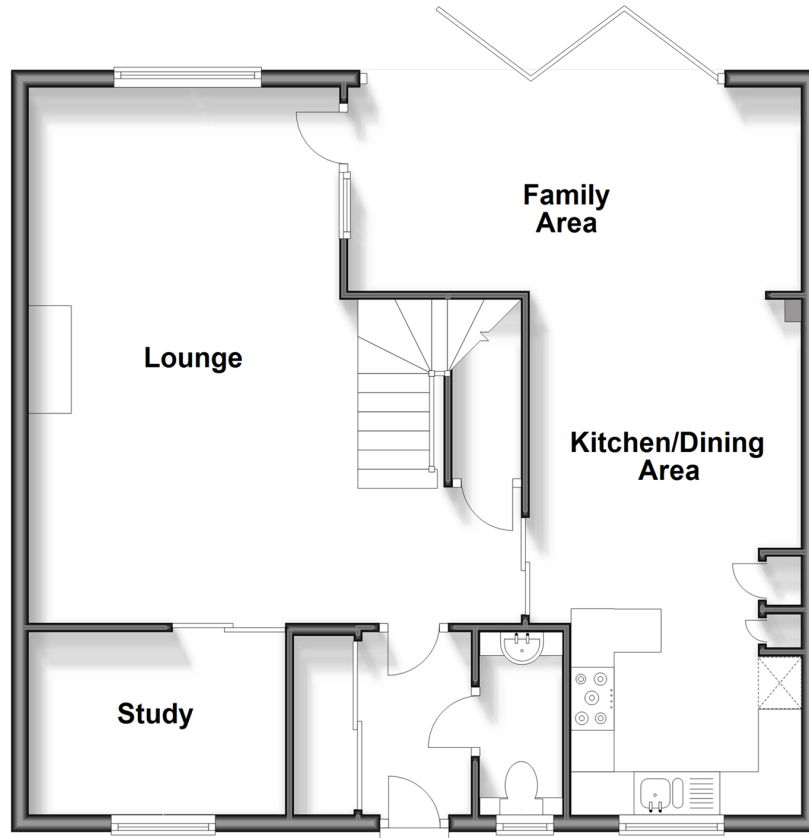
4x  2x  2x 

**Shoemith Lane, Kings
Hill, West Malling, Kent,
ME19**

Wards
Helping you move forwards

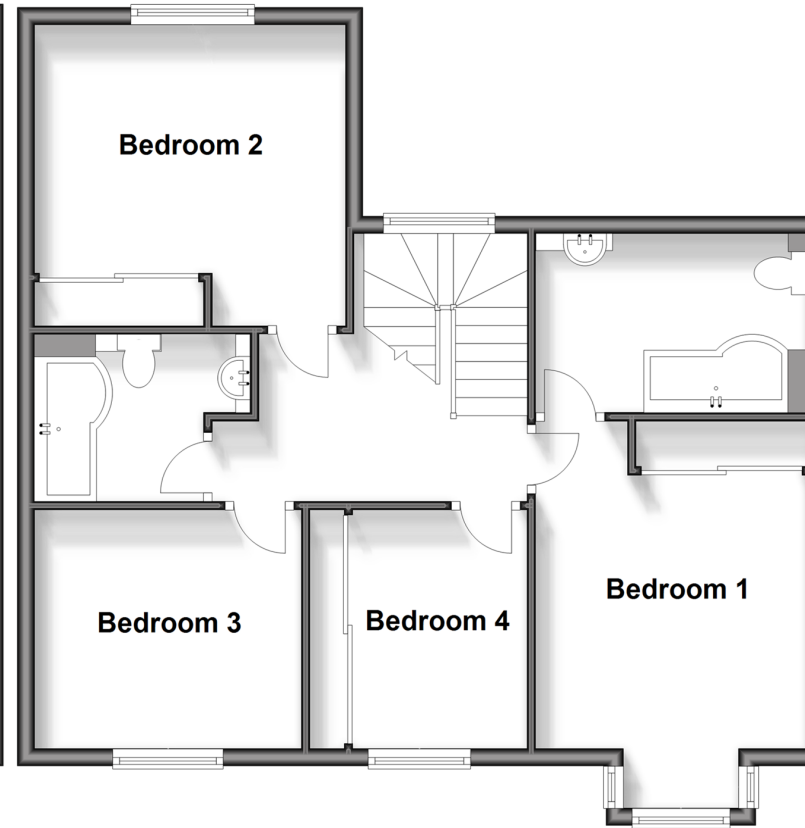
Ground Floor

Approx. 74.8 sq. metres (805.3 sq. feet)



First Floor

Approx. 62.9 sq. metres (677.0 sq. feet)



Accommodation

GROUND FLOOR

Entrance Hall

Cloakroom

Lounge: 20'2 x 16'1 (6.15m x 4.91m)

Kitchen/Dining Area: 20'0 x 9'0 (6.10m x 2.75m)

Family Area: 16'1 x 8'0 (4.91m x 2.44m)

Study: 9'8 x 6'11 (2.95m x 2.11m)

FIRST FLOOR

Landing

Bedroom 1: 12'7 x 10'6 (3.84m x 3.20m)

En-Suite Bathroom

Bedroom 2: 11'10 x 11'1 (3.61m x 3.38m)

Bedroom 3: 10'2 x 8'9 (3.10m x 2.67m)

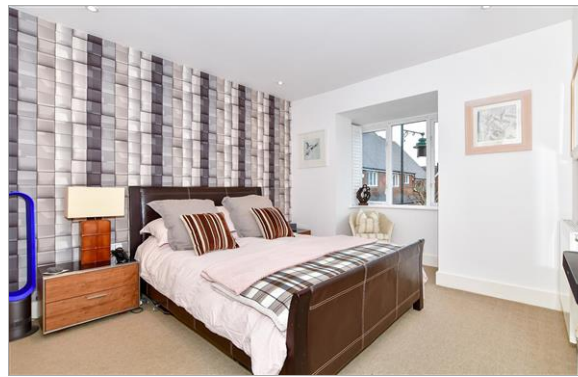
Bedroom 4: 8'9 x 8'3 (2.67m x 2.52m)

Bathroom

OUTSIDE

Front & Rear Gardens

Garage & Driveway



Main features

- Terraced house with incredible open plan accommodation
- Study/office for those working from home
- Quiet cul-de sac within the exclusive 'OAKS HAMLET' development
- Generous landscaped rear garden
- Garage & driveway found close to the property



Nearest Schools

Primary Schools: The Discovery School 0.4 miles, Valley Invicta Primary 0.4 miles, Kings Hill School 1.5 miles
Secondary Schools: St Augustine Academy 4.0 miles, Oakwood Park Grammar School 4.0 miles, Grange Park School 4.5 miles



Transport Information

Train Stations: Barming 3.2 miles, Aylesford 3.3 miles, East Farleigh 3.3 miles



Address

Shoesmith Lane, Kings Hill, West Malling, Kent, ME19



Directions

For directions to this property please contact us.



Wards
Helping you move forwards

Call Kings Hill Branch 01732 222211 ■ wardsofkent.co.uk



■ Legal advice should be taken to verify fixtures/fittings, planning, alterations and/or lease details ■ Appliances & services are untested, dimensions are approximate and floor plans are not to scale
■ Through a Homewise Home For Life Plan people aged 60+ can secure this property for up to 59% less, by purchasing a Lifetime Lease.



12404960/20240305/NR/NR