



OVER 60?

Secure this property
for up to **59% less!**

Price

£600,000

Freehold

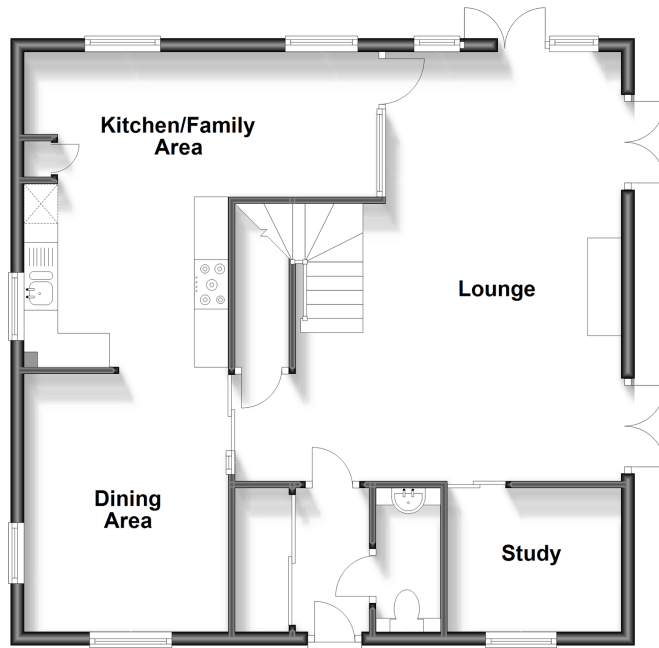
4x  2x  3x 

**Shoesmith Lane, Kings
Hill, West Malling, Kent,
ME19**

Wards
Helping you move forwards

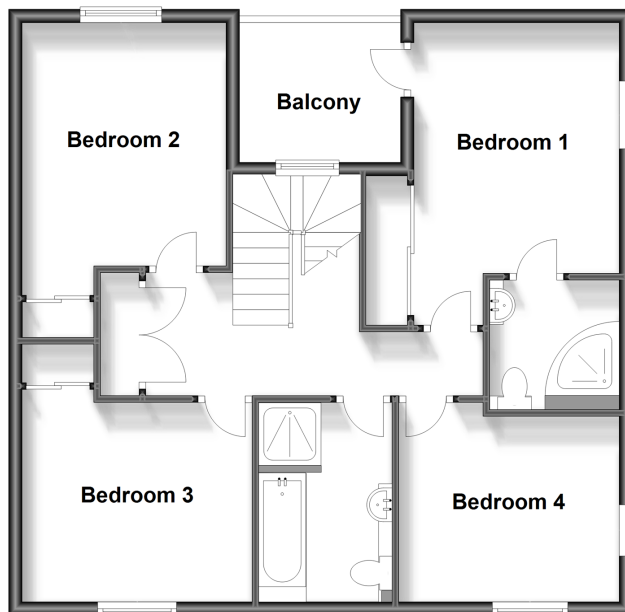
Ground Floor

Approx. 75.7 sq. metres (815.2 sq. feet)



First Floor

Approx. 69.7 sq. metres (750.5 sq. feet)



Accommodation

GROUND FLOOR

Entrance Hall

Cloakroom

Utility Cupboard

Lounge: 20'0 x 15'11 (6.10m x 4.85m)

Kitchen/Family Area: 16'10 at widest point x 14'11 (5.13m x 4.55m)

Dining Area : 13'0 x 7'0 (3.97m x 2.14m)

Study: 9'0 x 7'0 (2.75m x 2.14m)

FIRST FLOOR

Landing

Bedroom 1: 12'0 x 10'0 (3.66m x 3.05m)

En-Suite Shower Room

Balcony

Bedroom 2: 12'0 x 11'0 (3.66m x 3.36m)

Bedroom 3: 10'0 x 9'0 (3.05m x 2.75m)

Bedroom 4: 10'0 x 9'0 (3.05m x 2.75m)

Bathroom

OUTSIDE

Front & Side Gardens

Garage & Driveway



Main features

- Highly sought after & prestigious gated setting
- Open plan contemporary design with useful study
- Close to woodland walks & the ever popular Discovery school
- Garage, driveway & secluded side garden
- Chain free so no sale complications



Nearest Schools

Primary Schools: The Discovery School 0.4 miles, Valley Invicta Primary 1.4 miles, Kings Hill School 1.5 miles
Secondary Schools: St Augustine Academy 4.0 miles, Oakwood Park Grammar School 4.0 miles, Grange Park School 4.5 miles



Transport Information

Train Stations: West Malling 1.2 miles, Barming 3.2 miles, Aylesford 3.3 miles,



Address

Shoesmith Lane, Kings Hill, West Malling, Kent, ME19



Directions

For directions to this property please contact us.



Call Kings Hill Branch 01732 222211 ■ wardsofkent.co.uk



- Legal advice should be taken to verify fixtures/fittings, planning, alterations and/or lease details
- Appliances & services are untested, dimensions are approximate and floor plans are not to scale
- Through a Homewise Home For Life Plan people aged 60+ can secure this property for up to 59% less, by purchasing a Lifetime Lease.



12404904/20231123/SG/NR