



## Foxwood Road Blackheath **£695,000 Freehold**

Gough Cooper built Terraced House located in a popular in this development within a short walking distance of Blackheath Village. Lovely South facing Garden with the garage located at the bottom of the garden. In need of modernisation this lovely house presents an ideal opportunity to improve and extend subject to planning permissions.

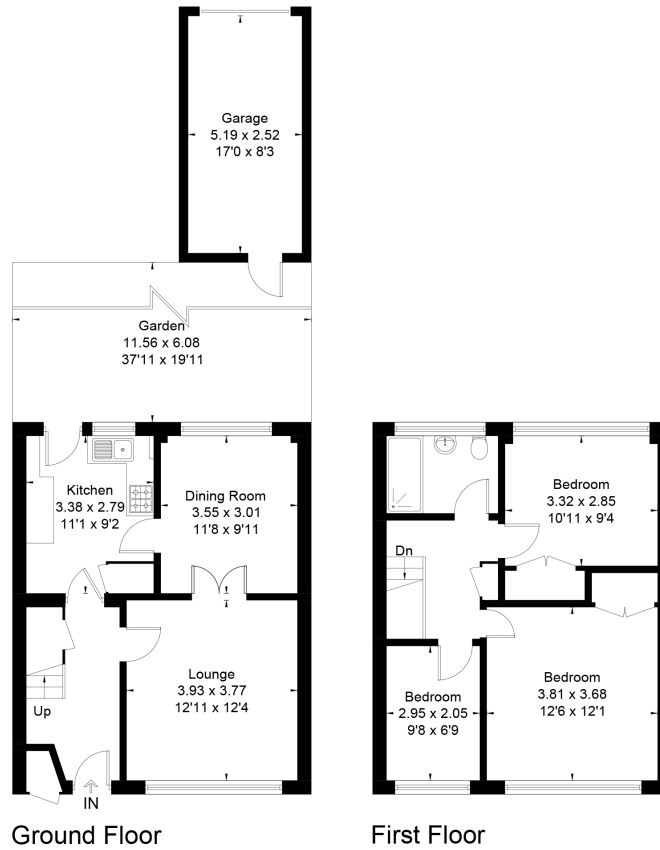
# KERSHAW'S

Three Bedrooms Family Bathroom Interconnecting Living and Dining Rooms Kitchen Gas Central heating. Within easy reach of all the amenities of Blackheath Village with its array of bars restaurants shops and Mainline Station offering a fast and frequent service to the City West End and Victoria and a one stop change for the DLR to Canary Wharf.



# KERSHAW'S

Approximate Floor Area = 89.4 sq m / 962 sq ft  
Garage = 13 sq m / 140 sq ft  
Total = 102.4 sq m / 1102 sq ft  
(Excluding External Store)



This floor plan has been drawn in accordance with RICS Property Measurement 2nd edition.  
All measurements, including the floor area, are approximate and for illustrative purposes only. @fourwalls-group.com #80475