

## Shooters Hill Road Blackheath SE3 **£7,500 per calendar month**

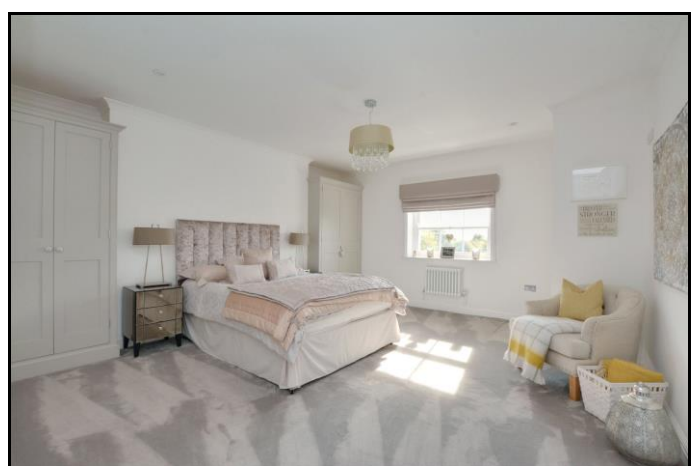
Rarely does one see a house of such scale and luxury come to the rental market. This beautiful five storey period residence set behind secure gates provides spacious, elegant, well planned and proportioned interior that has been refurbished to the highest specification throughout. Fully furnished and equipped with superb fixtures fittings appliances and sanitaryware. Set well back from the road and convenient for Blackheath Village with its array of shops restaurants bars and mainline station to the City, west end and Victoria and a one stop to the dlr for Canary Wharf. Both the open spaces of Blackheath and the gates of Royal Greenwich Park are a short walk. Easy access to the A102 for Canary Wharf and City Airport and to Kent and M25. The area is well served with schools in both the private and public sectors, with school buses passing nearby for Colfes, Eltham College and the Dulwich schools.

# KERSHAW'S

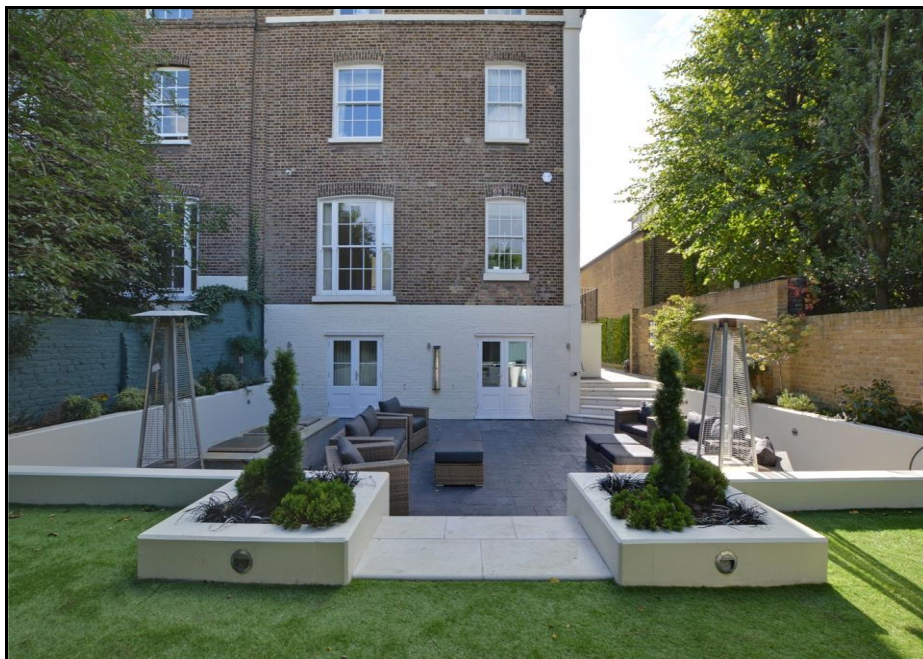
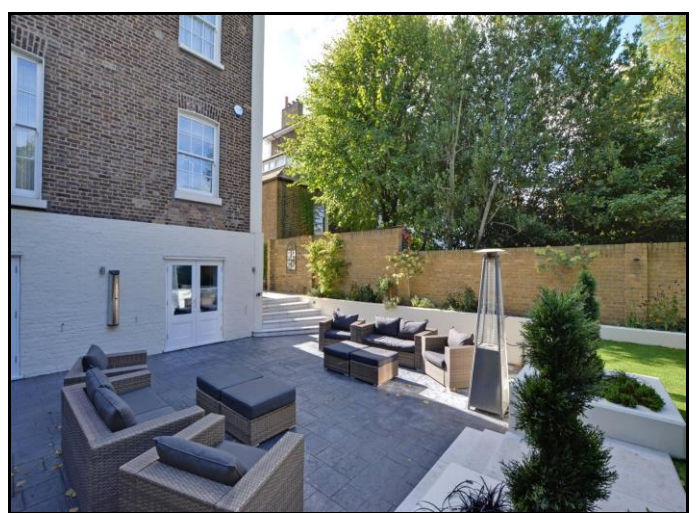
Comprising an open plan living room dining room and superb luxury fully equipped kitchen on the hall floor. Master bedroom with ensuite dressing room and luxurious bathroom. Seven further bedrooms, three luxury bathrooms, one of which is ensuite and two cloakrooms. To the lower ground floor is the cinema room, office, huge laundry room and integral garage that has been used as a gym. To the exterior is a lovely landscaped enclosed garden with deep dining terrace and fire-pit. To the front ample secure off-road parking to the large driveway. Double glazed throughout. State of the art security system.



# KERSHAW'S



# KERSHAW'S



# KERSHAW'S

