

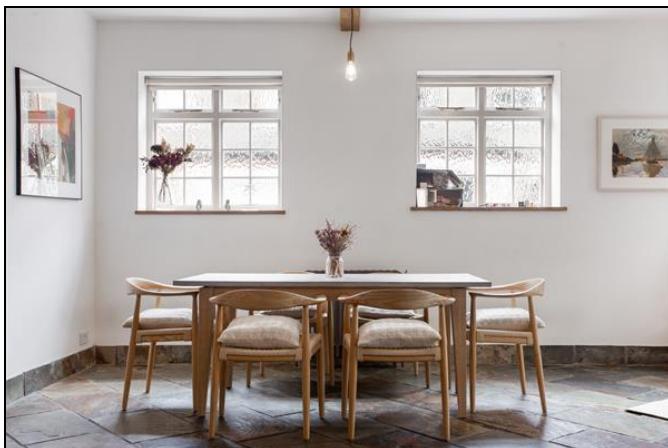


The Bell House, Camden Row Blackheath **£2.5 Million Freehold**

Unique detached former Coach House with an abundance of character retaining many period features blending both reclaimed and contemporary styling detail. Located in a quiet, prime sought after street in the heart of Blackheath Village yet a few steps to acres of the open heath, the shops, restaurants, cafes and bars and Mainline Station providing fast service to City, West End & Victoria and a one stop to DLR for Canary Wharf.

KERSHAW'S

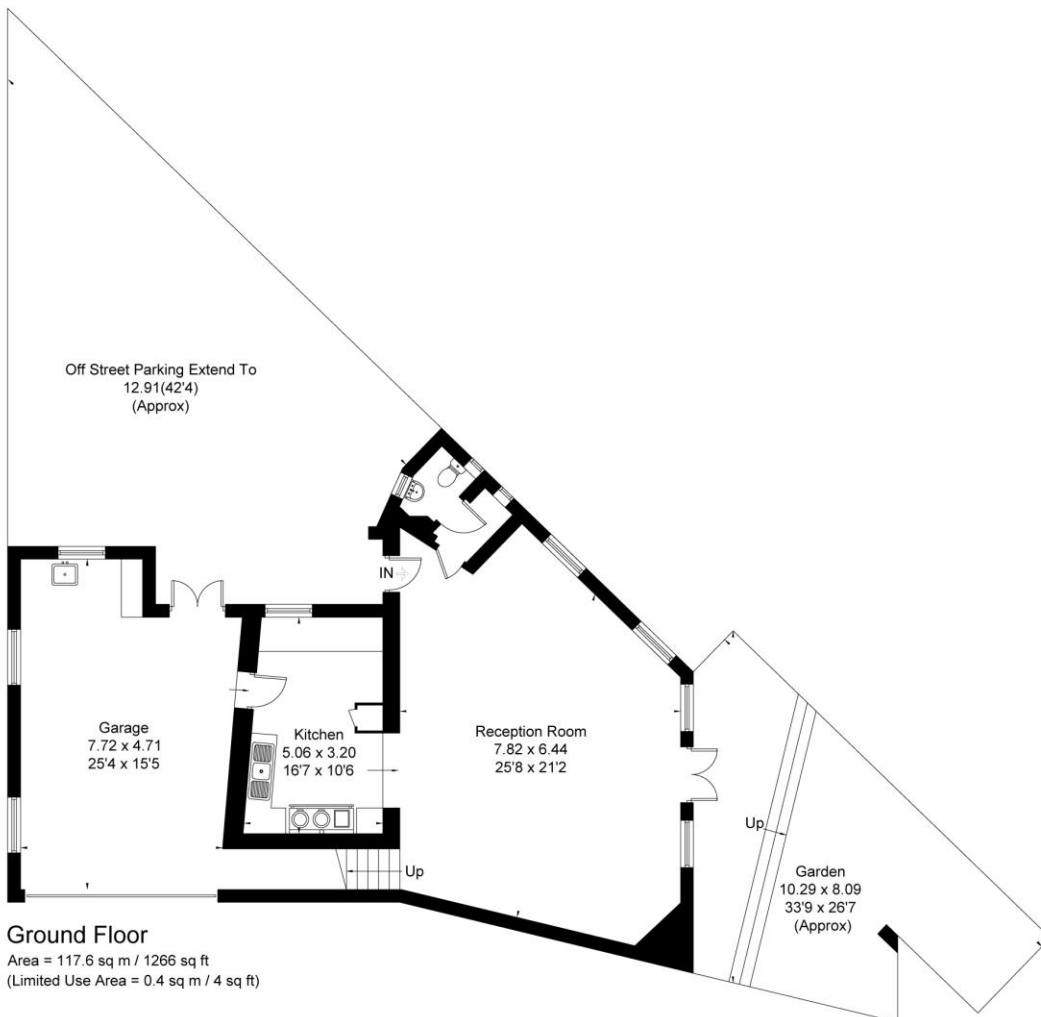
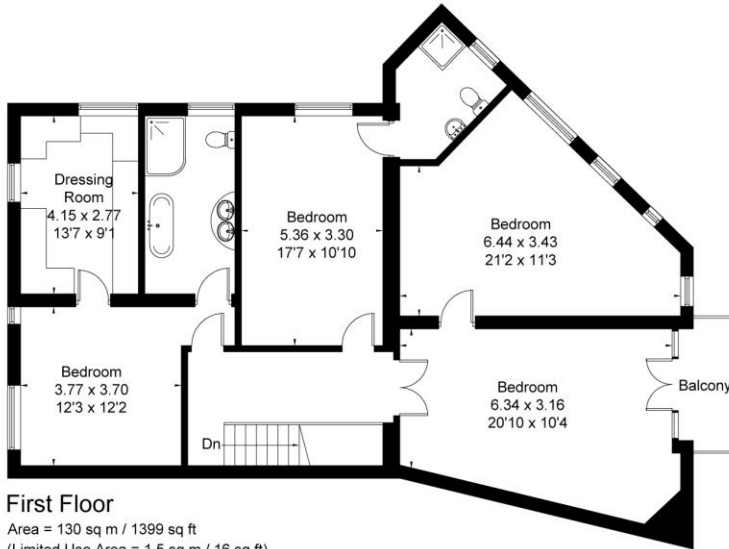
The spacious interior has a vast open plan living dining family Room which in turn opens to the country style kitchen with Aga. Master Bedroom, walk-in wardrobe and EnSuite Bathroom, Three Further Double Bedrooms and Shower Room. Ground Floor Cloakroom, huge Garage and off road Parking.



KERSHAW'S



Approximate Area = 247.6 sq m / 2665 sq ft (Including Garage)
Including Limited Use Area (1.9 sq m / 20 sq ft)



Surveyed and drawn in accordance with the International Property Measurement Standards (IPMS 2: Residential)
fourwalls-group.com 233286

KERSHAW'S

