

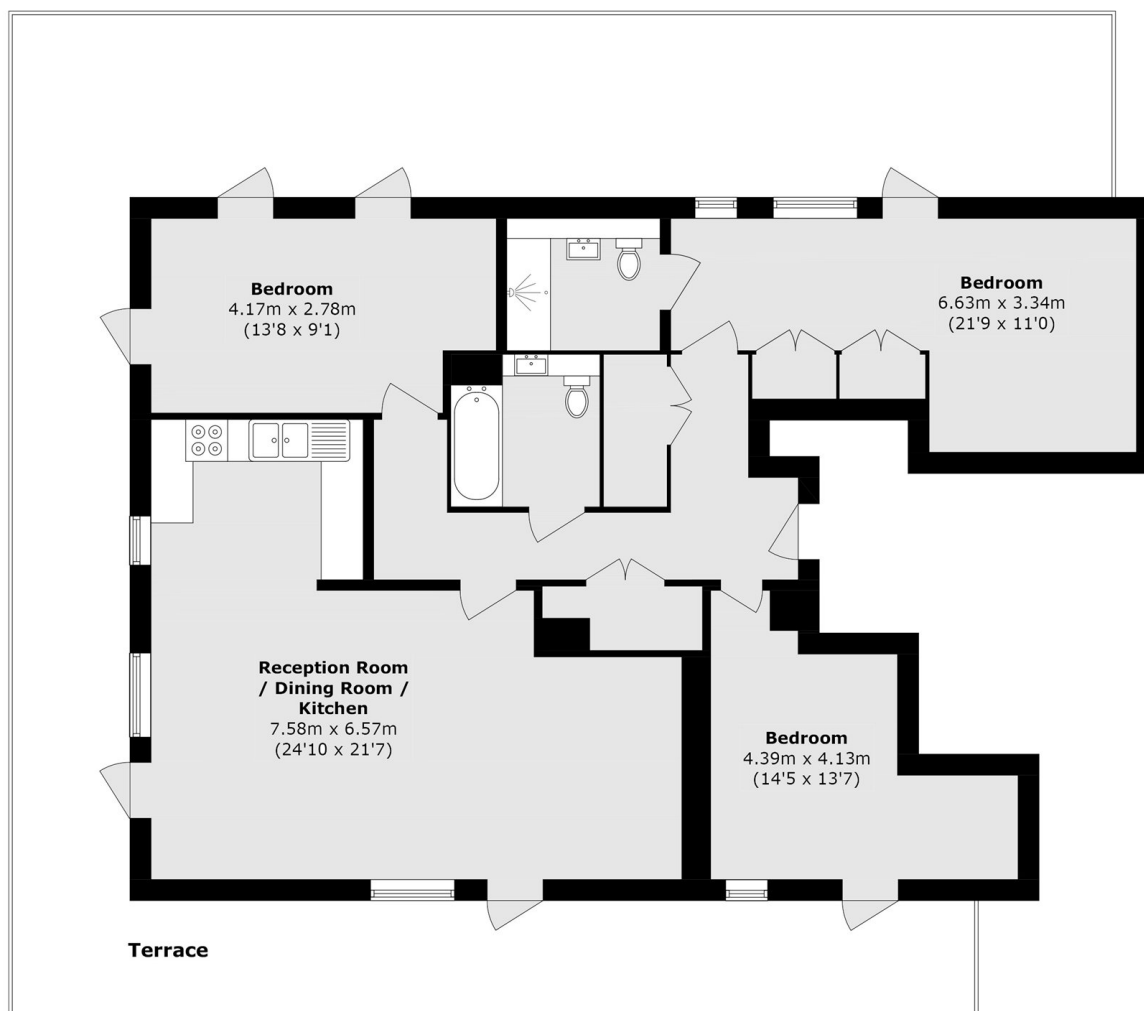


MOULDING LANE, SE14

£675,000

A spacious three bedroom, two bathroom apartment set within the popular Quartz Apartments. This property provides a large, bright reception and open plan kitchen with built in appliances and a modern design, a terrace which covers three sides of the property, three double bedrooms, the primary of which features built in storage and an en suite.

- Three Double Bedrooms
- Two Bathrooms
- Wrap-Around Terrace
- Built In Storage
- Far Reaching Views
- Modern Development



Total area (approx.): 108.2 sq. m (1164.6 sq. ft)

Terrace area (approx.): 80.9 sq. m (870.8 sq. ft)

LiFE RESIDENTIAL

36 Millharbour, London, E14

9JS

Sales: 020 3668 1033

Lettings: 020 3668 1030

Energy Rating: . We aim to make our particulars both accurate and reliable. However they are not guaranteed; nor do they form part of an offer or contract. If you require clarification on any points then please contact us, especially if you're traveling some distance to view. Please note that appliances and heating systems have not been tested and therefore no warranties can be given as to their good working order.