

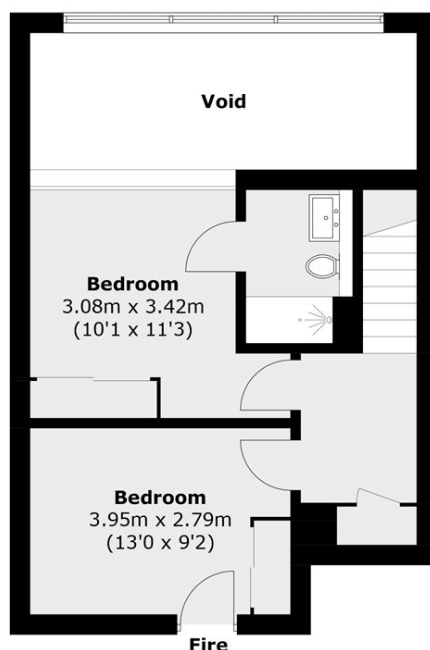


## BALTIMORE WHARF, E14

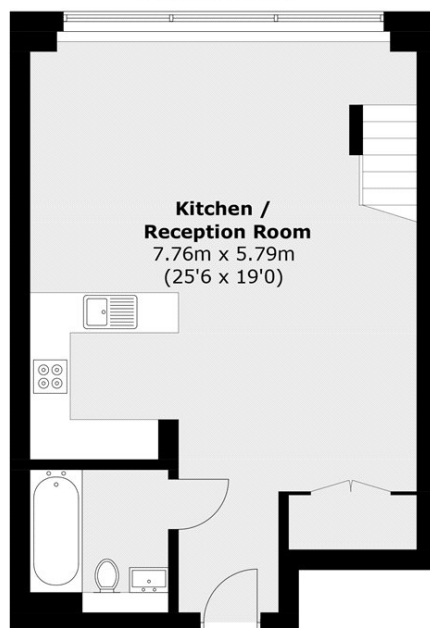
**£500,000**

A two bedroom, mezzanine style property located in Baltimore Wharf. The lower level consists of a bright, open plan kitchen/reception area with floor-to-ceiling windows for plenty of natural light and a fully fitted bathroom, the upper level also benefits from these large windows and provides two bedrooms and a second bathroom.

- One Bedroom
- Mezzanine Style
- Gym
- Parking
- Swimming Pool
- 24 Hour Concierge



### First Floor



### Ground Floor

Total area (approx.): 83.6 sq. m (898.8 sq. ft)  
(Excluding Void)

### LiFE RESIDENTIAL

36 Millharbour, London, E14

9JS

Sales: 020 3668 1033

Lettings: 020 3668 1030

Energy Rating: C. We aim to make our particulars both accurate and reliable. However they are not guaranteed; nor do they form part of an offer or contract. If you require clarification on any points then please contact us, especially if you're traveling some distance to view. Please note that appliances and heating systems have not been tested and therefore no warranties can be given as to their good working order.