

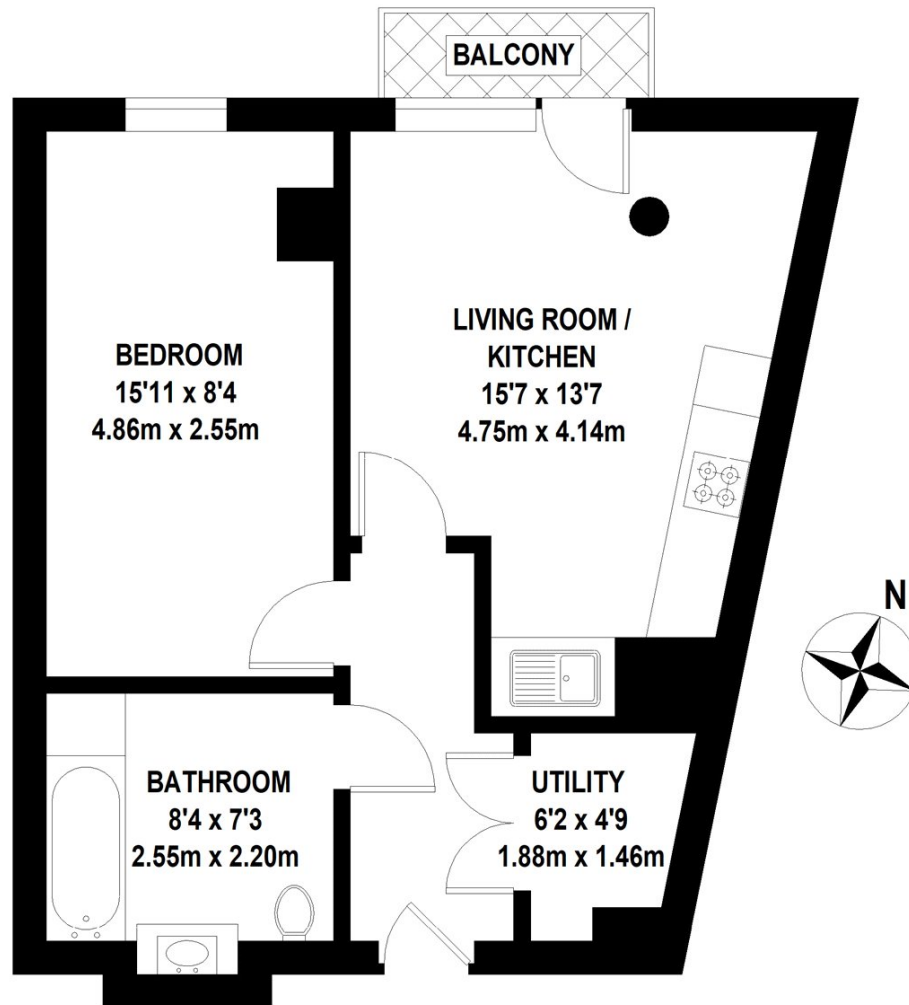


LINCOLN PLAZA, E14

£425,000

A one bedroom apartment located on the twenty-third floor of Lincoln Plaza. This property features a modern kitchen/reception with wooden flooring and access to a private balcony, a double bedroom and a family bathroom.

- One Double Bedroom
- Cinema Room
- Gym
- 24hr Concierge
- Winter Garden
- Lounge



TOTAL APPROX. FLOOR AREA 482 SQ.FT. (44.80 SQ.M)

Whilst every attempt has been made to ensure the accuracy of the floor plan contained here, measurements of door, windows, rooms and any other items are approximate and no responsibility is taken for any error, omission, or mis-statement. This plan is for illustrative purposes only and should be used as such by any prospective purchaser. The services, systems and appliances shown have not been tested and no guarantee as to their operability or efficiency can be given © 2023 (ID968864)

LiFE RESIDENTIAL

36 Millharbour, London, E14

9JS

Sales: 020 3668 1033

Lettings: 020 3668 1030

Energy Rating: B. We aim to make our particulars both accurate and reliable. However they are not guaranteed; nor do they form part of an offer or contract. If you require clarification on any points then please contact us, especially if you're traveling some distance to view. Please note that appliances and heating systems have not been tested and therefore no warranties can be given as to their good working order.