

THOMAS BROWN

ESTATES



20 Station Approach, Chelsfield, BR6 6EU

Offers IEO: £475,000

- 3 Bedroom Townhouse, No Forward chain
- Well Located for Chelsfield Station & Locals Shops
- Integral Garage & Off Street Parking
- STPP Potential to Convert Garage





Property Description

****CALL FOR IMMEDIATE ACCESS**** Thomas Brown Estates are delighted to offer this three bedroom townhouse being offered to the market with no forward chain, boasting a fantastic location opposite Chelsfield Station and moments from the local shops on Windsor Drive. The ground floor comprises; entrance hall, bedroom three, utility room and a WC to the ground floor. To the first floor is the spacious dual aspect lounge/dining room and kitchen. To the second floor are two bedrooms and the family bathroom. Externally there is a rear garden mainly laid to lawn with a patio perfect for alfresco dining and entertaining, and a drive to the front. Station Approach is well located for local schools including Warren Road Primary, The Highway and St. Olaves, shops, bus routes and Chelsfield mainline station. Please call Thomas Brown Estate Agents in Orpington to arrange a viewing.



ENTRANCE HALL

Door to front, laminate flooring, radiator.

BEDROOM 3

12' 0" x 8' 05" (3.66m x 2.57m) Double glazed window to rear, laminate flooring, radiator.

UTILITY ROOM

9' 07" x 5' 10" (2.92m x 1.78m) Range of matching wall and base units with worktops over, sink and drainer, space for washing machine, space for tumble dryer, double glazed window to rear, door to rear, laminate flooring.

CLOAKROOM

Low level WC, wash hand basin, laminate flooring.

STAIRS TO FIRST FLOOR LANDING

LOUNGE/DINER

27' 10" x 11' 06" (8.48m x 3.51m) Two double glazed windows with shutters to front, double glazed window to rear, laminate flooring, radiator and covered radiator.

KITCHEN

8' 10" x 5' 09" (2.69m x 1.75m) Range of matching wall and base units with worktops over, sink and drainer, space for cooker, space for undercounter fridge, double glazed window to rear, laminate flooring.

STAIRS TO SECOND FLOOR LANDING

Carpet.

BEDROOM 1

13' 05" x 12' 11" (4.09m x 3.94m) Fitted wardrobes, two double glazed windows with shutters to front, laminate flooring, radiator.

BEDROOM 2

11' 11" x 8' 06" (3.63m x 2.59m) Built in wardrobe, double glazed window to rear, laminate flooring, radiator.

BATHROOM

Low level WC, wash hand basin, bath with shower over, airing cupboard, double glazed opaque window to rear, tiled walls, tiled flooring, heated towel rail.

OTHER BENEFITS I INCLUDE:

GARDEN

26' 03" x 16' 03" (8m x 4.95m) Patio area with rest laid to lawn.

OFF STREET PARKING

INTEGRAL GARAGE

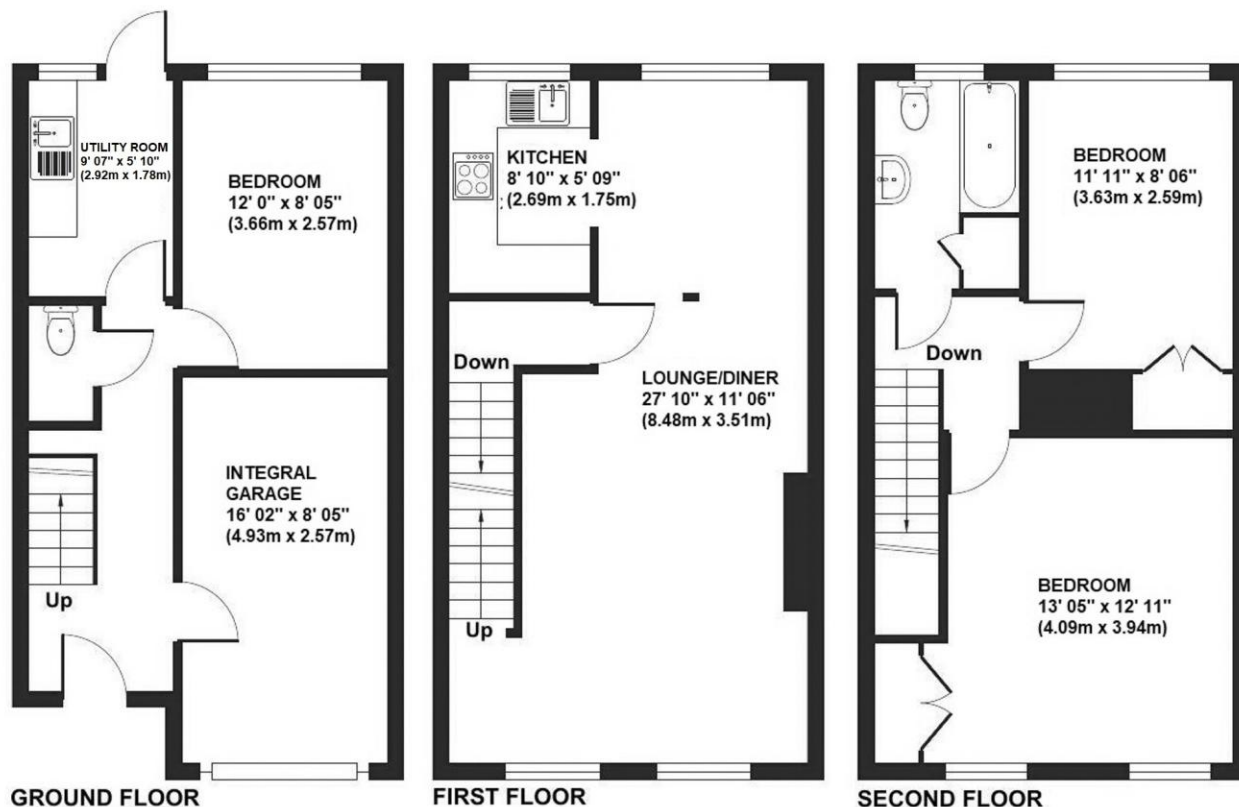
16' 02" x 8' 05" (4.93m x 2.57m) Electric up and over door to front, power and light.

DOUBLE GLAZING

CENTRAL HEATING SYSTEM

NO FORWARD CHAIN





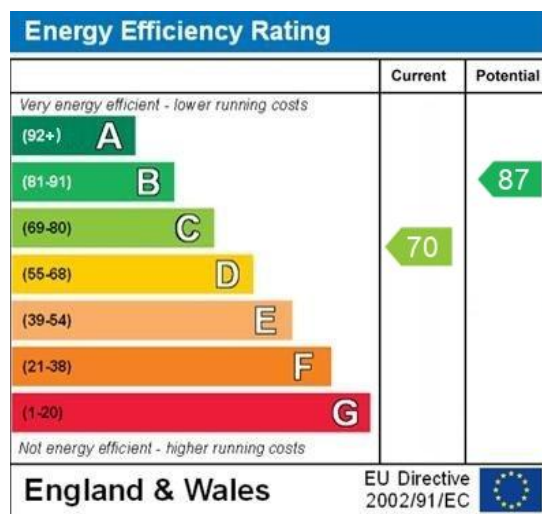
This plan is for illustration purpose only - not to scale



Construction: Standard

Council Tax Band: E

Tenure: Freehold



No statement in these details is to be relied upon as representation of fact, and purchasers should satisfy themselves by inspection or otherwise as to the accuracy of the statements contained within. These details do not constitute any part of any offer or contract. Thomas Brown Estates and their employees and agents do not have any authority to give warranty or representation whatsoever in respect of this property. These details and all statements herein are provided without any responsibility on the part of Thomas Brown Estates or the vendors.

Thomas Brown Estates have not tested the equipment or central heating system mentioned in these particulars and the purchasers are advised to satisfy themselves as to the working order and condition.

Measurements: Great care is taken when measuring, but measurements should not be relied upon for ordering carpets, equipment, etc.

The Laws of copyright protect this material. The Owner of the copyright is Thomas Brown Estates. This property sheet forms part of our database, and is protected by the database right and copyright laws. No unauthorised copying or distribution without permission.

Registered Office: Lawrence & Co, 94 Brook Street, Erith, DA8 1JF. Registered in England no. 6048974

285 High Street
Orpington
Kent
BR6 0NN

www.thomasbrownestates.co.uk
sales@thomasbrownestates.co.uk

01689 884444

Telephones Manned:
Mon-Fri: 8am – 8pm
Sat: 8am – 5pm
Sun: 10am – 4pm

THOMAS BROWN
ESTATES