



ST. ANN'S HILL, SW18

£650,000

- Four Bedrooms
- Two Bathrooms
- Victorian Conversion
- Good Condition
- Private Roof Terrace
- Energy rating: C



4



2



1

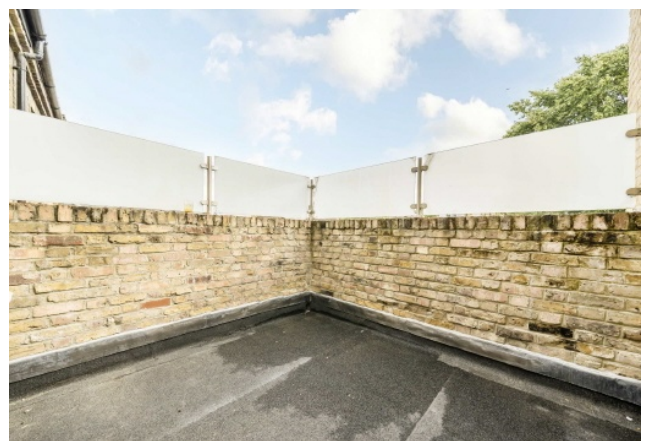


## ABOUT THE HOME

A split level four bedroom, two bathroom apartment set within a Victorian building, benefiting from a spacious terrace and being sold with no onward chain.

Accommodation comprises; kitchen with breakfast bar open plan to the reception room with dining area; all offering a generous entertaining space. The private roof terrace is accessed from the stairs to the second floor which consists of two double bedrooms and a family bathroom. A further two double bedrooms and a shower room are located on the third floor.

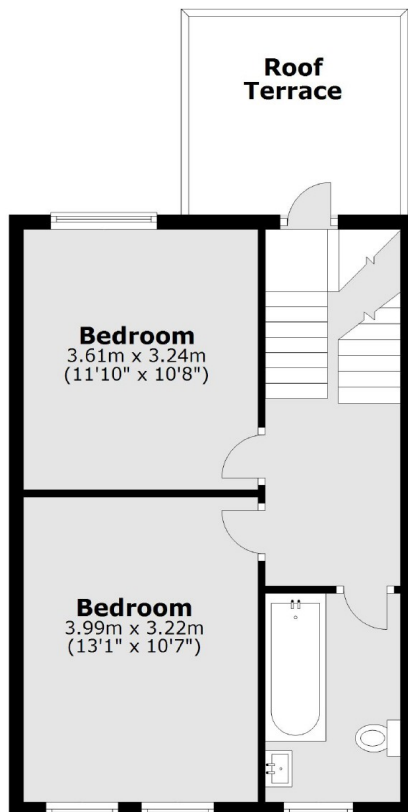
St Ann's Hill is close to the open spaces of Wandsworth Common and all of the amenities of the Southside Shopping Centre: such as a Waitrose and Virgin Active Gym. There is good transport from Wandsworth Town mainline station and numerous bus services in the area. The area is also well known for its superb schools, both state and private.



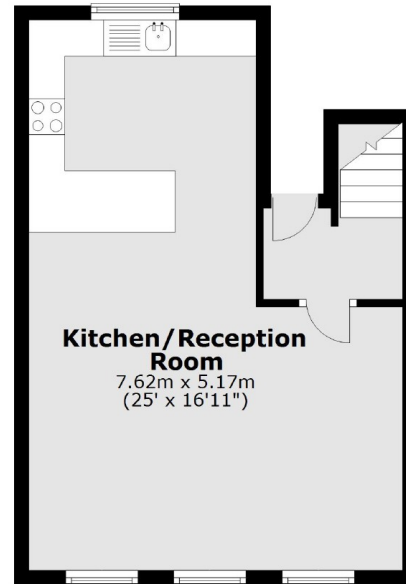




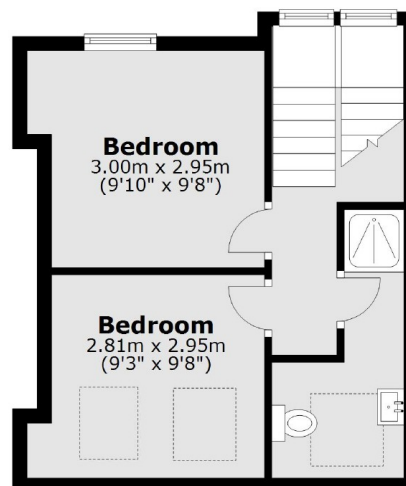
### Second Floor



### First Floor



### Third Floor



Main area: Approx. 106.6 sq. metres (1147.3 sq. feet)  
Plus roof terrace, approx. 8.4 sq. metres (89.9 sq. feet)

#### JACKSONS WANDSWORTH

507 Old York Road, London,  
SW18 1TF  
Sales: 020 8875 8890  
Lettings: 020 8875 8899

Energy Rating: C We aim to make our particulars both accurate and reliable. However they are not guaranteed; nor do they form part of an offer or contract. If you require clarification on any points then please contact us, especially if you're traveling some distance to view. Please note that appliances and heating systems have not been tested and therefore no warranties can be given as to their good working order.