



Fitzhugh Grove, SW18

£325,000

A two double bedroom flat with a private balcony giving far reaching views, and located on the fringe of Wandsworth Common.

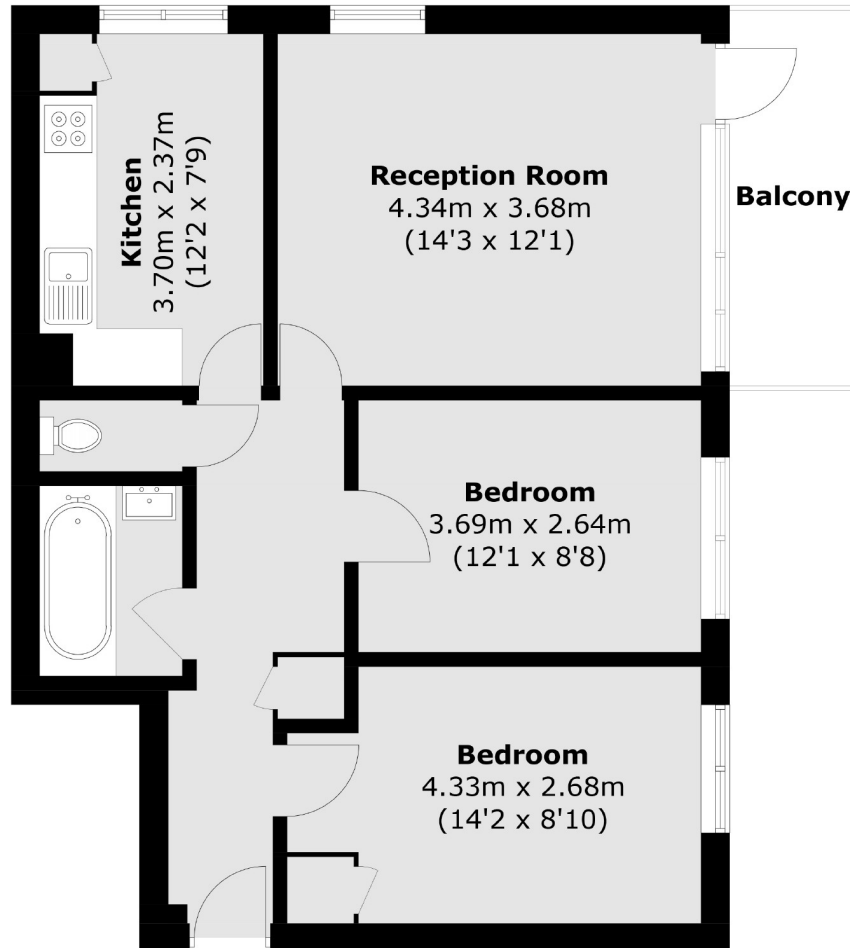
- Two Double Bedrooms
- Private Balcony
- Views across Wandsworth Common
- Sought After Location



The property comprises the hallway entrance with built-in storage, a family bathroom suite, W/C, separate kitchen breakfast room, the reception room which leads onto a private balcony with views across London. The property further benefits from residents' parking.

Gernigan House is one of a cluster of five buildings built post war on the edge of Wandsworth Common and adjacent to the historic Royal Victoria Patriotic Building. Clapham Junction railway station provides links to a multitude of destinations both in and out of town and the whole area now has an abundance of specialist shops, restaurants and bars.





Total area (approx.): 61.6 sq. m (663.1 sq. ft)
Balcony : 5.3 sq. m (57.0 sq. ft)

Jacksons Wandsworth
507 Old York Road
London
SW18 1TF
020 8875 8890
wandsworth.sales@jacksonsestateagents.com

Energy Rating: We aim to make our particulars both accurate and reliable. However they are not guaranteed; nor do they form part of an offer or contract. If you require clarification on any points then please contact us, especially if you're traveling some distance to view. Please note that appliances and heating systems have not been tested and therefore no warranties can be given as to their good working order.