



ST. ANN'S HILL, SW18

£500,000

- High specification
- One double bedroom
- Open plan living
- Close to transport
- Desirable location
- Energy rating: B



1



1



1



ABOUT THE HOME

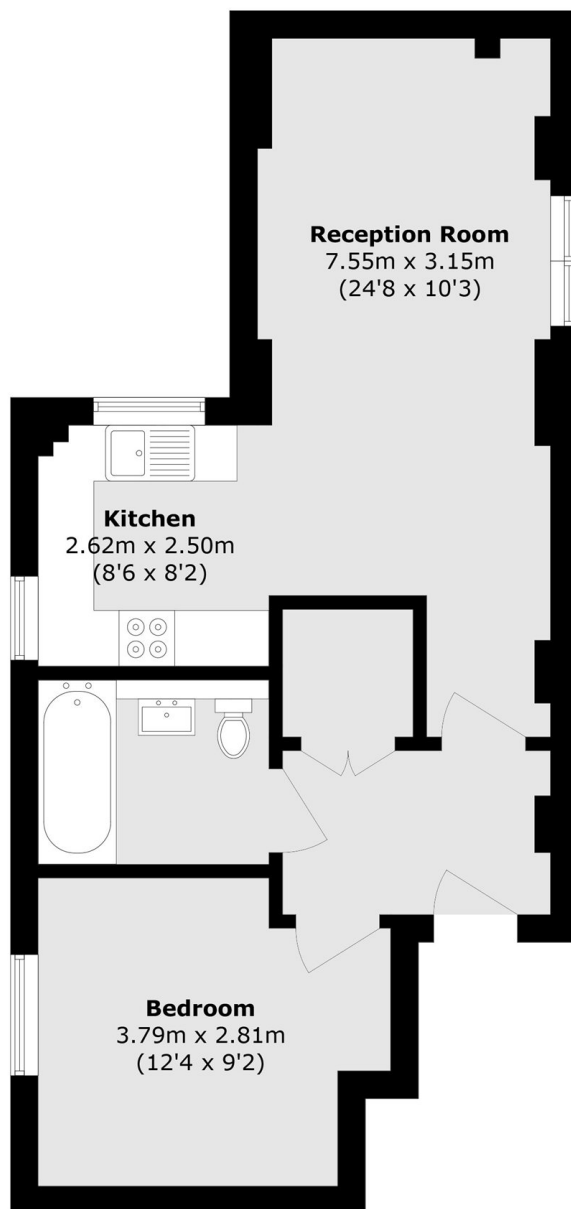
Set within a beautifully restored building is this modern and high specification one bedroom flat.

Accommodation comprises; a generous entrance hallway with built in storage space, a spacious open plan kitchen / reception room with ample room for dining, a good sized double bedroom and luxurious, modern bathroom.

St Ann's Hill is close to the open spaces of Wandsworth Common and all of the amenities of the Southside Shopping Centre: such as a Waitrose and Virgin Active Gym. There is good transport from Wandsworth Town mainline station and numerous bus services in the area. The area is also well known for its superb schools, both state and private.







Total area (approx.): 52.4 sq. m (564.0 sq. ft)

JACKSONS WANDSWORTH

507 Old York Road, London,

SW18 1TF

Sales: 020 8875 8890

Lettings: 020 8875 8899

Energy Rating: B We aim to make our particulars both accurate and reliable. However they are not guaranteed; nor do they form part of an offer or contract. If you require clarification on any points then please contact us, especially if you're traveling some distance to view. Please note that appliances and heating systems have not been tested and therefore no warranties can be given as to their good working order.