



Newton's Yard, SW18

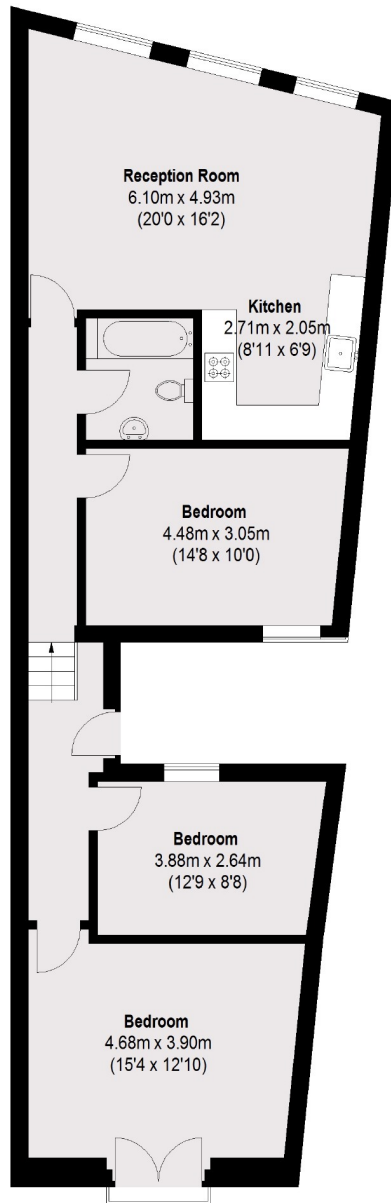
£2,400 PCM

A large, bright and spacious three double bedroom split level apartment. Ideally suited for three professional sharers.

Located nearby Wandsworth Town Southside shopping centre, with access to an array of shops, bars and restaurants. 0.6 miles to Wandsworth Town rail station.

- Three Double Bedrooms
- Split level
- Open Plan Kitchen/Reception
- Juliette Balcony

For further information on the costs associated with renting a property, please pop into our office or visit our website.



Total area (approx.): 90.34 sq. m (972 sq. ft)

Jacksons Wandsworth
507 Old York Road
London
SW18 1TF
020 8875 8899
wandsworth.lettings@jacksonsestateagents.com

Energy Rating: We aim to make our particulars both accurate and reliable. However they are not guaranteed; nor do they form part of an offer or contract. If you require clarification on any points then please contact us, especially if you're traveling some distance to view. Please note that appliances and heating systems have not been tested and therefore no warranties can be given as to their good working order.