



JUNIPER DRIVE, SW18

£600,000

- Private balcony
- Open plan living
- Modern apartment
- Popular location
- No onward chain
- Energy rating: C



2



1



1



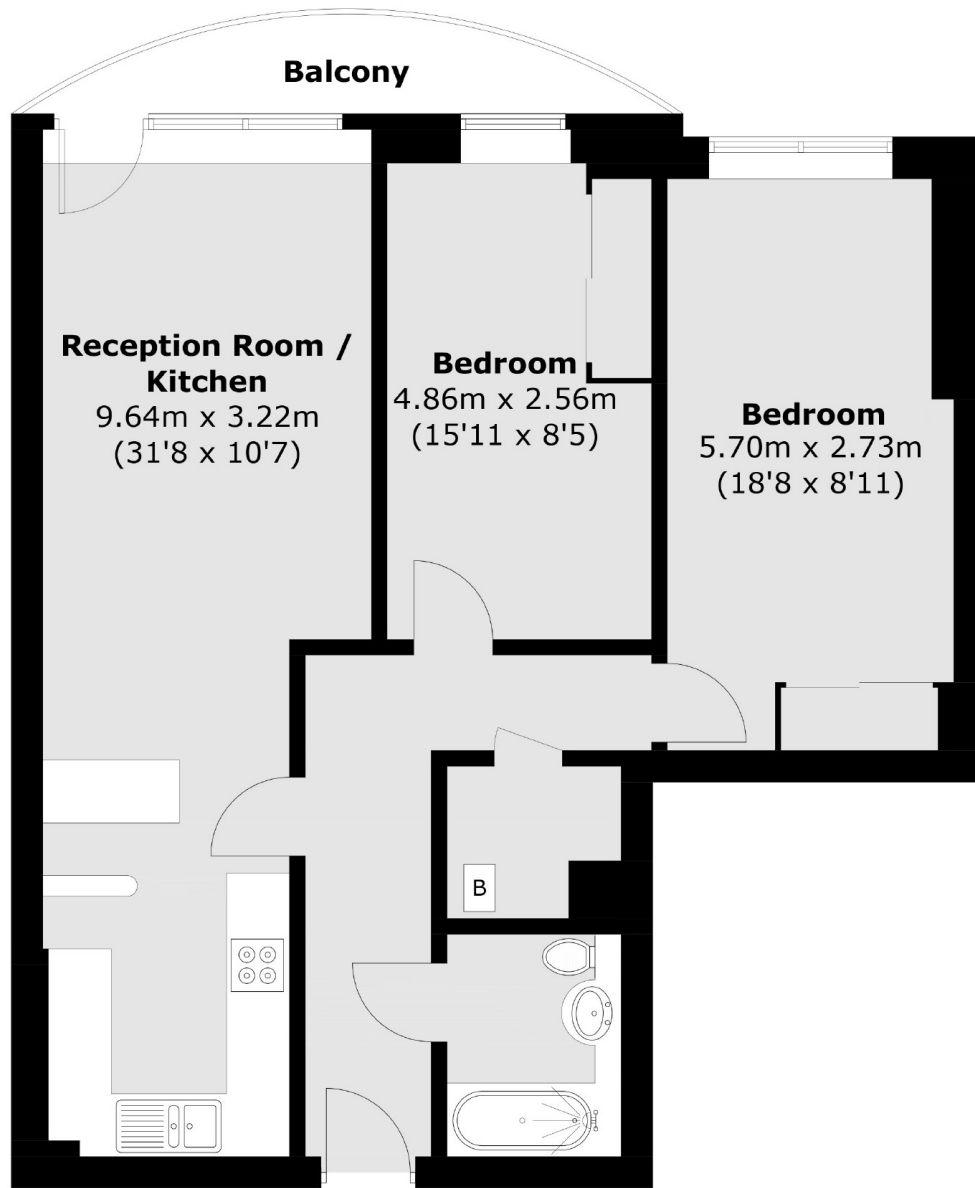
ABOUT THE HOME

This property offers a spacious open plan kitchen / living room with access to a private, sunny balcony. There are two good sized bedrooms, both with floor to ceiling windows allowing ample natural light to flood the space. This property is offered to the market chain free.

Battersea Reach is a desirable riverside development which is ideally positioned for easy access to Central London via Wandsworth Town Station and Clapham Junction. Whilst being a short distance from the popular shops, bars and restaurants of Wandsworth Town and Northcote Road, it is also just across the bridge from Fulham. The Riverbus stop at Plantation Wharf offers a fast and convenient commute into the City and out to Canary Wharf.







First Floor

Total area (approx.): 71.3 sq. m (767.5 sq. ft)
Balcony: 4.0 sq. m (43.1 sq. ft)

JACKSONS WANDSWORTH

507 Old York Road, London,
SW18 1TF
Sales: 020 8875 8890
Lettings: 020 8875 8899

Energy Rating: C We aim to make our particulars both accurate and reliable. However they are not guaranteed; nor do they form part of an offer or contract. If you require clarification on any points then please contact us, especially if you're traveling some distance to view. Please note that appliances and heating systems have not been tested and therefore no warranties can be given as to their good working order.