



## DRAPERS YARD, SW18

£850,000

- Modern Apartment Complex
- Three Double Bedrooms
- Chain Free
- 1,116 sqft
- Private Terrace
- Energy rating: B







## ABOUT THE HOME

A beautifully presented, three bedroom, two bathroom modern apartment offering generous and luxurious accommodation as well as a private terrace. Parking is available by separate negotiation.

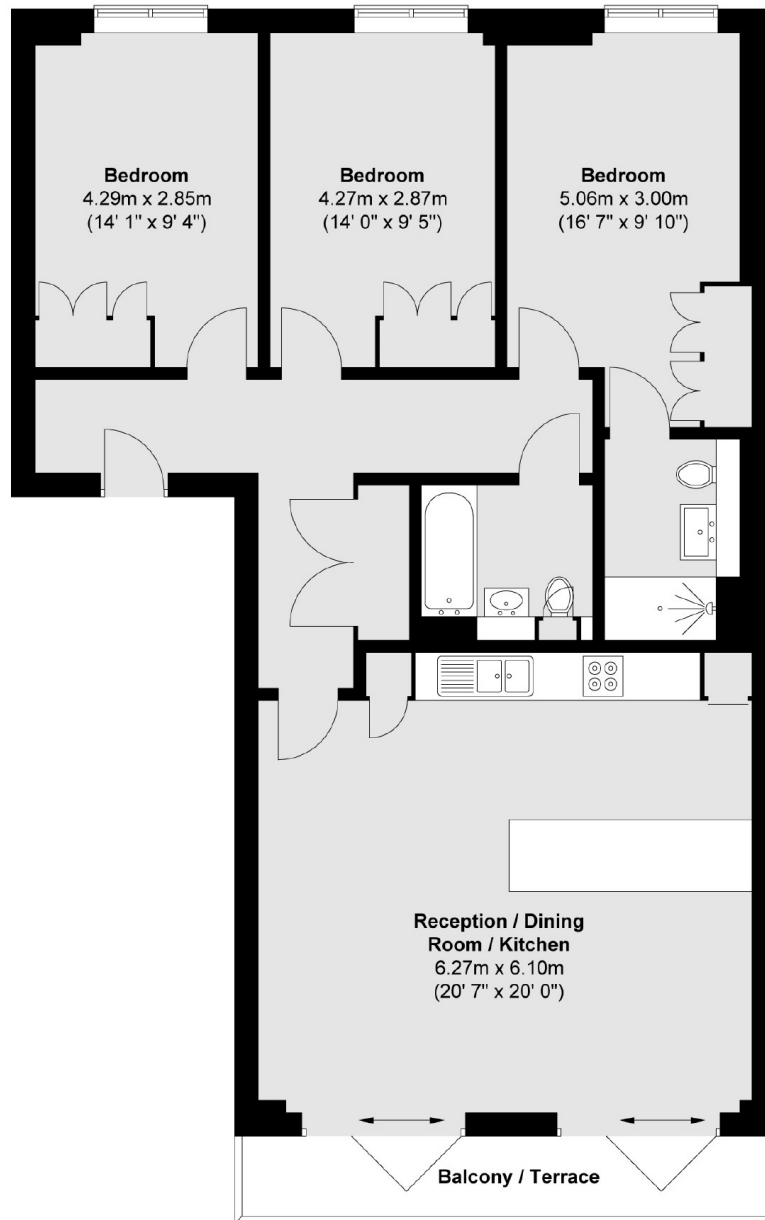
Accommodation comprises; spacious hallway with useful large storage cupboard, wonderfully presented kitchen open plan to the impressive reception and dining areas, great family bathroom, generous second and third bedrooms both boasting built in wardrobes, large principle bedroom also benefiting from built in wardrobes and a lovely en suite bathroom. The property benefits from a large, private terrace which is accessed via the reception room. The development also offers well maintained communal gardens and a 24 hour concierge service.

Gowing House is located just a stones throw from Wandsworth Town station. The development is located for ease of access to central London as well as providing a range of restaurants, cafes and the newly extended Southside Shopping Centre opposite.









Total area (approx.) : 103.7 sq. m (1116 sq. ft)  
 Total balcony / terrace area (approx.) : 6.5 sq. m (70 sq. ft)

#### JACKSONS EARLSFIELD

372-374 Garratt Lane,  
 Earlsfield, London, SW18 4ES  
 Sales: 020 8971 7979  
 Lettings: 020 8971 7070

Energy Rating: We aim to make our particulars both accurate and reliable. However they are not guaranteed; nor do they form part of an offer or contract. If you require clarification on any points then please contact us, especially if you're traveling some distance to view. Please note that appliances and heating systems have not been tested and therefore no warranties can be given as to their good working order.