



ST. JOHN'S HILL GROVE, SW11

£1,995,000

- Highly Sought After Location
- Four Double Bedrooms
- Off Street Parking
- No Onward Chain
- Landscaped South Facing Garden
- Energy rating: D





ABOUT THE HOME

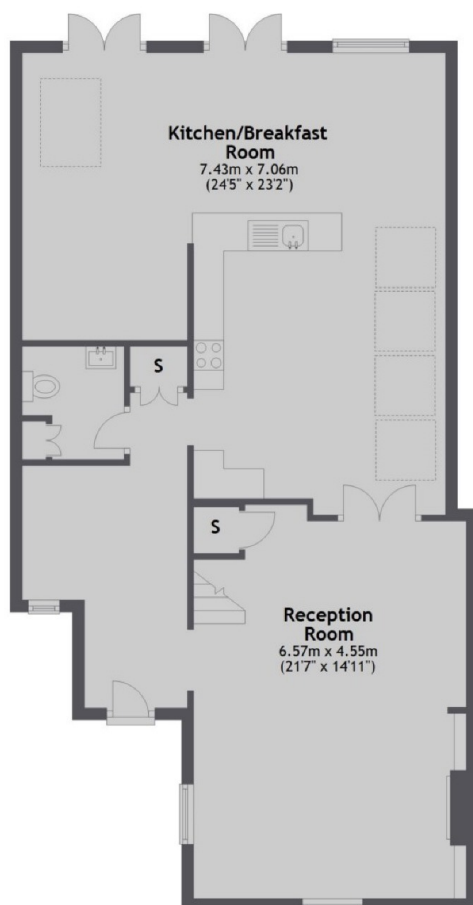
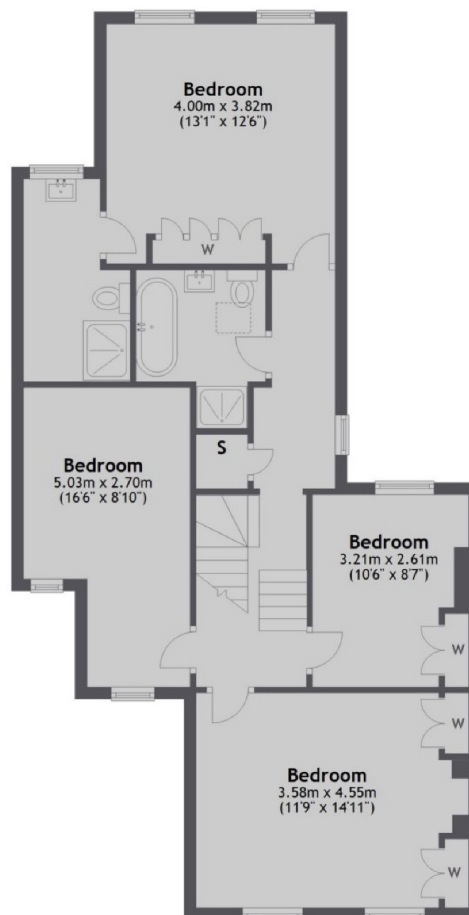
A substantial, four bedroom, period house offering an abundance of character, charm, and versatile living space.

Situated on the highly sought-after St. John's Hill Grove this characterful home comprises; a grand entrance hall with a utility cupboard and WC, double reception room benefitting from an abundance of natural light, a separate kitchen which is open plan to a large dining/ breakfast room, perfect for entertaining. The property also boasts a generous, beautifully landscaped, south facing garden. Upstairs, you'll find three spacious bedrooms, a family bathroom and a fourth, principle, bedroom boasting a well appointed en suite bathroom, making this an excellent choice for families or those seeking lateral living space.

Conveniently located just a stones throw from Clapham Junction and the vibrant Northcote Road, this home enjoys excellent transport links and ease of access to a variety of trendy coffee shops, boutique stores, bars and restaurants offering the perfect balance for modern living.





Ground Floor

First Floor


Total area: approx. 166.2 sq. metres (1788.6 sq. feet)

JACKSONS WANDSWORTH

507 Old York Road, London,
SW18 1TF
Sales: 020 8875 8890
Lettings: 020 8875 8899

Energy Rating: We aim to make our particulars both accurate and reliable. However they are not guaranteed; nor do they form part of an offer or contract. If you require clarification on any points then please contact us, especially if you're traveling some distance to view. Please note that appliances and heating systems have not been tested and therefore no warranties can be given as to their good working order.